

5669D6

094-221-000-0011
2.2100 AC.

RES B

RES B

RES A

094-221-000-0009
2.4400 AC.

Harris County Appraisal District



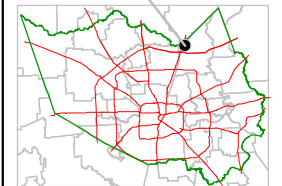
0 100 200

PUBLICATION DATE:
10/1/2011

Geospatial or map data maintained by the Harris County Appraisal District is for informational purposes and may not have been prepared for or be suitable for legal, engineering, or surveying purposes. It does not represent an on-the-ground survey and only represents the approximate location of property boundaries.



MAP LOCATION



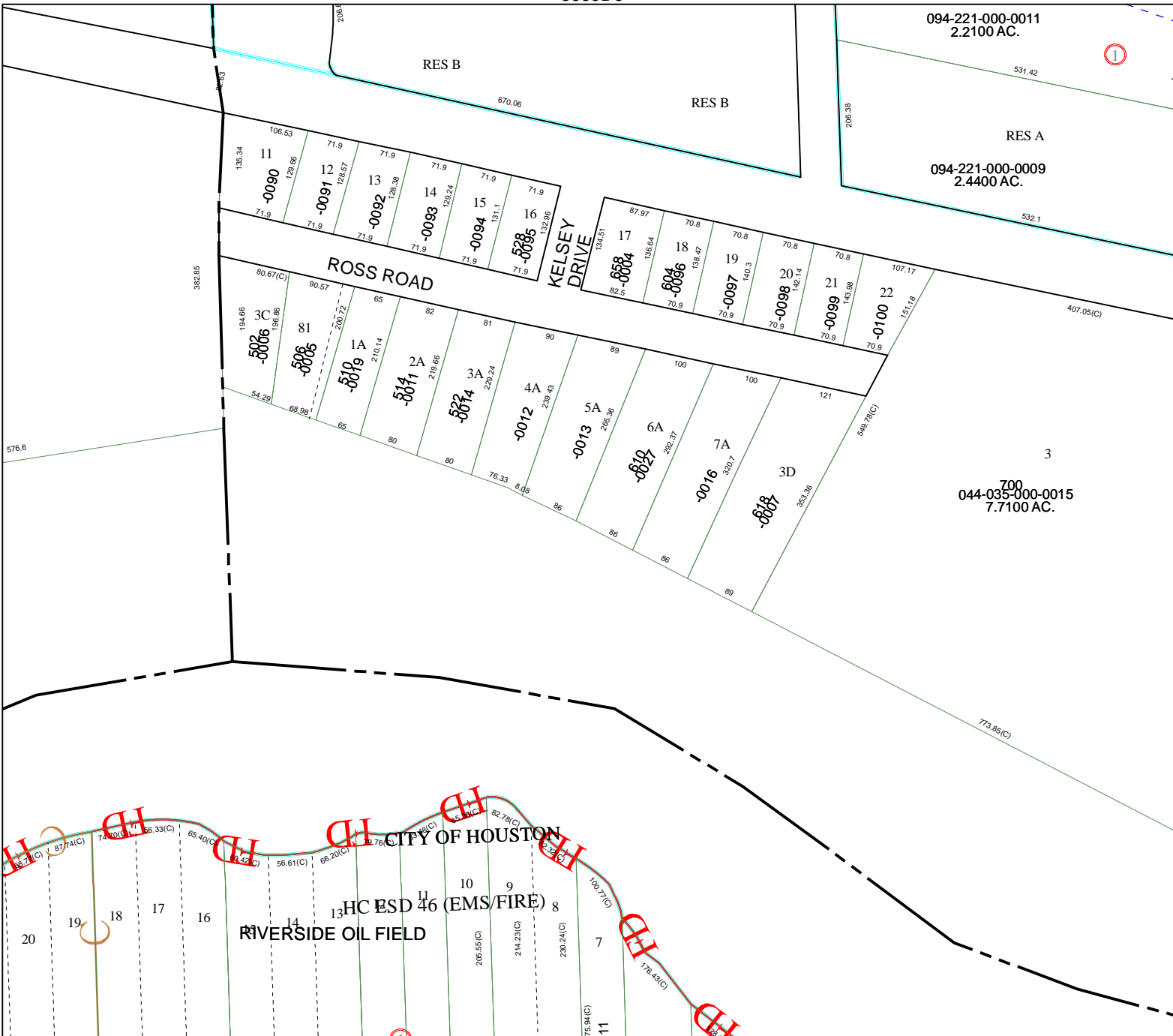
FACET 5669D

1	2	3	4
5	6	7	8
9	10	11	12

5669D9

5669D11

700
044-035-000-0015
7.7100 AC.



5668B2

CITY OF HOUSTON
HC ESD 46 (EMS/FIRE)
RIVERSIDE OIL FIELD