

Harris County Appraisal District

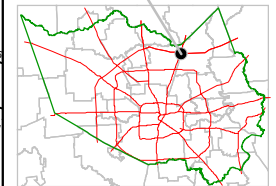


0 100 200

PUBLICATION DATE:
12/29/2011

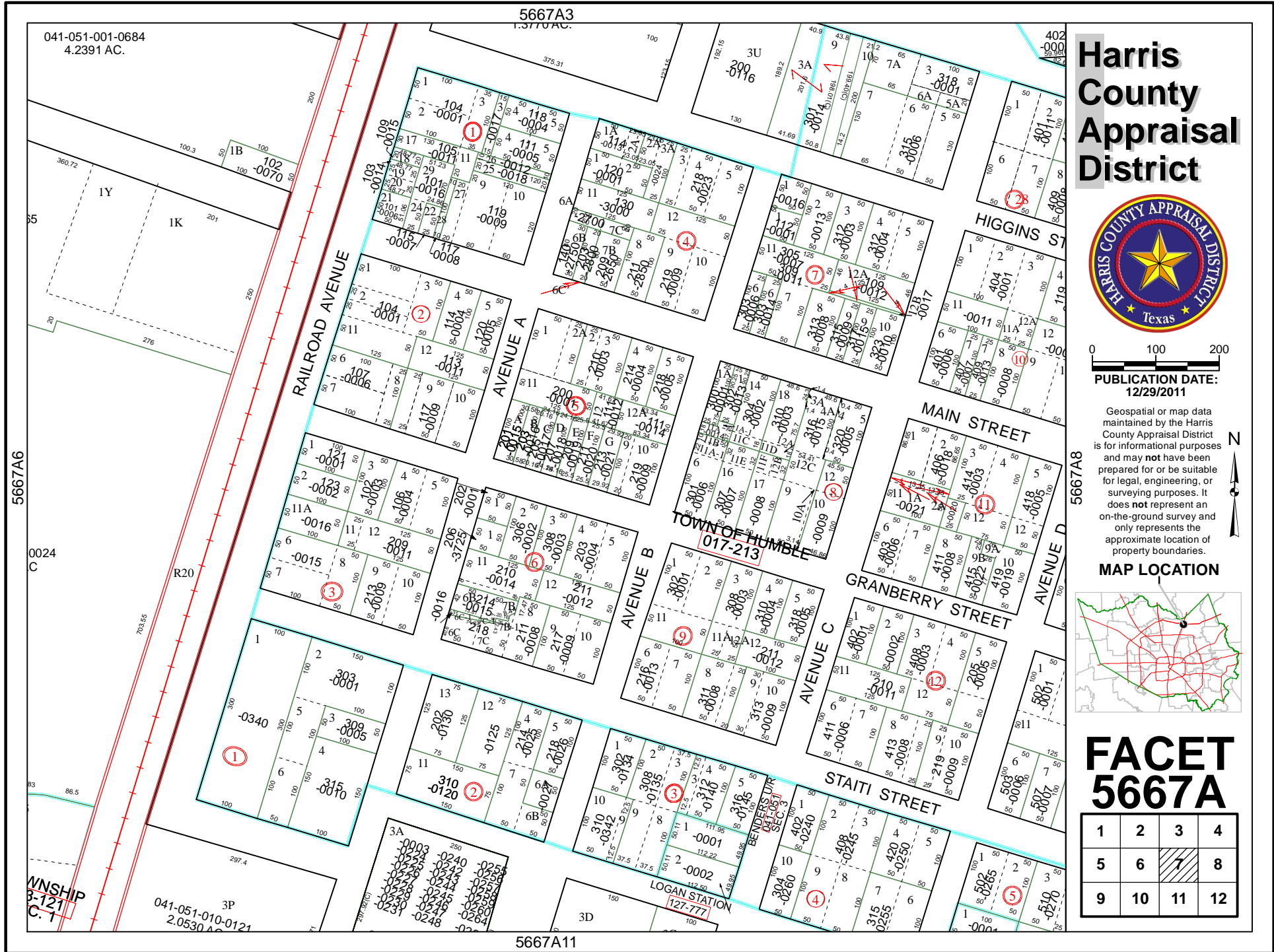
Geospatial or map data maintained by the Harris County Appraisal District is for informational purposes and may not have been prepared for or be suitable for legal, engineering, or surveying purposes. It does not represent an on-the-ground survey and only represents the approximate location of property boundaries.

MAP LOCATION



FACET 5667A

1	2	3	4
5	6	7	8
9	10	11	12



5667A3

5667A11

041-051-001-0684
4.2391 AC.

041-051-010-0121
2.0530 AC

5667A6

5667A8

0024

R20

WNSHIP
B-121
C-1

LOGAN STATION
[127-777]

TOWN OF HUMBLE
017-213

BENDERS LUR
041-051-101
SEC. 3

