

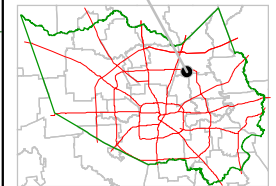
Harris County Appraisal District



0 100 200
 PUBLICATION DATE:
 12/13/2011

Geospatial or map data maintained by the Harris County Appraisal District is for informational purposes and may not have been prepared for or be suitable for legal, engineering, or surveying purposes. It does not represent an on-the-ground survey and only represents the approximate location of property boundaries.

MAP LOCATION



FACET 5664B

1	2	3	4
5	6	7	8
9	10	11	12

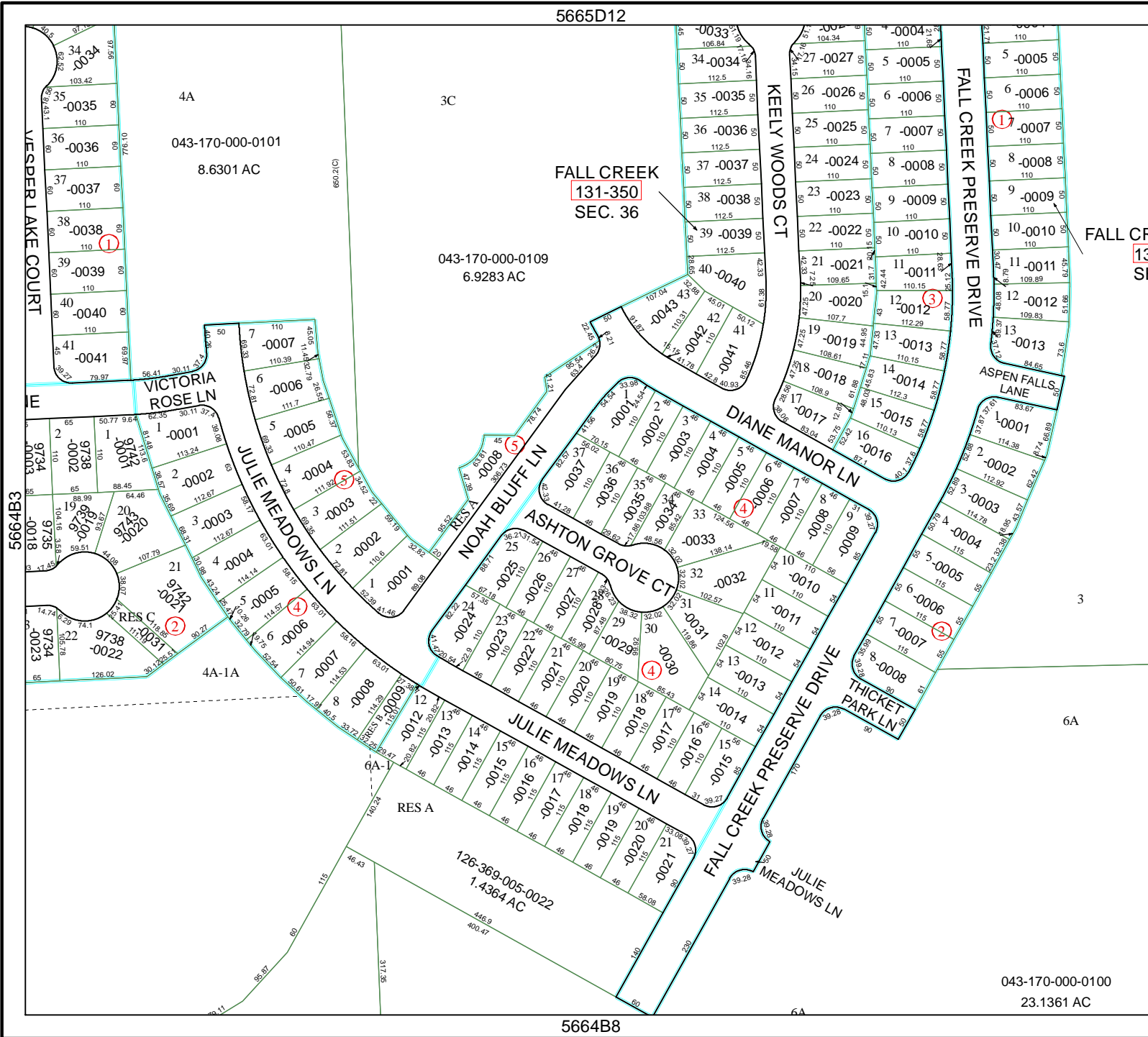
5665D12

FALL CREEK
 131-350
 SEC. 36

043-170-000-0109
 6.9283 AC

043-170-000-0100
 23.1361 AC

5664B8



5764A1

