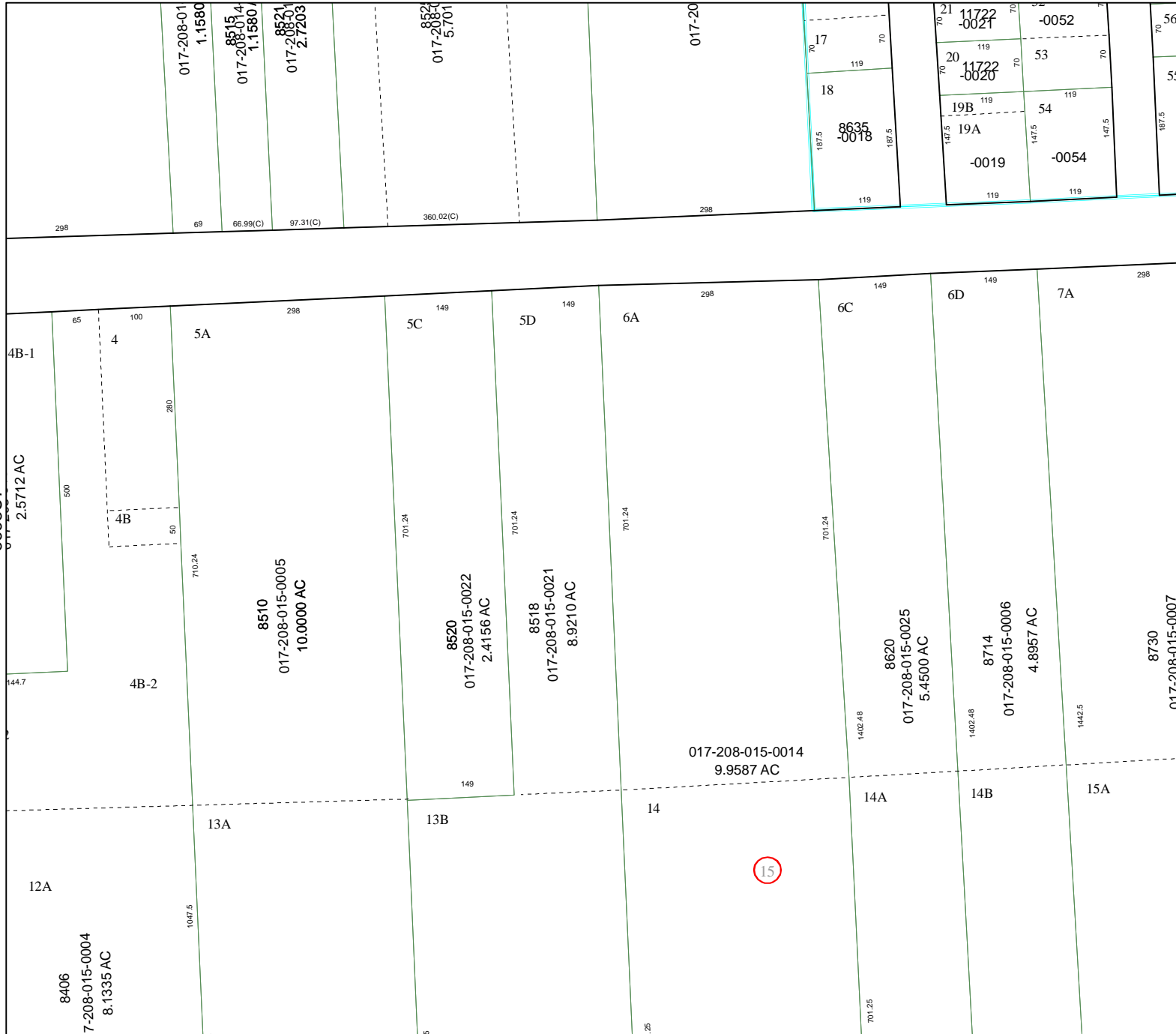
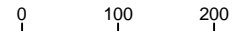


5663C4



5663C12

Harris County Appraisal District

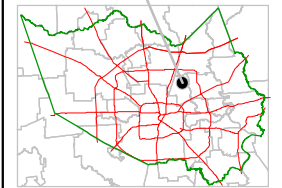


PUBLICATION DATE:
8/15/2011

Geospatial or map data maintained by the Harris County Appraisal District is for informational purposes and may **not** be suitable for legal, engineering, or surveying purposes. It does **not** represent an on-the-ground survey and only represents the approximate location of property boundaries.



MAP LOCATION



FACET 5663C

1	2	3	4
5	6	7	8
9	10	11	12

5663D5

8730

017-208-015-0007

1442.5

1442.5

4.8957 AC

8714

017-208-015-0006

1402.48

8620

017-208-015-0025

5.4500 AC

1402.48

1402.48

9.9587 AC

15

017-208-015-0014

14

14A

14B

15A

13B

13A

12A

1047.5

8510

017-208-015-0005

10.0000 AC

710.24

710.24

60

280

144.7

8406

7-208-015-0004

8.1335 AC

2.5712 AC

4B-1

4

5A

5C

5D

6A

6C

6D

7A

4B-2

4

5A

5C

5D

6A

6C

6D

7A

13A

13B

14

14A

14B

15A

12A

1047.5

8510

017-208-015-0005

10.0000 AC

710.24

710.24

60

280

144.7

8406

7-208-015-0004

8.1335 AC

2.5712 AC

4B-1

4

5A

5C

5D

6A

6C

6D

7A

4B-2

4

5A

5C

5D

6A

6C

6D

7A

13A

13B

14

14A

14B

15A

12A

1047.5

8510

017-208-015-0005

10.0000 AC

710.24

710.24

60

280

144.7

8406

7-208-015-0004

8.1335 AC

2.5712 AC

4B-1

4

5A

5C

5D

6A

6C

6D

7A

4B-2

4

5A

5C

5D

6A

6C

6D

7A

13A

13B

14

14A

14B

15A

12A

1047.5

8510

017-208-015-0005

10.0000 AC

710.24

710.24

60

280

144.7

8406

7-208-015-0004

8.1335 AC

2.5712 AC

4B-1

4

5A

5C

5D

6A

6C

6D

7A

4B-2

4

5A

5C

5D

6A

6C

6D

7A

13A

13B

14

14A

14B

15A

12A

1047.5

8510

017-208-015-0005

10.0000 AC

710.24

710.24

60

280

144.7

8406

7-208-015-0004

8.1335 AC

2.5712 AC

4B-1

4

5A

5C

5D

6A

6C

6D

7A

4B-2

4

5A

5C

5D

6A

6C

6D

7A

13A

13B

14

14A

14B

15A

12A

1047.5

8510

017-208-015-0005

10.0000 AC

710.24

710.24

60

280

144.7

8406

7-208-015-0004

8.1335 AC

2.5712 AC

4B-1

4

5A

5C

5D

6A

6C

6D

7A

4B-2

4

5A

5C

5D

6A

6C

6D

7A

13A

13B

14

14A

14B

15A

12A

1047.5

8510

017-208-015-0005

10.0000 AC

710.24

710.24

60

280

144.7

8406

7-208-015-0004

8.1335 AC

2.5712 AC

4B-1

4

5A

5C

5D

6A

6C

6D

7A

4B-2

4

5A

5C

5D

6A

6C

6D

7A

13A

13B

14

14A

14B

15A

12A

1047.5

8510

017-208-015-0005

10.0000 AC

710.24

710.24

60

280

144.7

8406

7-208-015-0004

8.1335 AC