

5663B7

WINFIELD AVENUE

5663B10

FOREST ACRES ROAD

DYERSDALE DRIVE

5663D3

Harris County Appraisal District

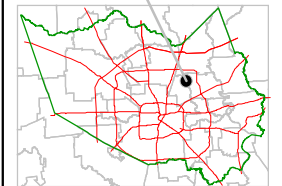


0 100 200

PUBLICATION DATE:
8/15/2011

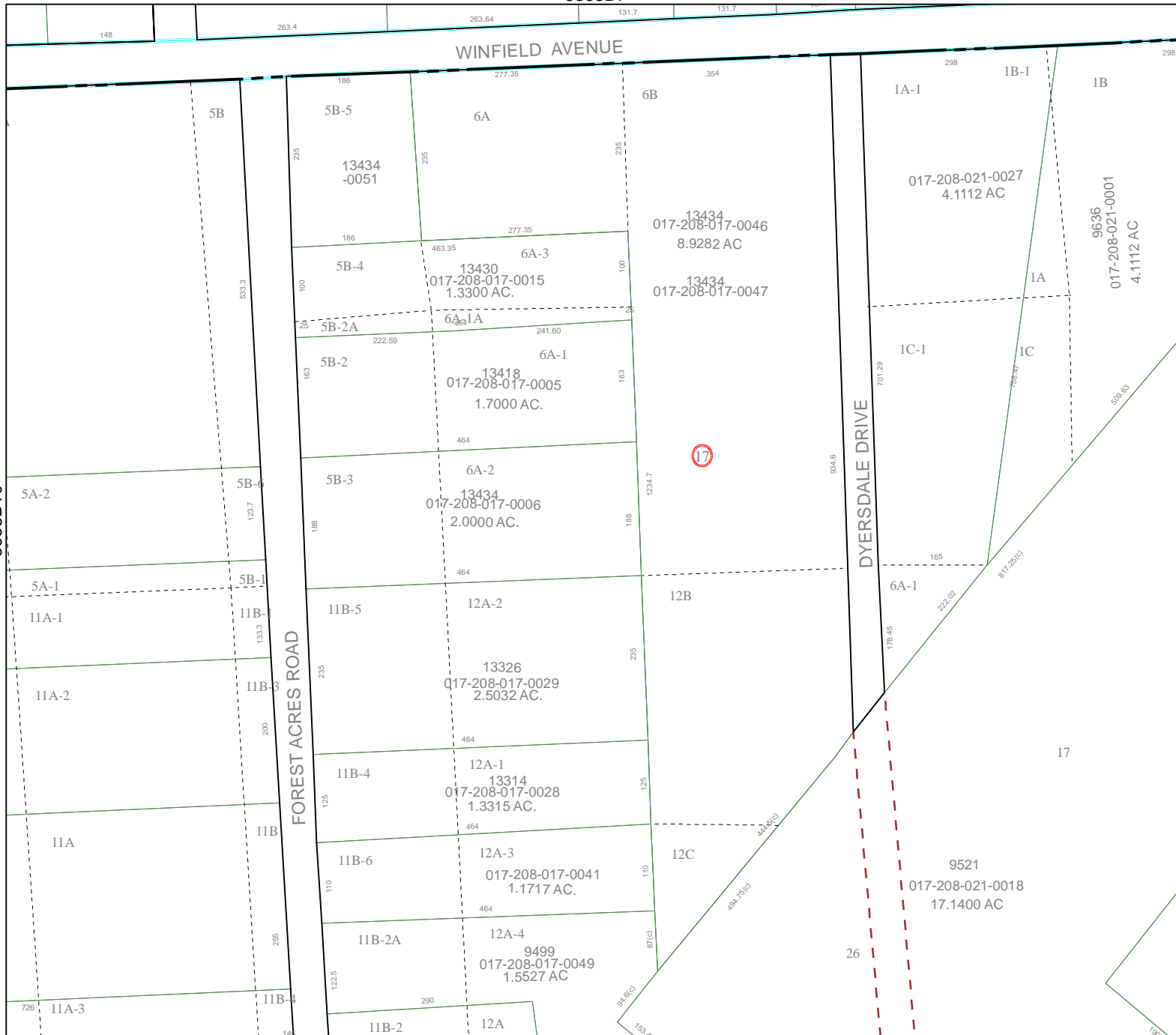
Geospatial or map data maintained by the Harris County Appraisal District is for informational purposes and may not have been prepared for or be suitable for legal, engineering, or surveying purposes. It does not represent an on-the-ground survey and only represents the approximate location of property boundaries.

MAP LOCATION



FACET 5663B

1	2	3	4
5	6	7	8
9	10	11	12



17

