

5660A12

HARDING R C  
051-385

# Harris County Appraisal District



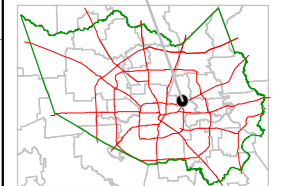
0 100 200

PUBLICATION DATE:  
8/15/2011

Geospatial or map data maintained by the Harris County Appraisal District is for informational purposes and may not have been prepared for or be suitable for legal, engineering, or surveying purposes. It does not represent an on-the-ground survey and only represents the approximate location of property boundaries.



## MAP LOCATION

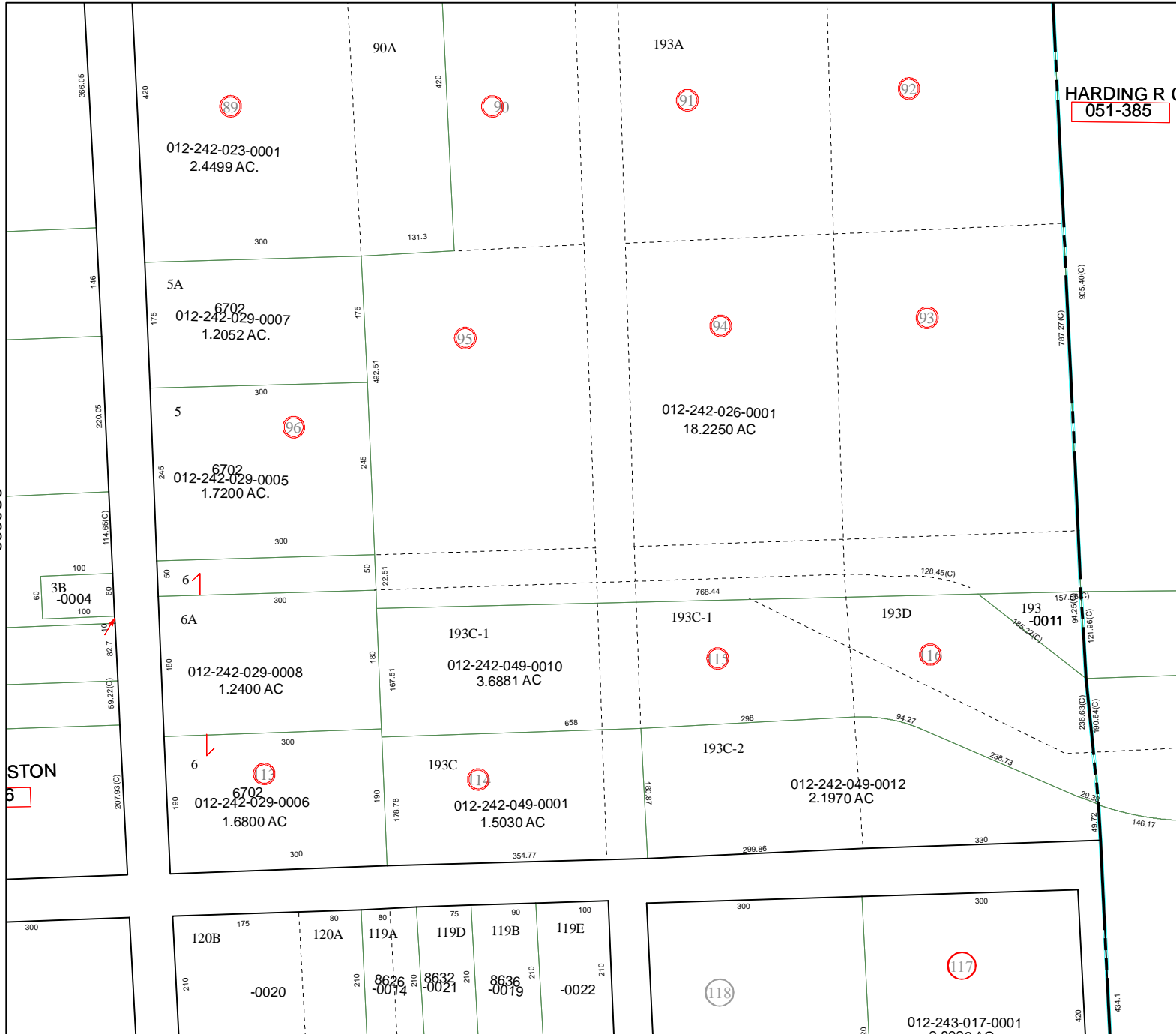


# FACET 5660C

1	2	3	4
5	6	7	8
9	10	11	12

5660C3

5660D1



5660C8