

5658D1

5658C8

# Harris County Appraisal District



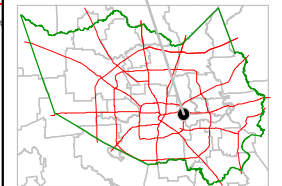
0 100 200

PUBLICATION DATE:  
8/15/2011

Geospatial or map data maintained by the Harris County Appraisal District is for informational purposes and may **not** have been prepared for or be suitable for legal, engineering, or surveying purposes. It does **not** represent an on-the-ground survey and only represents the approximate location of property boundaries.



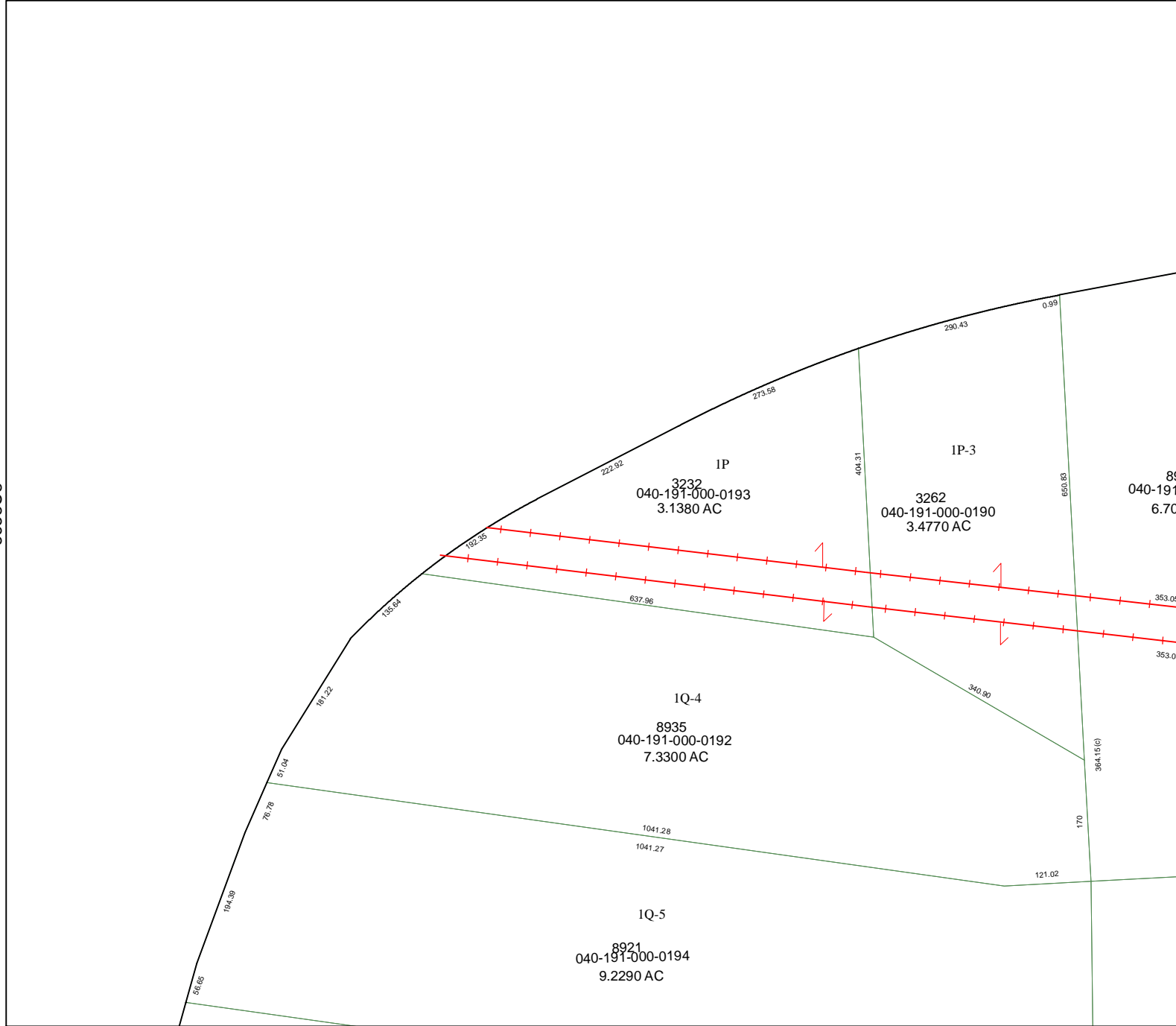
### MAP LOCATION



## FACET 5658D

1	2	3	4
5	6	7	8
9	10	11	12

5658D9



5658D6

89

040-191

6.70

353.0

353.0

364.15(c)

170

121.02

340.90

637.96

192.35

404.31

650.83

290.43

0.99

273.58

222.92

155.64

181.22

51.04

70.78

194.39

56.65