

5655B3

1427.91

948

14

040-198-000-0013

11F

Harris County Appraisal District



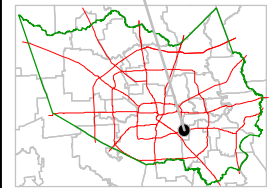
0 100 200

PUBLICATION DATE:
8/15/2011

Geospatial or map data maintained by the Harris County Appraisal District is for informational purposes and may **not** have been prepared for or be suitable for legal, engineering, or surveying purposes. It does **not** represent an on-the-ground survey and only represents the approximate location of property boundaries.



MAP LOCATION



FACET 5655B

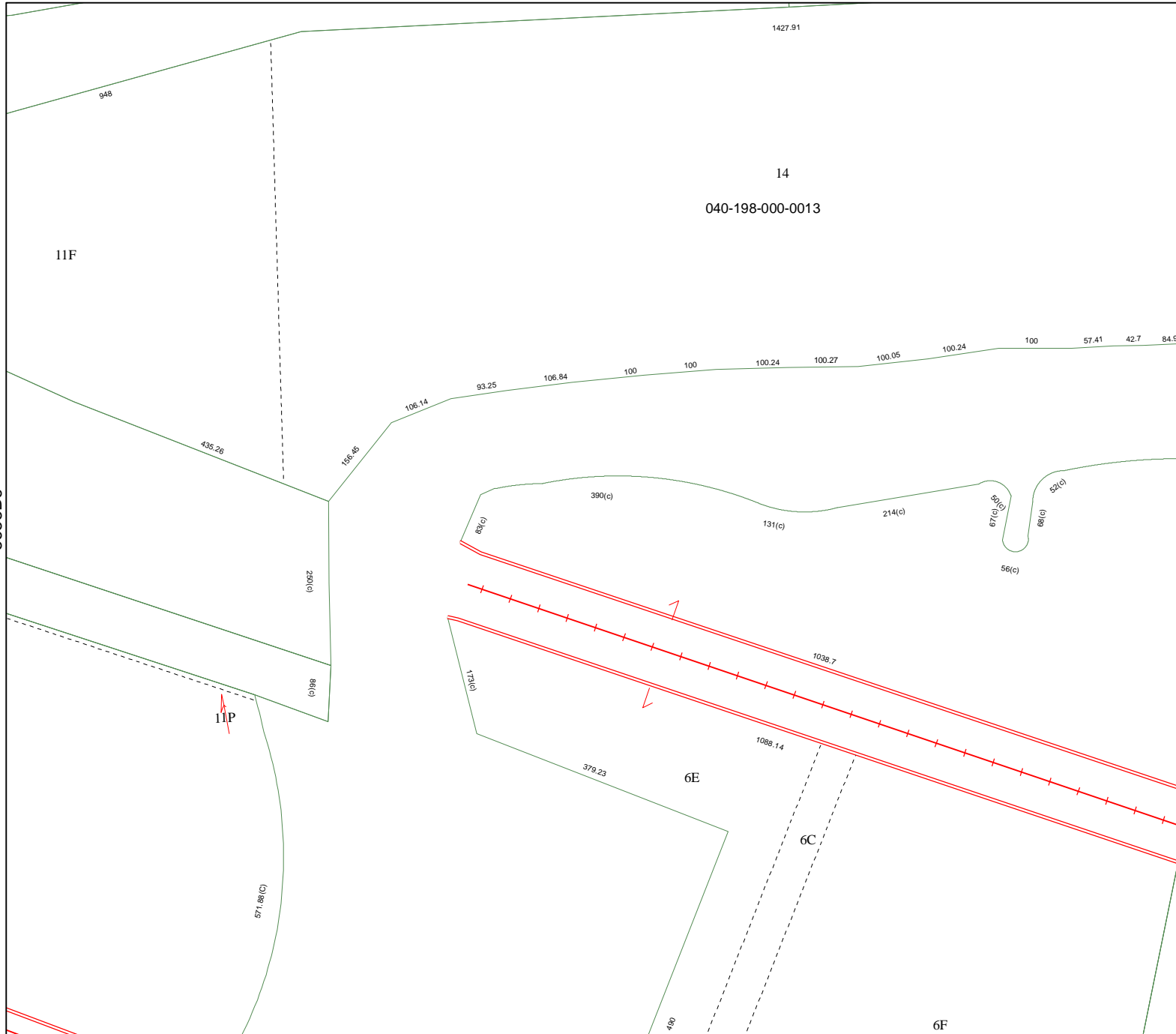
1	2	3	4
5	6	7	8
9	10	11	12

5655B11

6F

5655B6

5655B8



11P

6E

6C

571.88(C)

379.23

1088.14

1038.7

1731(C)

390(C)

131(C)

214(C)

50(C)

67(C)

66(C)

52(C)

56(C)

250(C)

188(C)

435.26

158.85

106.14

93.25

106.84

100

100

100.24

100.27

100.05

100.24

100

57.41

42.7

84.94