

Harris County Appraisal District

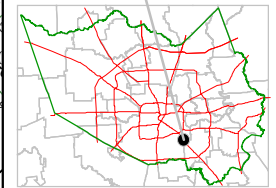


0 100 200

PUBLICATION DATE:
8/15/2011

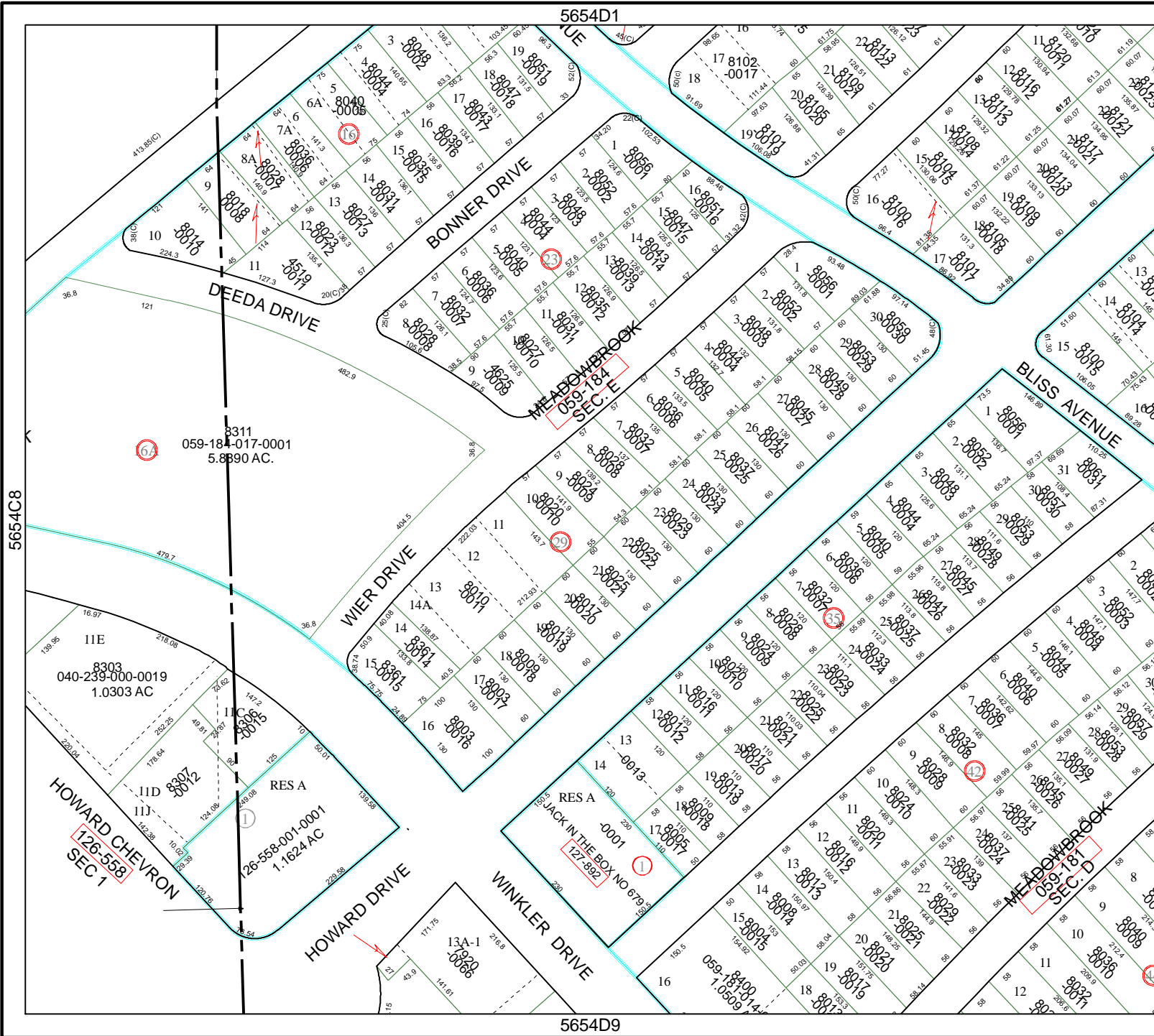
Geospatial or map data maintained by the Harris County Appraisal District is for informational purposes and may not have been prepared for or be suitable for legal, engineering, or surveying purposes. It does not represent an on-the-ground survey and only represents the approximate location of property boundaries.

MAP LOCATION



FACET 5654D

1	2	3	4
5	6	7	8
9	10	11	12



5654D1

5654D9

5654C8

5654D6

3311
059-184-017-0001
5.8890 AC.

8303
040-239-000-0019
1.0303 AC

RES A
126-558-001-0001
1.1624 AC

RES A
127-892-0001
059-184-014-0001
127-892

HOWARD CHEVRON
126-558
SEC 1

MEADOWBROOK
126-558
SEC 1