

Harris County Appraisal District

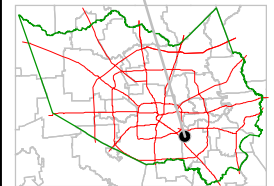


0 100 200

PUBLICATION DATE:
12/29/2011

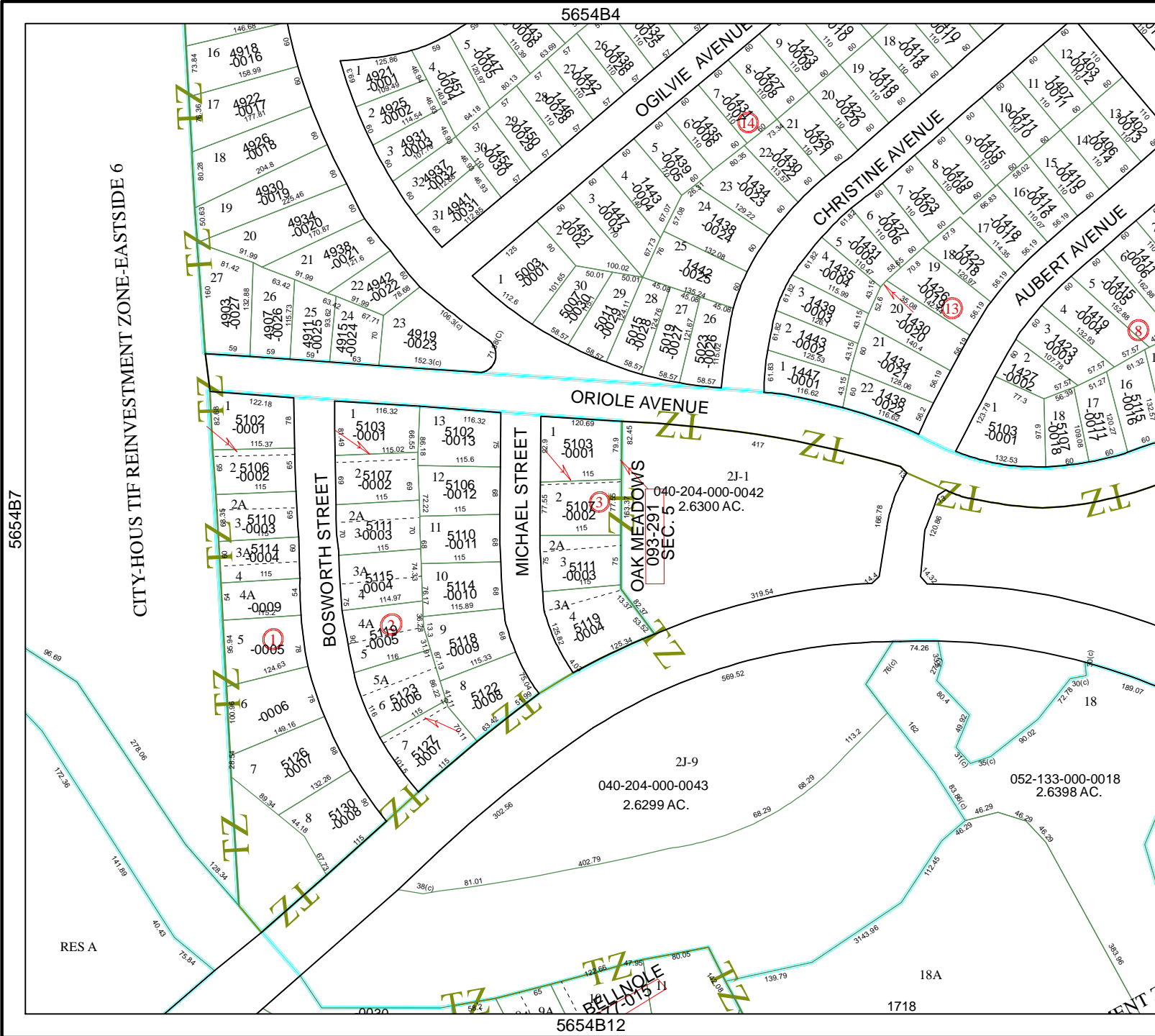
Geospatial or map data maintained by the Harris County Appraisal District is for informational purposes and may not have been prepared for or be suitable for legal, engineering, or surveying purposes. It does not represent an on-the-ground survey and only represents the approximate location of property boundaries.

MAP LOCATION



FACET 5654B

| | | | |
|---|----|----|----|
| 1 | 2 | 3 | 4 |
| 5 | 6 | 7 | 8 |
| 9 | 10 | 11 | 12 |



5654B7

5754A5

5654B4

5654B12

040-204-000-0042
2.6300 AC.

040-204-000-0043
2.6299 AC.

052-133-000-0018
2.6398 AC.

RES A

18A

1718

BELLNOLE
567-015