

5653B10

139.8	8017	139.8
8814	8821	8822
80	80	80
25	25	75
139.8	139.8	139.8

21	80	22	80	23	100
8614	8621	8622	8623	8624	8625
80	80	80	80	80	98
139.8	139.8	139.8	139.8	139.8	139.8

392.65(C)	392.65(C)
-----------	-----------

392.65(C)	392.65(C)
-----------	-----------

392.65(C)	392.65(C)
-----------	-----------

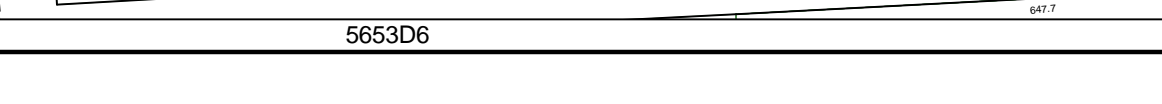
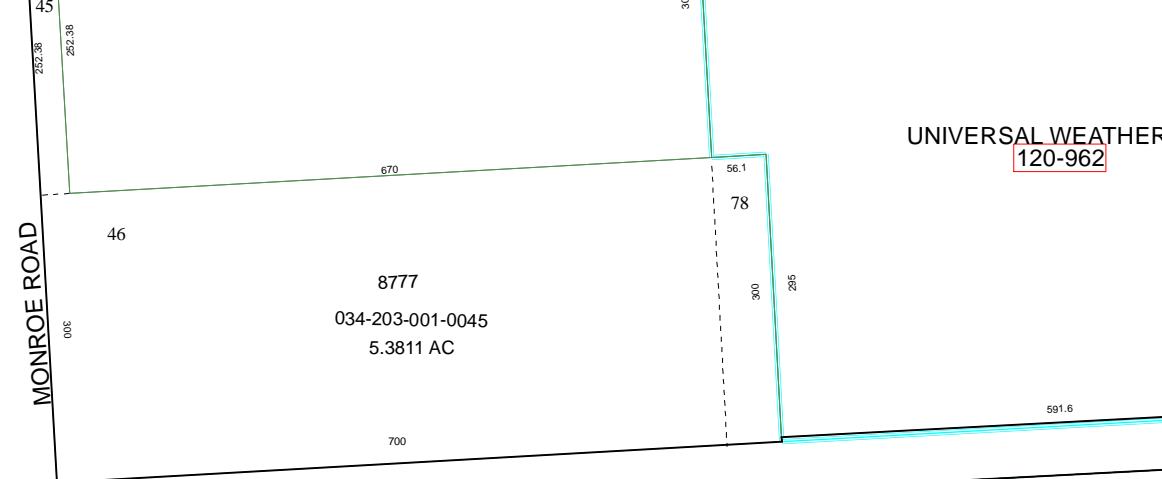
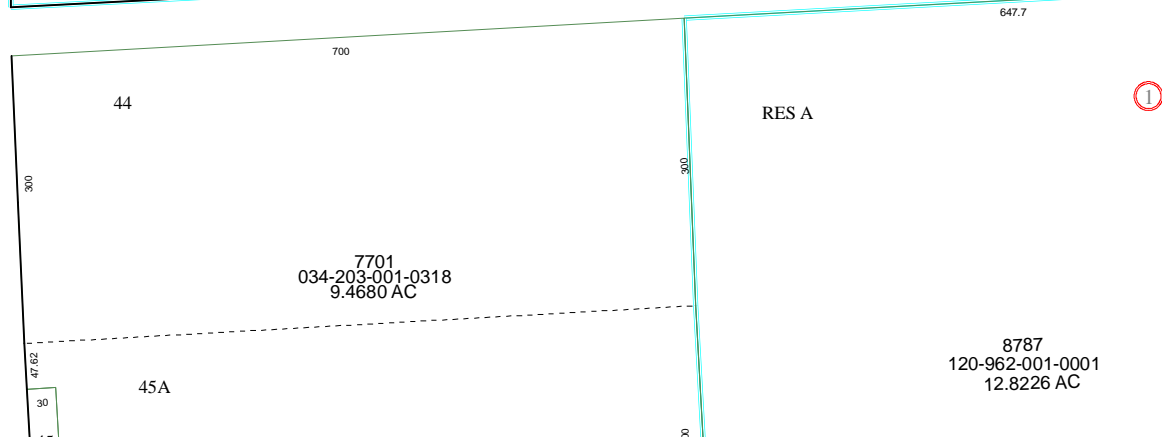
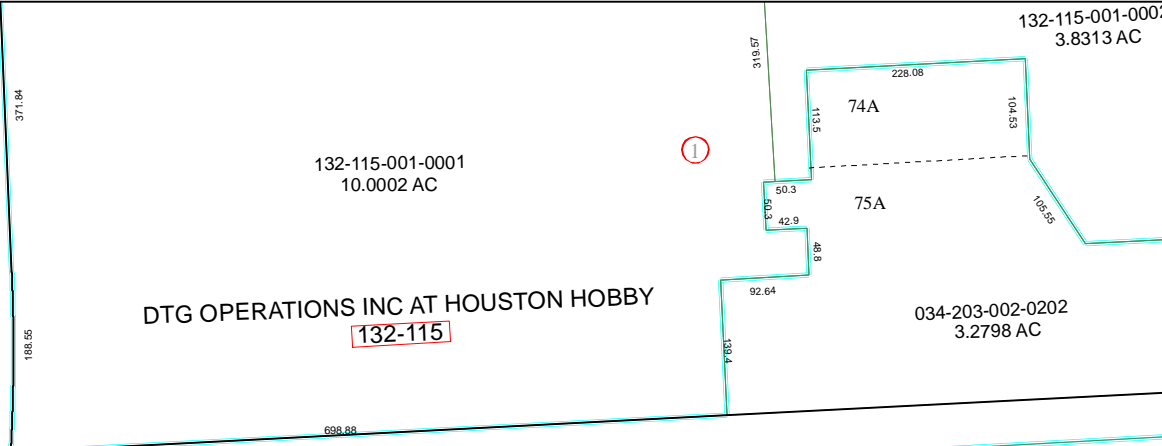
392.65(C)	392.65(C)
-----------	-----------

392.65(C)	392.65(C)
-----------	-----------

392.65(C)	392.65(C)
-----------	-----------

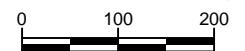
392.65(C)	392.65(C)
-----------	-----------

392.65(C)	392.65(C)
-----------	-----------



5653D6

Harris County Appraisal District

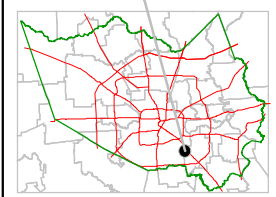


PUBLICATION DATE:
8/15/2011

Geospatial or map data maintained by the Harris County Appraisal District is for informational purposes and may not have been prepared for or be suitable for legal, engineering, or surveying purposes. It does not represent an on-the-ground survey and only represents the approximate location of property boundaries.



MAP LOCATION



FACET 5653D

1	2	3	4
5	6	7	8
9	10	11	12

5653D1

5653D3