

5569C6

041-096-001-1030
15.8200 AC

SD 11 (EMS)

Harris County Appraisal District

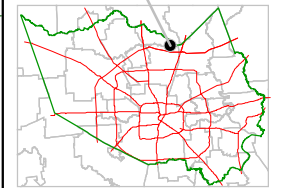


0 100 200
PUBLICATION DATE:
1/25/2012

Geospatial or map data maintained by the Harris County Appraisal District is for informational purposes and may not have been prepared for or be suitable for legal, engineering, or surveying purposes. It does not represent an on-the-ground survey and only represents the approximate location of property boundaries.



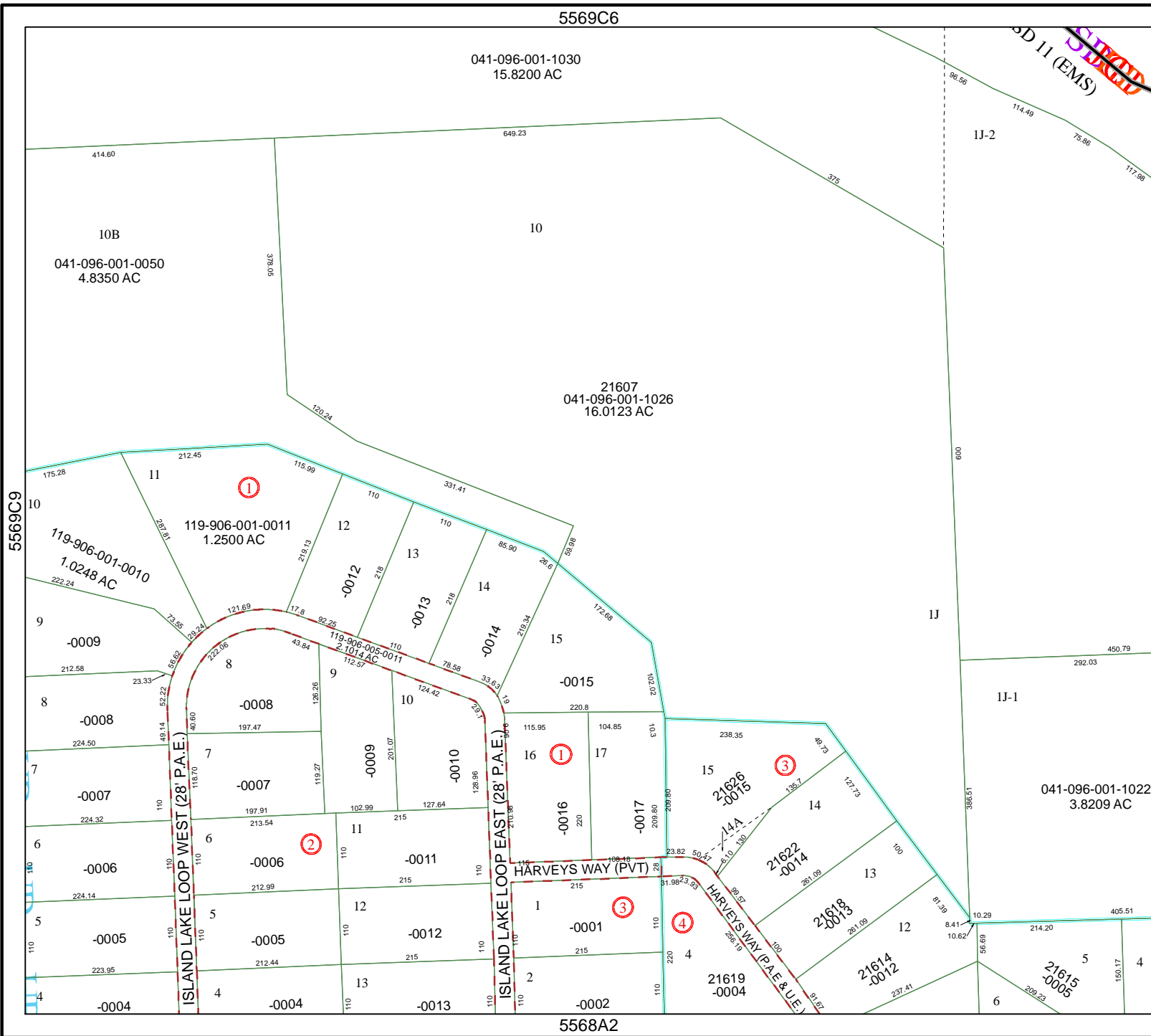
MAP LOCATION



FACET 5569C

1	2	3	4
5	6	7	8
9	10	11	12

5568A2



5569C9

5569C11