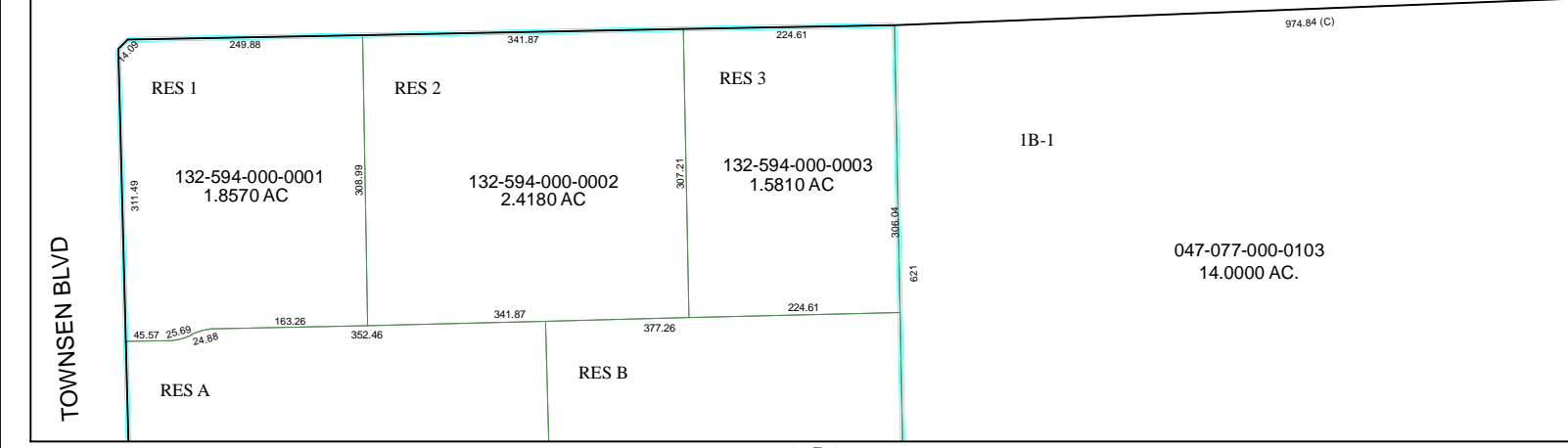
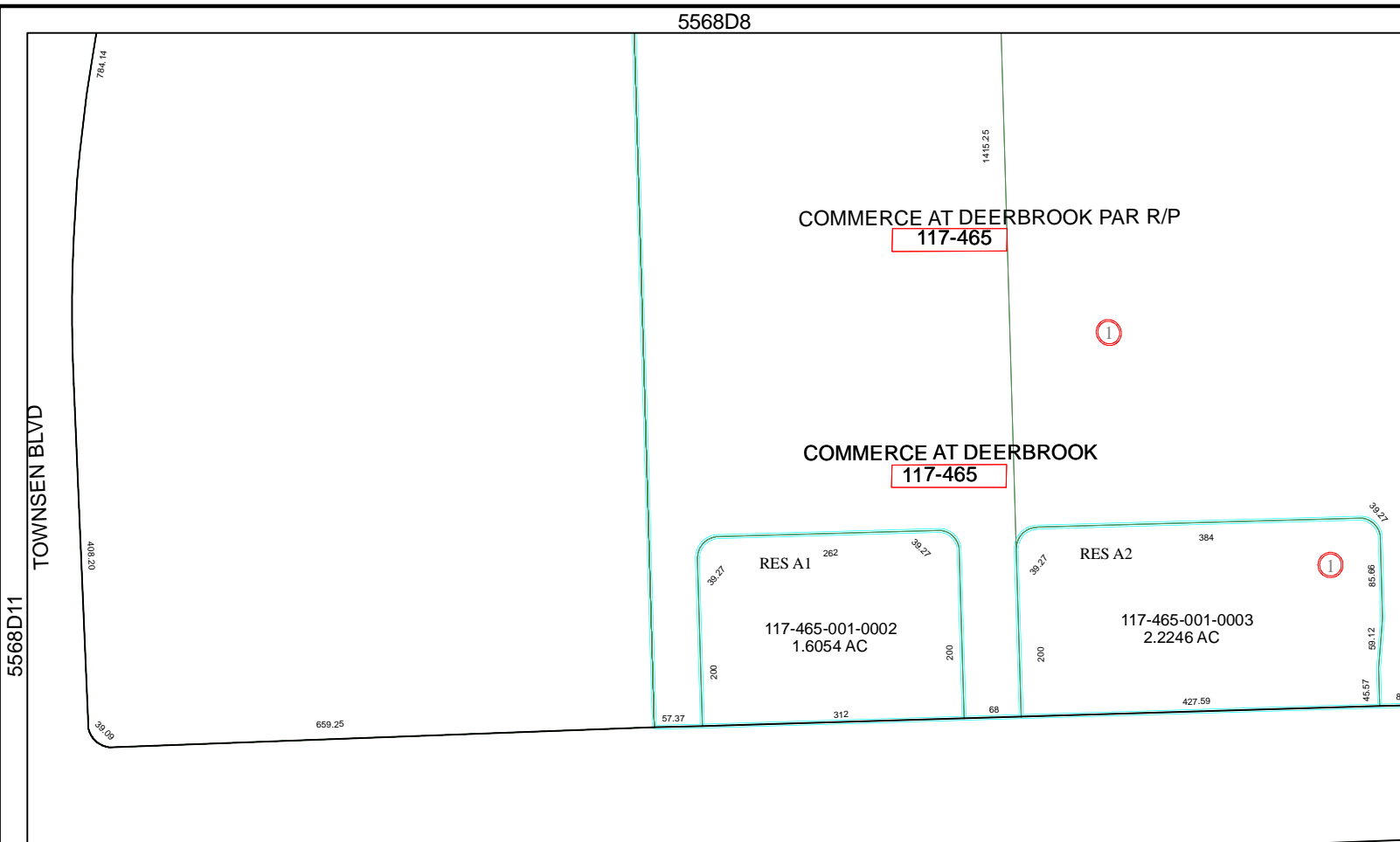


5568D8

TOWNSEN BLVD  
5568D11



5567B4

# Harris County Appraisal District

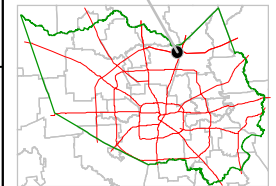


0 100 200  
PUBLICATION DATE:  
8/15/2011

Geospatial or map data maintained by the Harris County Appraisal District is for informational purposes and may not be prepared for or be suitable for legal, engineering, or surveying purposes. It does not represent an on-the-ground survey and only represents the approximate location of property boundaries.



### MAP LOCATION



## FACET 5568D

1	2	3	4
5	6	7	8
9	10	11	12