

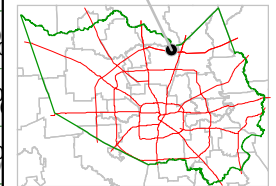
Harris County Appraisal District



0 100 200
PUBLICATION DATE:
 8/15/2011

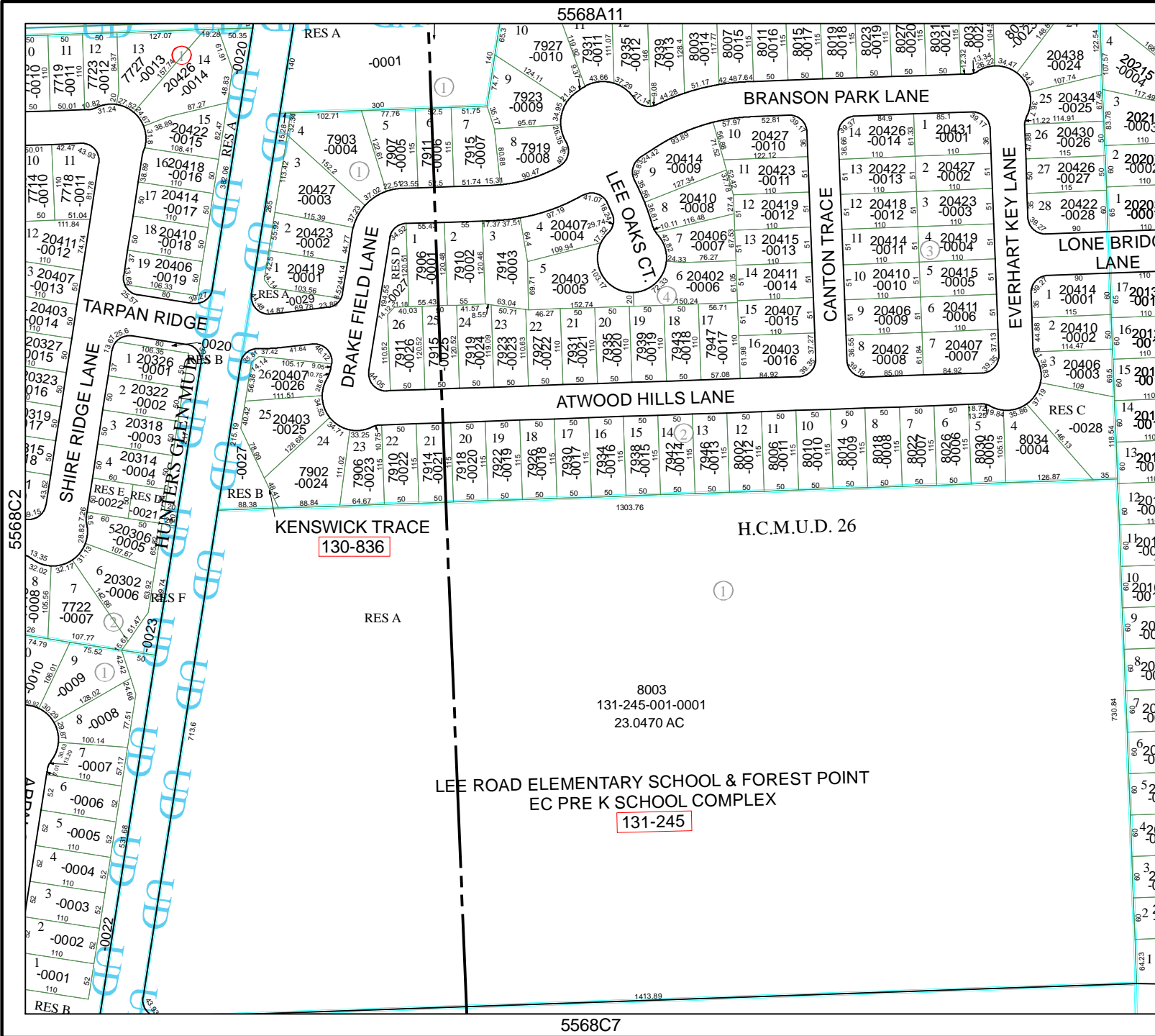
Geospatial or map data maintained by the Harris County Appraisal District is for informational purposes and may **not** have been prepared for or be suitable for legal, engineering, or surveying purposes. It does **not** represent an on-the-ground survey and only represents the approximate location of property boundaries.

MAP LOCATION



FACET 5568C

1	2	3	4
5	6	7	8
9	10	11	12



130-836

8003
 131-245-001-0001
 23.0470 AC

131-245

5568C7