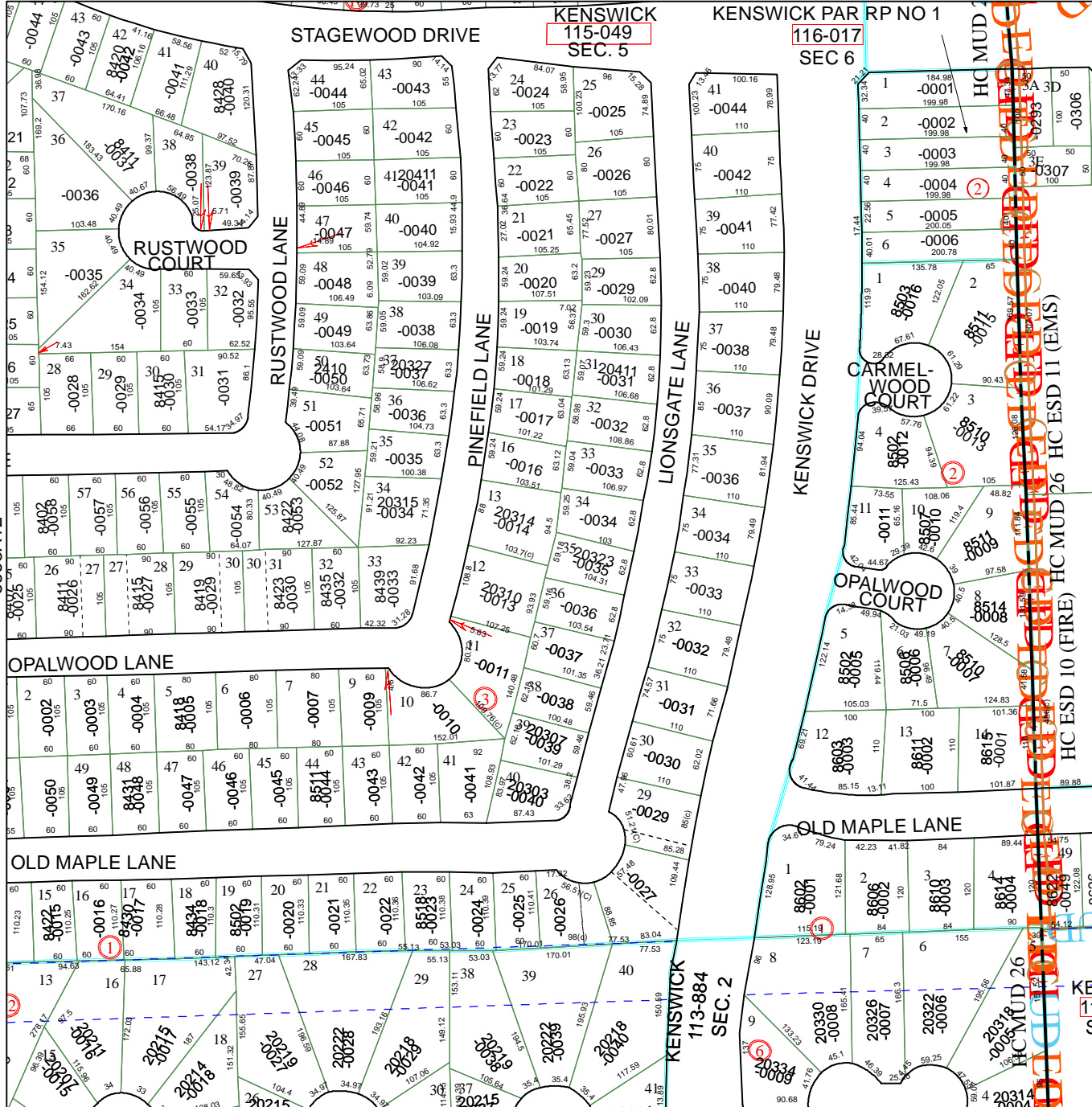


5568B5

KENSWICK
115-049
SEC. 5

KENSWICK PAR RP NO 1
116-017
SEC 6



5568D1

KENSWICK
114-459
SEC. 3

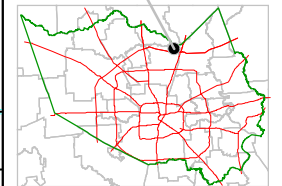
Harris County Appraisal District



0 100 200
PUBLICATION DATE:
1/27/2012

Geospatial or map data maintained by the Harris County Appraisal District is for informational purposes and may not be suitable for legal, engineering, or surveying purposes. It does not represent an on-the-ground survey and only represents the approximate location of property boundaries.

MAP LOCATION



FACET 5568B

1	2	3	4
5	6	7	8
9	10	11	12

DELETED PER ORDER 2012-0010

5568B10

5568A12