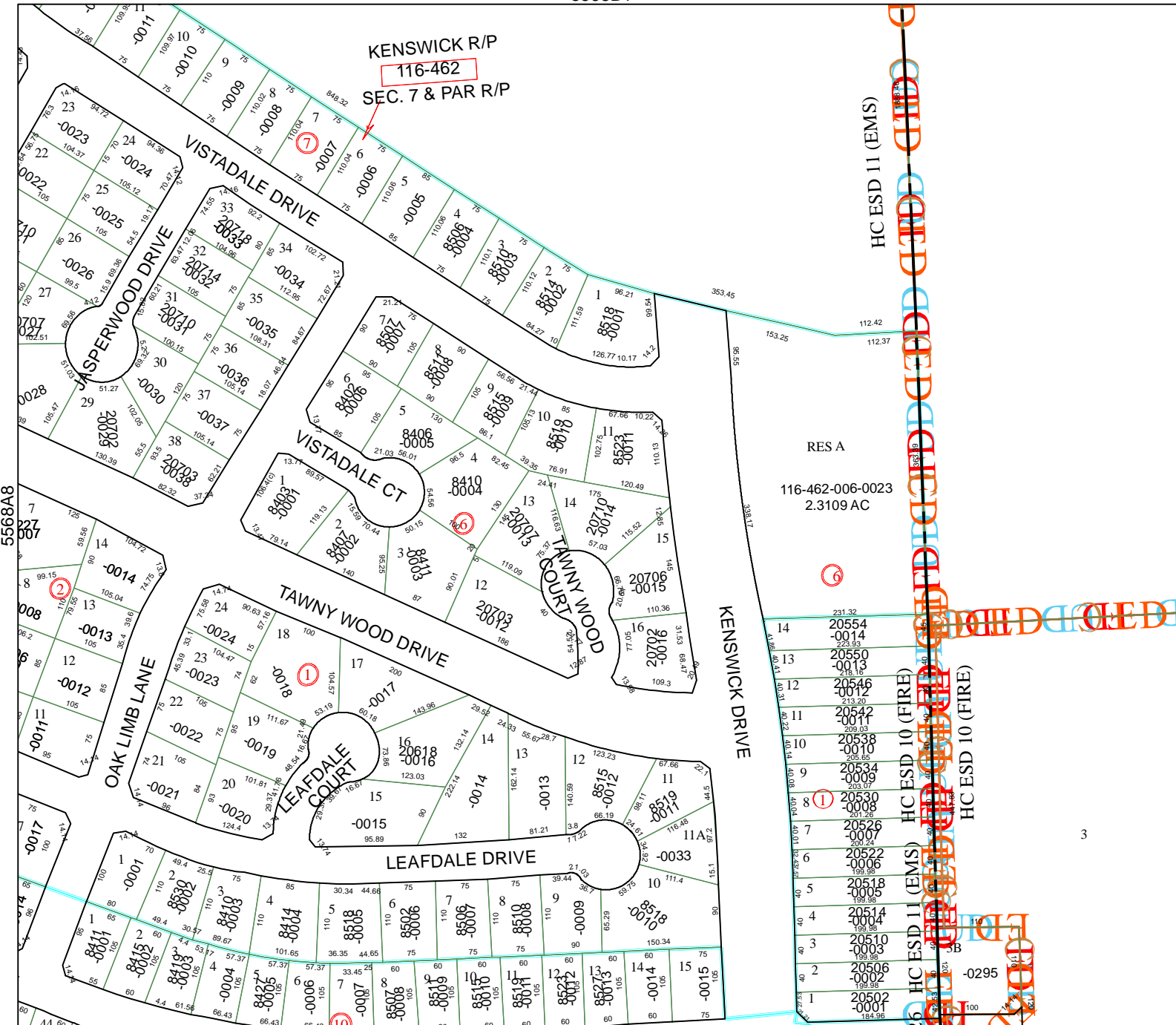


5568B1

KENSWICK R/P  
116-462  
SEC. 7 & PAR R/P

HC ESD 11 (EMS)



5568B9

# Harris County Appraisal District

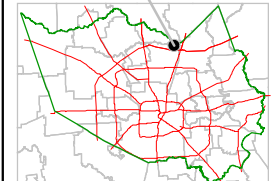


0 100 200  
PUBLICATION DATE:  
1/27/2012

Geospatial or map data maintained by the Harris County Appraisal District is for informational purposes and may not have been prepared for or be suitable for legal, engineering, or surveying purposes. It does not represent an on-the-ground survey and only represents the approximate location of property boundaries.



MAP LOCATION



## FACET 5568B

1	2	3	4
5	6	7	8
9	10	11	12