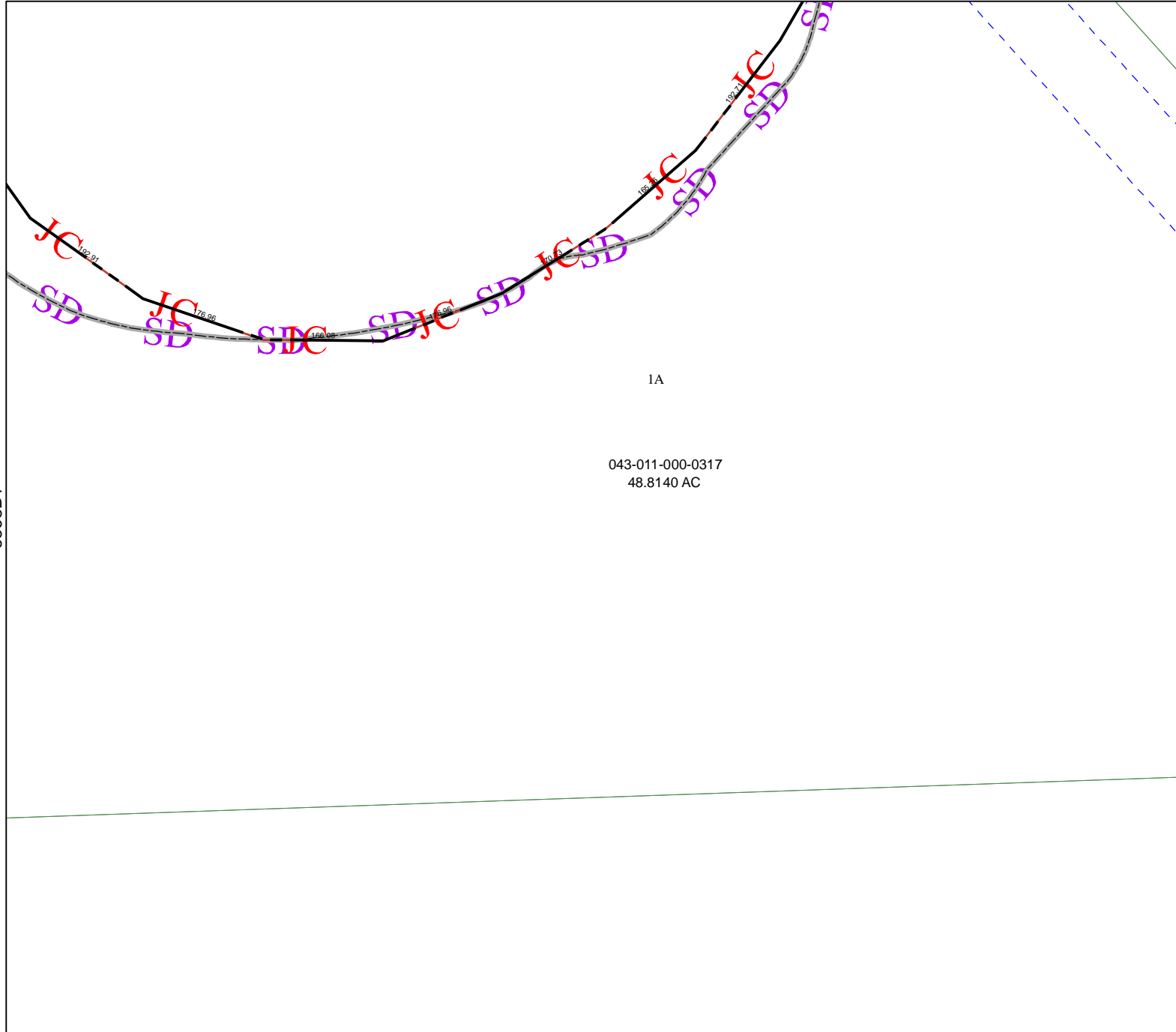


5569D10

5568B1



1A

043-011-000-0317  
48.8140 AC

5568B6

# Harris County Appraisal District



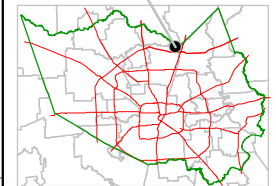
0 100 200

PUBLICATION DATE:  
8/10/2011

Geospatial or map data maintained by the Harris County Appraisal District is for informational purposes and may **not** have been prepared for or be suitable for legal, engineering, or surveying purposes. It does **not** represent an on-the-ground survey and only represents the approximate location of property boundaries.



### MAP LOCATION



## FACET 5568B

1	2	3	4
5	6	7	8
9	10	11	12

5568B3