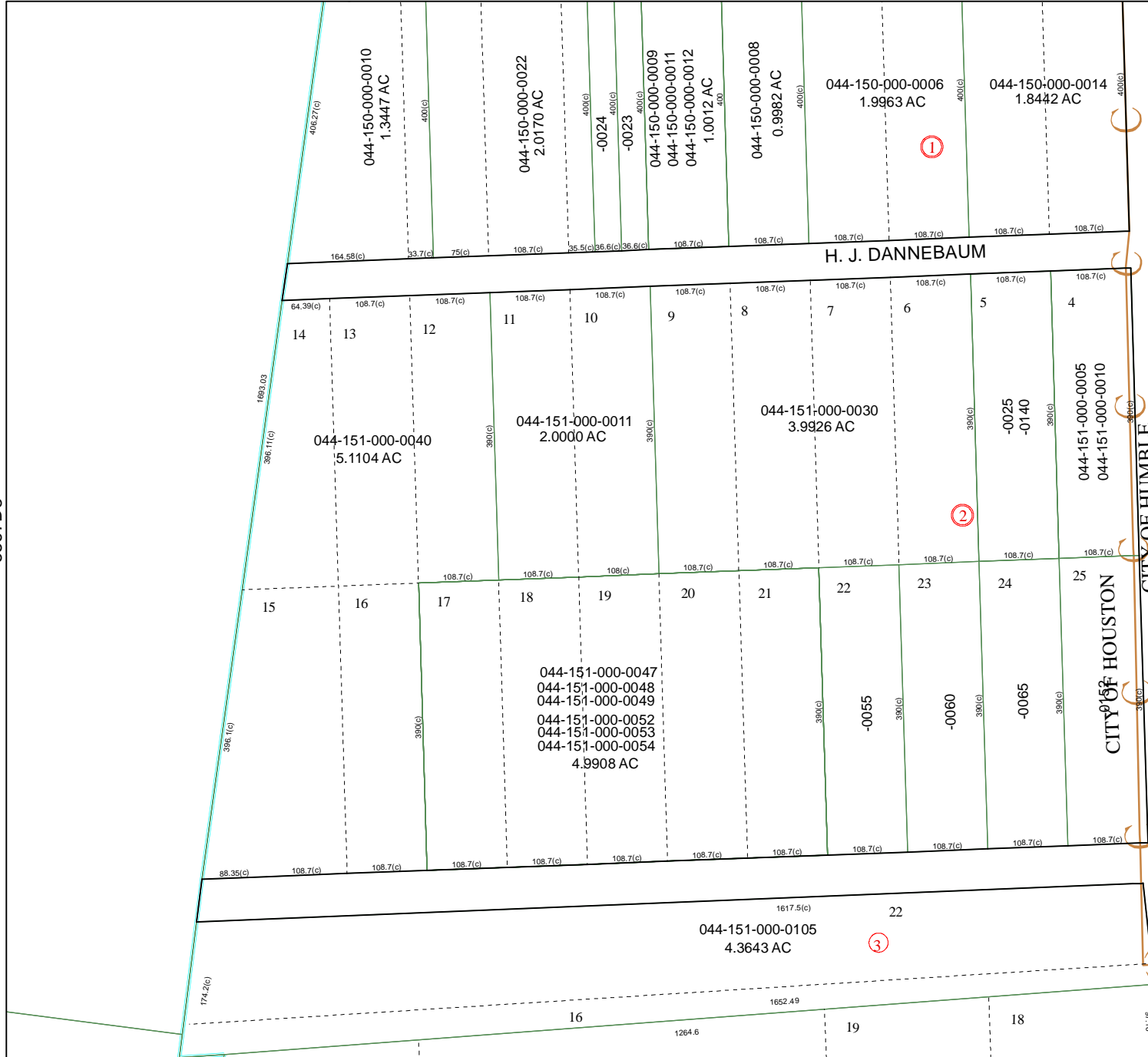


5567B12

5567D3

5567D8



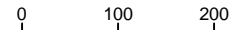
HENRY J. DANNEBAUM F

CITY OF HUMBLE

CITY OF HOUSTON

044-150

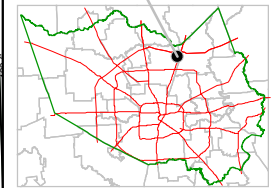
Harris County Appraisal District



PUBLICATION DATE: 2/6/2012

Geospatial or map data maintained by the Harris County Appraisal District is for informational purposes and may not have been prepared for or be suitable for legal, engineering, or surveying purposes. It does not represent an on-the-ground survey and only represents the approximate location of property boundaries.

MAP LOCATION



FACET 5567D

1	2	3	4
5	6	7	8
9	10	11	12

