

# Harris County Appraisal District

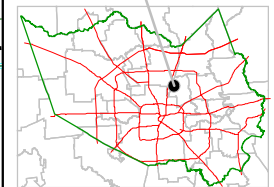


0 100 200

PUBLICATION DATE:  
8/15/2011

Geospatial or map data maintained by the Harris County Appraisal District is for informational purposes and may not be prepared for or be suitable for legal, engineering, or surveying purposes. It does not represent an on-the-ground survey and only represents the approximate location of property boundaries.

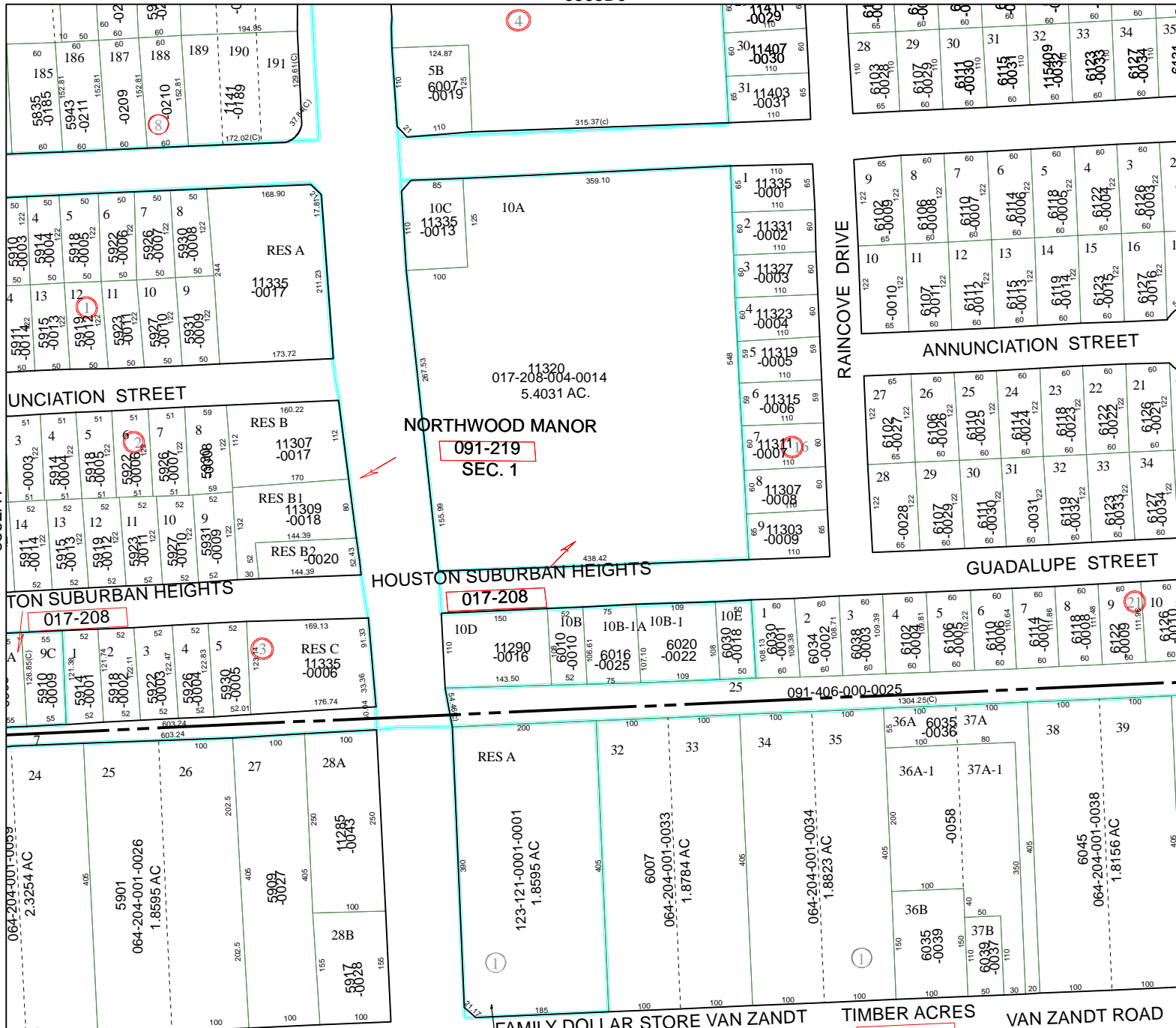
## MAP LOCATION



# FACET 5562B

1	2	3	4
5	6	7	8
9	10	11	12

5563D9



5562B5

FAMILY DOLLAR STORE VAN ZANDT TIMBER ACRES VAN ZANDT ROAD

5562A4

5562B2