

5560D5

RES A

122-443-001-0001
13.0000 AC.
6500
122-443-001-0002
6500
122-443-001-0003
6500
122-443-001-0004

BENNINGTON COMMERCIAL PARK
122-443
SEC 1

5560C12

115.1(C)

IE-1

IE-2A

IG

IC-2

IC-1A

IB-1A

7050
040-264-001-0159
5.7000 AC

RES A
6565
-0001
CORNER
CONVENIENCE
128-171

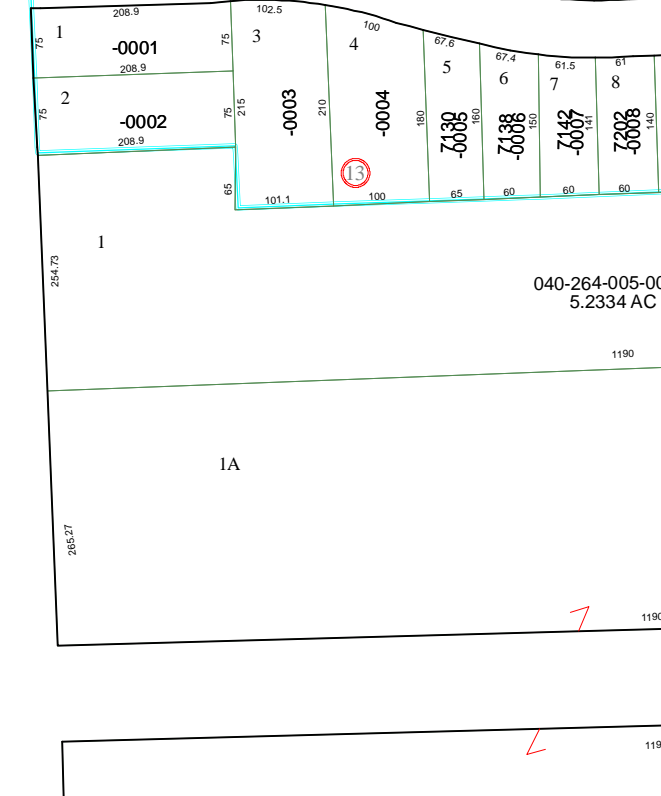
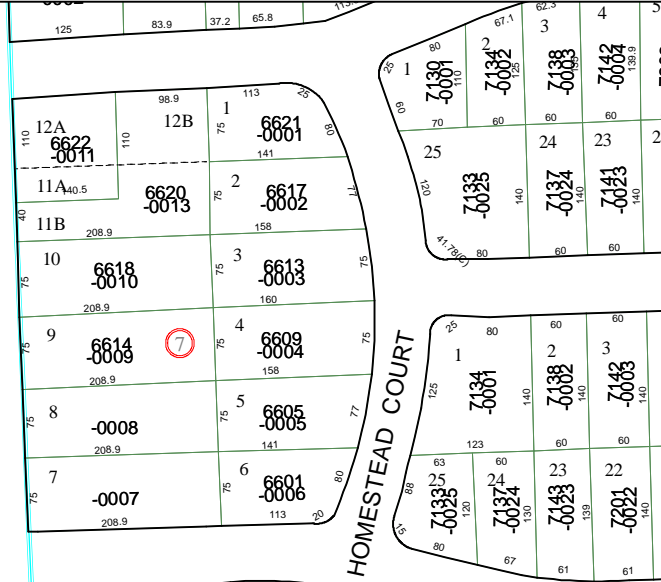
DIXON PARK
129-110

RES A

RES A
6523

129-110-001-0001
6.3106 AC
129-110-001-0002
0.2984 AC
129-110-001-0003
0.4591 AC

5559B1



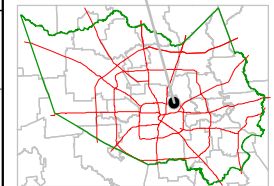
Harris County Appraisal District



0 100 200
PUBLICATION DATE:
9/1/2011

Geospatial or map data maintained by the Harris County Appraisal District is for informational purposes and may not be prepared for or be suitable for legal, engineering, or surveying purposes. It does not represent an on-the-ground survey and only represents the approximate location of property boundaries.

MAP LOCATION



FACET 5560D

1	2	3	4
5	6	7	8
9	10	11	12