

5560A8

073-111
SEC 3

CROSSLIMBERS ROAD

LANDOR LANE

TIPTON AVENUE

FINCH STREET

CAMWAY STREET

KITTREDGE STREET

HOUSTON GARDENS

066-029

Harris County Appraisal District

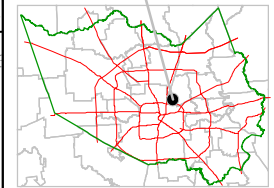


0 100 200

PUBLICATION DATE:
8/18/2011

Geospatial or map data maintained by the Harris County Appraisal District is for informational purposes and may not have been prepared for or be suitable for legal, engineering, or surveying purposes. It does not represent an on-the-ground survey and only represents the approximate location of property boundaries.

MAP LOCATION

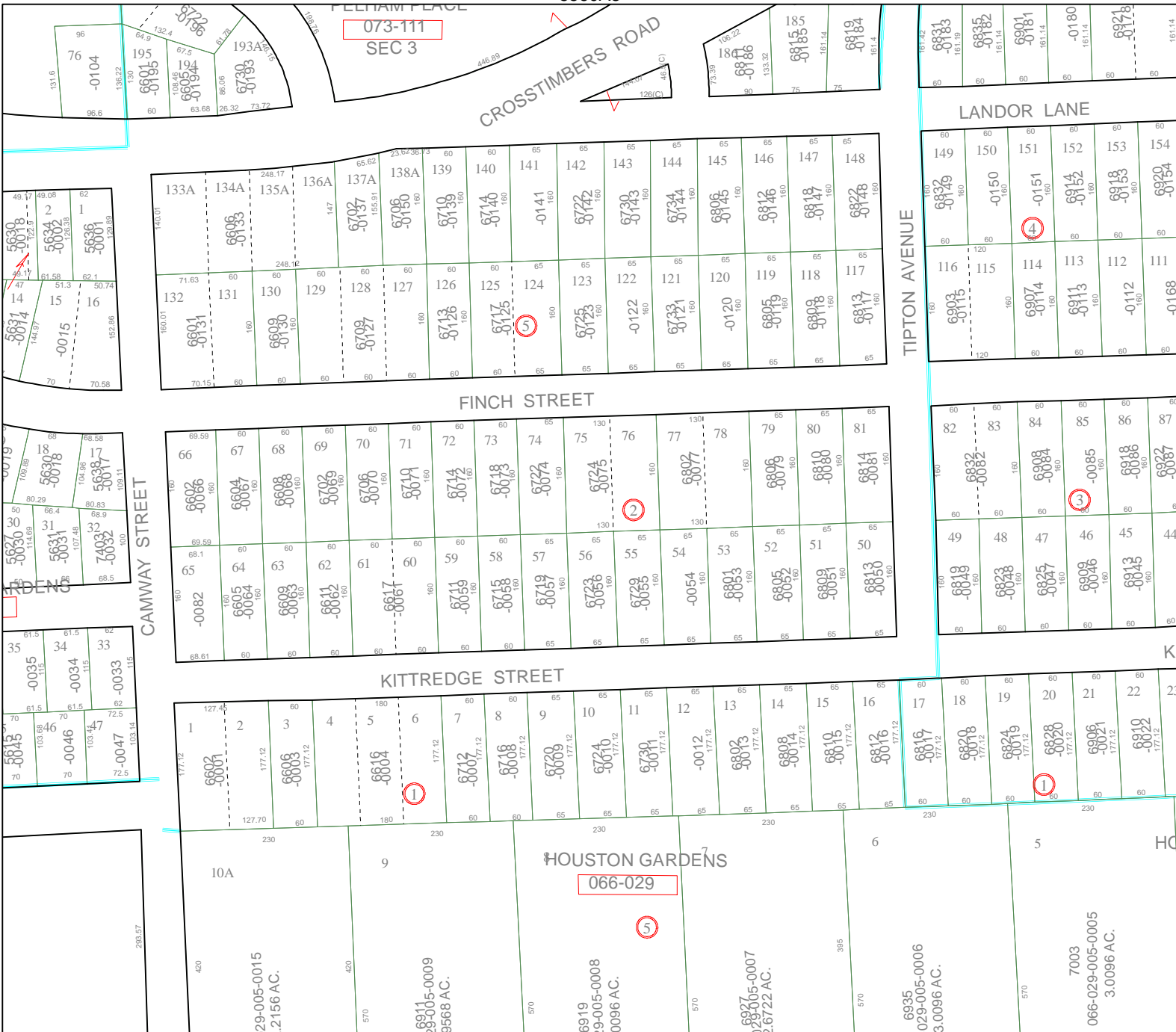


FACET 5560A

1	2	3	4
5	6	7	8
9	10	11	12

5560C4

5560A11



5560B9

HO

7003

066-029-005-0005
3.0096 AC.

6935
029-005-0006
3.0096 AC.

6919
9-005-0008
0096 AC.

6907
005-0007
2.6722 AC.

6909
005-0009
3.0096 AC.

6906
005-0006
3.0096 AC.

6903
005-0003
3.0096 AC.

6900
005-0000
3.0096 AC.

6897
005-0007
2.6722 AC.

6894
005-0004
2.6722 AC.

6891
005-0001
2.6722 AC.

6888
005-0008
2.6722 AC.

6885
005-0005
2.6722 AC.

6882
005-0002
2.6722 AC.

6879
005-0009
3.0096 AC.

6876
005-0006
3.0096 AC.

6873
005-0003
3.0096 AC.

6870
005-0000
3.0096 AC.

6867
005-0007
2.6722 AC.

6864
005-0004
2.6722 AC.

6861
005-0001
2.6722 AC.

6858
005-0008
2.6722 AC.

6855
005-0005
2.6722 AC.

6852
005-0002
2.6722 AC.

6849
005-0009
3.0096 AC.

6846
005-0006
3.0096 AC.

6843
005-0003
3.0096 AC.

6840
005-0000
3.0096 AC.

6837
005-0007
2.6722 AC.

6834
005-0004
2.6722 AC.

6831
005-0001
2.6722 AC.

6828
005-0008
2.6722 AC.

6825
005-0005
2.6722 AC.

6822
005-0002
2.6722 AC.

6819
005-0009
3.0096 AC.

6816
005-0006
3.0096 AC.

6813
005-0003
3.0096 AC.

6810
005-0000
3.0096 AC.

6807
005-0007
2.6722 AC.

6804
005-0004
2.6722 AC.

6801
005-0001
2.6722 AC.

6798
005-0008
2.6722 AC.

6795
005-0005
2.6722 AC.

6792
005-0002
2.6722 AC.

6789
005-0009
3.0096 AC.

6786
005-0006
3.0096 AC.

6783
005-0003
3.0096 AC.

6780
005-0000
3.0096 AC.

6777
005-0007
2.6722 AC.

6774
005-0004
2.6722 AC.

6771
005-0001
2.6722 AC.

6768
005-0008
2.6722 AC.

6765
005-0005
2.6722 AC.

6762
005-0002
2.6722 AC.

6759
005-0009
3.0096 AC.

6756
005-0006
3.0096 AC.

6753
005-0003
3.0096 AC.

6750
005-0000
3.0096 AC.

6747
005-0007
2.6722 AC.

6744
005-0004
2.6722 AC.

6741
005-0001
2.6722 AC.

6738
005-0008
2.6722 AC.

6735
005-0005
2.6722 AC.

6732
005-0002
2.6722 AC.

6729
005-0009
3.0096 AC.

6726
005-0006
3.0096 AC.

6723
005-0003
3.0096 AC.

6720
005-0000
3.0096 AC.

6717
005-0007
2.6722 AC.

6714
005-0004
2.6722 AC.

6711
005-0001
2.6722 AC.

6708
005-0008
2.6722 AC.

6705
005-0005
2.6722 AC.

6702
005-0002
2.6722 AC.

6699
005-0009
3.0096 AC.

6696
005-0006
3.0096 AC.

6693
005-0003
3.0096 AC.

6690
005-0000
3.0096 AC.

6687
005-0007
2.6722 AC.

6684
005-0004
2.6722 AC.

6681
005-0001
2.6722 AC.

6678
005-0008
2.6722 AC.

6675
005-0005
2.6722 AC.

6672
005-0002
2.6722 AC.

6669
005-0009
3.0096 AC.

6666
005-0006
3.0096 AC.

6663
005-0003
3.0096 AC.

6660
005-0000
3.0096 AC.

6657
005-0007
2.6722 AC.

6654
005-0004
2.6722 AC.

6651
005-0001
2.6722 AC.

6648
005-0008
2.6722 AC.

6645
005-0005
2.6722 AC.

6642
005-0002
2.6722 AC.

6639
005-0009
3.0096 AC.

6636
005-0006
3.0096 AC.

6633
005-0003
3.0096 AC.

6630
005-0000
3.0096 AC.

6627
005-0007
2.6722 AC.

6624
005-0004
2.6722 AC.

6621
005-0001
2.6722 AC.

6618
005-0008
2.6722 AC.

6615
005-0005
2.6722 AC.

6612
005-0002
2.6722 AC.

6609
005-0009
3.0096 AC.

6606
005-0006
3.0096 AC.

6603
005-0003
3.0096 AC.

6600
005-0000
3.0096 AC.

6597
005-0007
2.6722 AC.

6594
005-0004
2.6722 AC.

6591
005-0001
2.6722 AC.

6588
005-0008
2.6722 AC.

6585
005-0005
2.6722 AC.

6582
005-0002
2.6722 AC.

6579
005-0009
3.0096 AC.

6576
005-0006
3.0096 AC.

6573
005-0003
3.0096 AC.

6570
005-0000
3.0096 AC.

6567
005-0007
2.6722 AC.

6564
005-0004
2.6722 AC.

6561
005-0001
2.6722 AC.

6558
005-0008
2.6722 AC.

6555
005-0005
2.6722 AC.

6552
005-0002
2.6722 AC.

6549
005-0009
3.0096 AC.

6546
005-0006
3.0096 AC.

6543
005-0003
3.0096 AC.

6540
005-0000
3.0096 AC.

6537
005-0007
2.6722 AC.

6534
005-0004
2.6722 AC.

6531
005-0001
2.6722 AC.

6528
005-0008
2.6722 AC.

6525
005-0005
2.6722 AC.

6522
005-0002
2.6722 AC.

6519
005-0009
3.0096 AC.

6516
005-0006
3.0096 AC.

6513
005-0003
3.0096 AC.

6510
005-0000
3.0096 AC.

6507
005-0007
2.6722 AC.

6504
005-0004
2.6722 AC.

6501
005-0001
2.6722 AC.

6498
005-0008
2.6722 AC.

6495
005-0005
2.6722 AC.

6492
005-0002
2.6722 AC.

6489
005-0009
3.0096 AC.

6486
005-0006
3.0096 AC.

6483
005-0003
3.0096 AC.

6480
005-0000
3.0096 AC.

6477
005-0007
2.6722 AC.

6474
005-0004
2.6722 AC.

6471
005-0001
2.6722 AC.

6468
005-0008
2.6722 AC.

6465
005-0005
2.6722 AC.

6462
005-0002
2.6722 AC.

6459
005-0009
3.0096 AC.

6456
005-0006
3.0096 AC.

6453
005-0003
3.0096 AC.

6450
005-0000
3.0096 AC.

6447
005-0007
2.6722 AC.

6444
005-0004
2.6722 AC.

6441
005-0001
2.6722 AC.

6438
005-0008
2.6722 AC.

6435
005-0005
2.6722 AC.

6432
005-0002
2.6722 AC.

6429
005-0009
3.0096 AC.

6426
005-0006
3.0096 AC.

6423
005-0003
3.0096 AC.

6420
005-0000
3.0096 AC.

6417
005-0007
2.6722 AC.

6414
005-0004
2.6722 AC.

6411
005-0001
2.6722 AC.

6408
005-0008
2.6722 AC.

6405
005-0005
2.6722 AC.

6402
005-0002
2.6722 AC.

6399
005-0009
3.0096 AC.

6396
005-0006
3.0096 AC.

6393
005-0003
3.0096 AC.

6390
005-0000
3.0096 AC.

6387
005-0007
2.6722 AC.

6384
005-0004
2.6722 AC.

6381
005-0001
2.6722 AC.

6378
005-0008
2.6722 AC.

6375
005-0005
2.6722 AC.

6372
005-0002
2.6722 AC.

6369
005-0009
3.0096 AC.

6366
005-0006
3.0096 AC.

6363
005-0003
3.0096 AC.

6360
005-0000
3.0096 AC.

6357
005-0007
2.6722 AC.