

Harris County Appraisal District

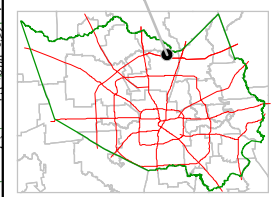


0 100 200
 PUBLICATION DATE:
 8/15/2011

Geospatial or map data maintained by the Harris County Appraisal District is for informational purposes and may not have been prepared for or be suitable for legal, engineering, or surveying purposes. It does not represent an on-the-ground survey and only represents the approximate location of property boundaries.

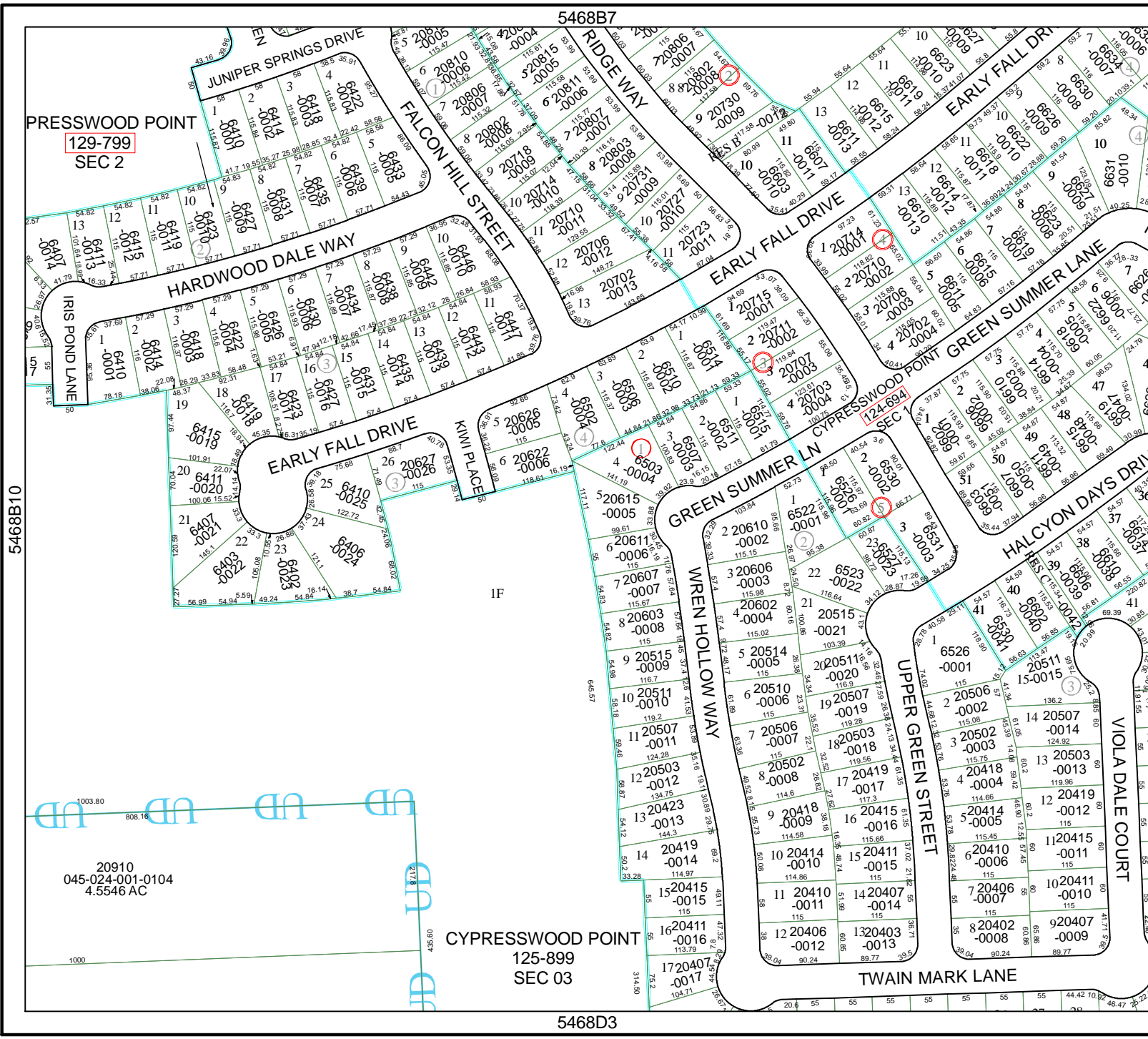


MAP LOCATION



FACET 5468B

1	2	3	4
5	6	7	8
9	10	11	12



PRESSWOOD POINT
 129-799
 SEC 2

5468B10

20910
 045-024-001-0104
 4.5546 AC

CYPRESSWOOD POINT
 125-899
 SEC 03

5468D3