

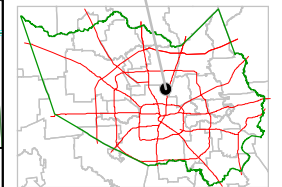
Harris County Appraisal District



0 100 200
PUBLICATION DATE:
 8/15/2011

Geospatial or map data maintained by the Harris County Appraisal District is for informational purposes and may not have been prepared for or be suitable for legal, engineering, or surveying purposes. It does not represent an on-the-ground survey and only represents the approximate location of property boundaries.

MAP LOCATION

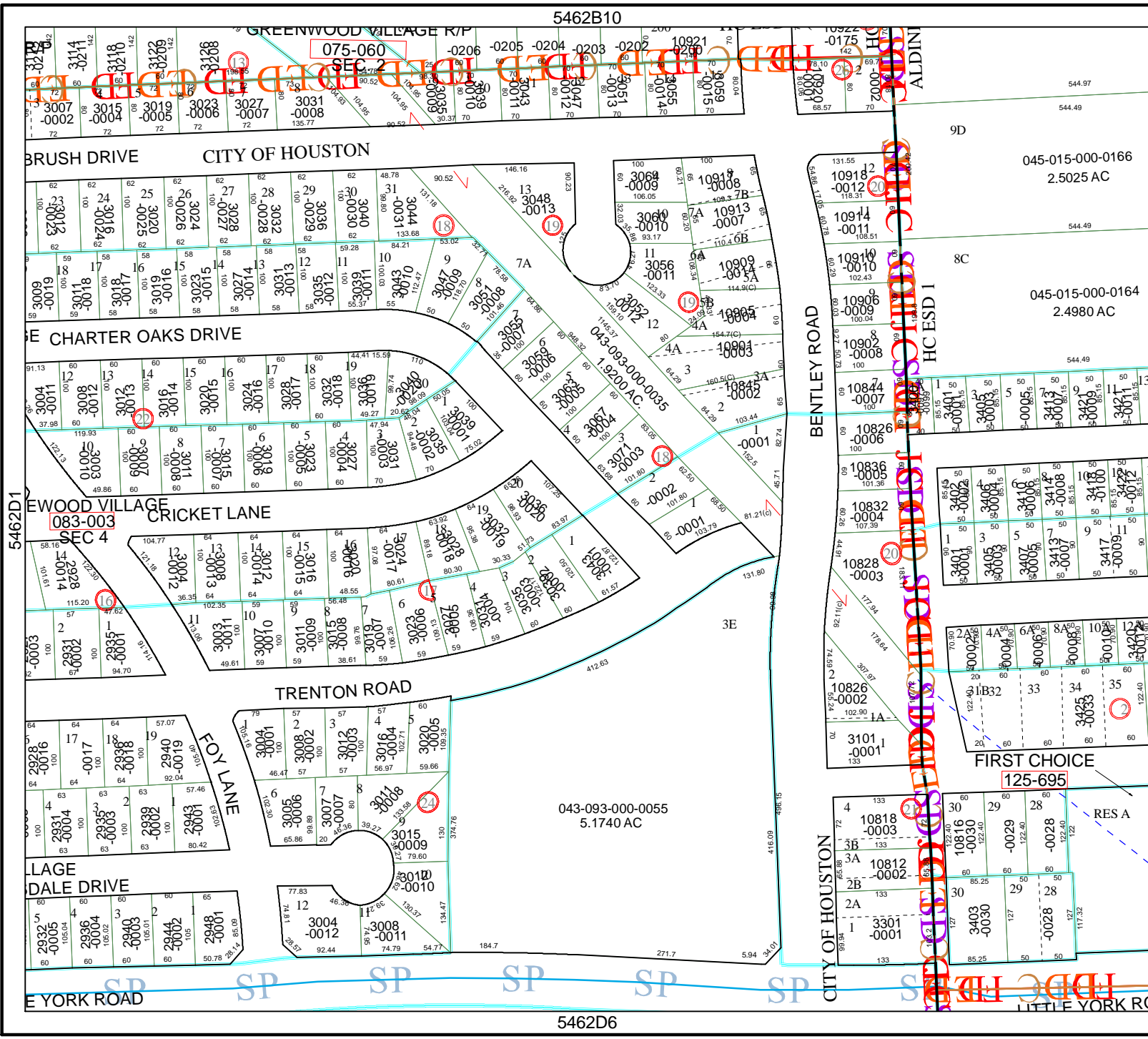


FACET 5462D

1	2	3	4
5	6	7	8
9	10	11	12

5462B10

5462D6



5462D3

9D

8C

3E

RES A

125-695

10818

10812

3301

10826

075-060

083-003

043-093-000-0035

043-093-000-0055

045-015-000-0166

045-015-000-0164

043-093-000-0055

043-093-000-0055

043-093-000-0055

043-093-000-0055

043-093-000-0055

043-093-000-0055

043-093-000-0055

043-093-000-0055

043-093-000-0055

045-015-000-0166

045-015-000-0164

045-015-000-0166

045-015-000-0164

045-015-000-0166

045-015-000-0164

045-015-000-0166

045-015-000-0164

045-015-000-0166

045-015-000-0164

045-015-000-0166

045-015-000-0164

045-015-000-0166

045-015-000-0164

045-015-000-0166

045-015-000-0166

045-015-000-0164

045-015-000-0166

045-015-000-0164

045-015-000-0166

045-015-000-0164

045-015-000-0166

045-015-000-0164

045-015-000-0166

045-015-000-0164

045-015-000-0166

045-015-000-0164

045-015-000-0166

045-015-000-0164

045-015-000-0166