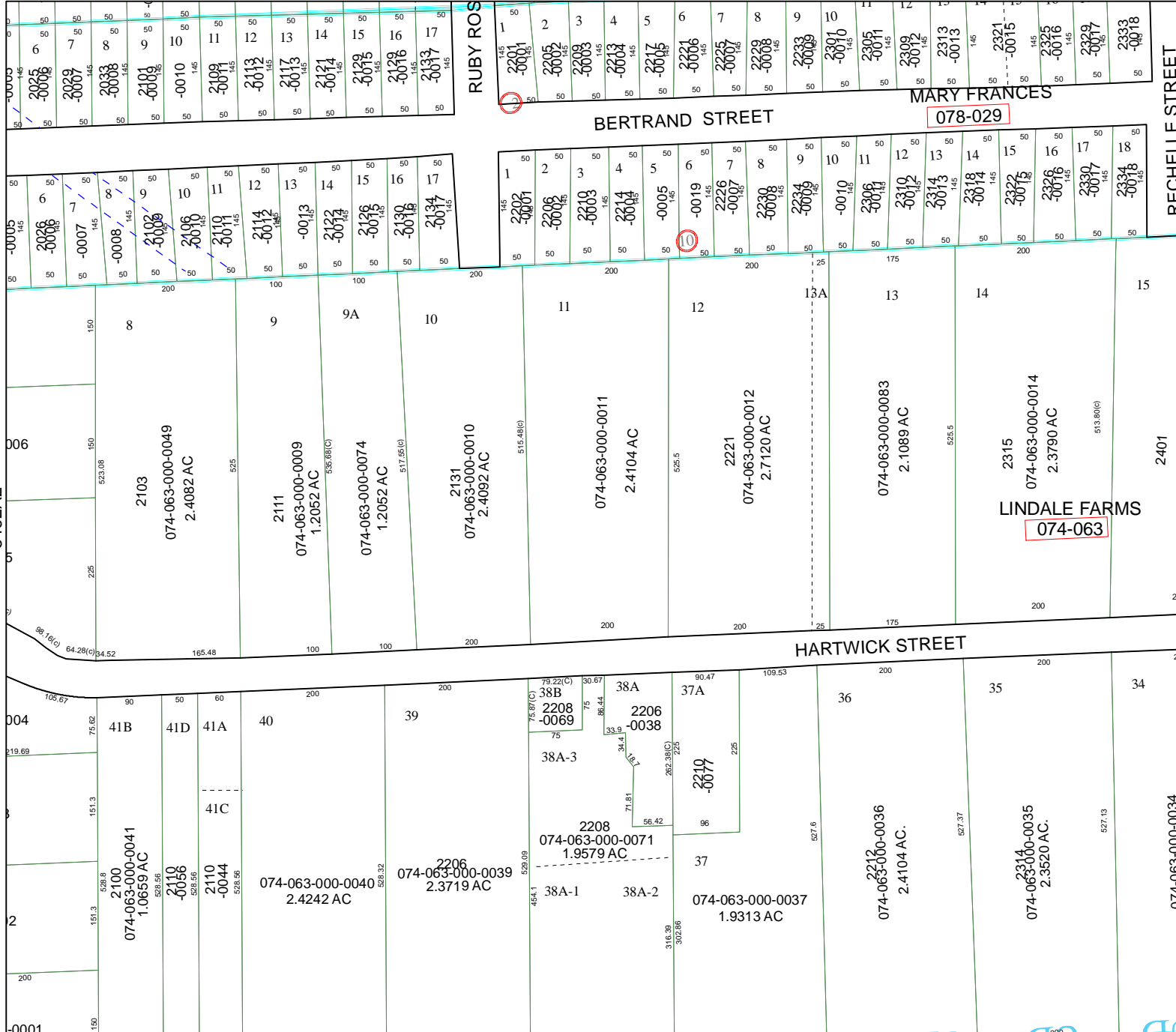


5463C11



5462A7

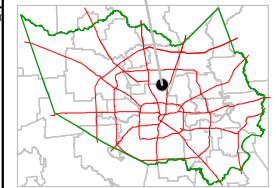
Harris County Appraisal District



0 100 200
 PUBLICATION DATE:
 8/15/2011

Geospatial or map data maintained by the Harris County Appraisal District is for informational purposes and may not be prepared for or be suitable for legal, engineering, or surveying purposes. It does not represent an on-the-ground survey and only represents the approximate location of property boundaries.

MAP LOCATION



FACET 5462A

1	2	3	4
5	6	7	8
9	10	11	12



5462A4

074-063-000-0034

MARY FRANCES

078-029

BERTRAND STREET

HARTWICK STREET

RECHELLE STREET

5462A2

006

004

002

0001

RUBY ROS

LINDALE FARMS

074-063

1	2	3	4	5	6	7	8	9	10	11	12	13	14	15	16	17	18
2201	2205	2208	2213	2217	2221	2226	2228	2233	2301	2305	2309	2313	2321	2325	2329	2333	2337
-0001	-0005	-0008	-0014	-0018	-0022	-0027	-0028	-0033	-0041	-0045	-0049	-0053	-0061	-0065	-0069	-0073	-0077

6	7	8	9	10	11	12	13	14	15	16	17
2025	2029	2033	2101	-0010	2109	2113	2117	2121	2129	2133	2137
-0008	-0012	-0016	-0024	-0010	-0014	-0018	-0022	-0026	-0030	-0034	-0038

6	7	8	9	10	11	12	13	14	15	16	17
2026	2030	2102	2106	2110	2114	2118	2122	2126	2130	2134	2138
-0009	-0013	-0017	-0021	-0025	-0029	-0033	-0037	-0041	-0045	-0049	-0053

1	2	3	4	5	6	7	8	9	10	11	12	13	14	15	16	17	18
2202	2206	2209	2214	-0005	-0019	2226	2230	2234	-0010	2306	2310	2314	2318	2322	2326	2330	2334
-0001	-0005	-0008	-0014	-0018	-0022	-0027	-0028	-0033	-0041	-0045	-0049	-0053	-0057	-0061	-0065	-0069	-0073

2103
 074-063-000-0049
 2.4082 AC

2111
 074-063-000-0009
 1.2052 AC

074-063-000-0074
 1.2052 AC

2131
 074-063-000-0010
 2.4092 AC

074-063-000-0011
 2.4104 AC

2221
 074-063-000-0012
 2.7120 AC

074-063-000-0083
 2.1089 AC

2315
 074-063-000-0014
 2.3790 AC

2100
 074-063-000-0041
 1.0659 AC

2110
 -0056

2110
 -0044

074-063-000-0040
 2.4242 AC

2206
 074-063-000-0039
 2.3719 AC

38B
 2208
 -0069

38A-3
 2206
 -0038

2210
 -0077

2208
 074-063-000-0071
 1.9579 AC

38A-1
 38A-2

074-063-000-0037
 1.9313 AC

074-063-000-0036
 2.4104 AC.

074-063-000-0035
 2.3520 AC.