

5461A4

RES A

ETHEL R. COOP ELEMENTARY SCHOOL
126-984

126-984-001-0001
6.9486 AC

EDGEWORTH STREET

CHAPIS STREET

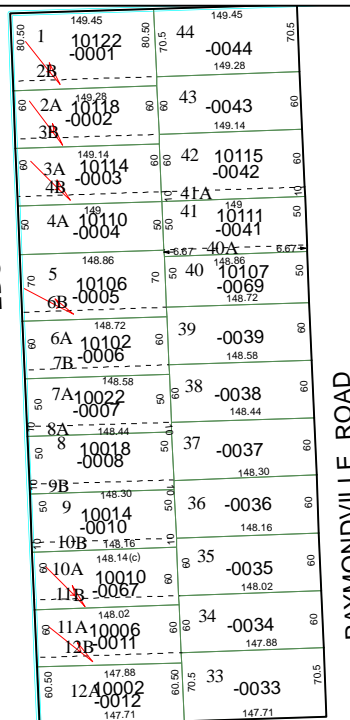
HOLLIS STREET

DUNBAR PLACE
074-031

HITCHCOCK STREET

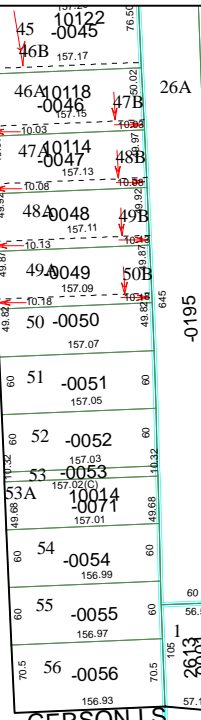
SCHILDERCREST U/R
092-001

5461A12




RAYMONDVILLE ROAD

TRAMONTE ESTATES
075-207



GERSON'S
075-051

Harris County Appraisal District

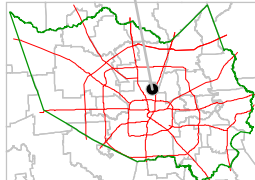


0 100 200

PUBLICATION DATE:
8/15/2011

Geospatial or map data maintained by the Harris County Appraisal District is for informational purposes and may not be prepared for or be suitable for legal, engineering, or surveying purposes. It does not represent an on-the-ground survey and only represents the approximate location of property boundaries.

MAP LOCATION



FACET 5461A

1	2	3	4
5	6	7	8
9	10	11	12

5461A7
ALDINE-WESTFIELD ROAD