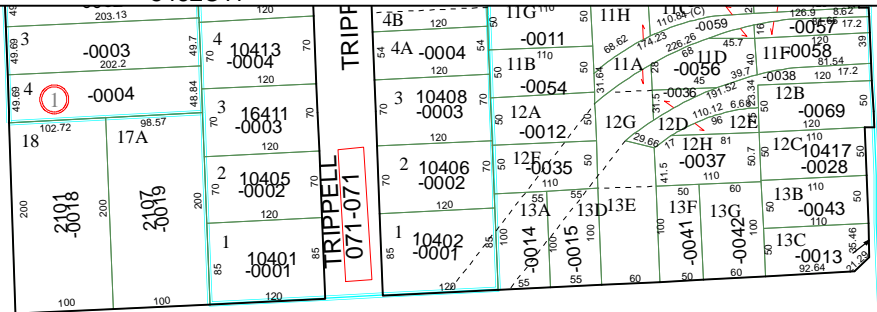
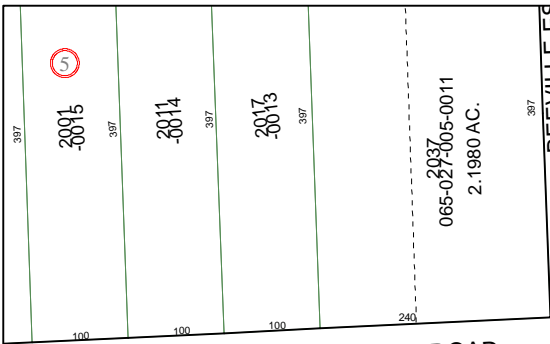
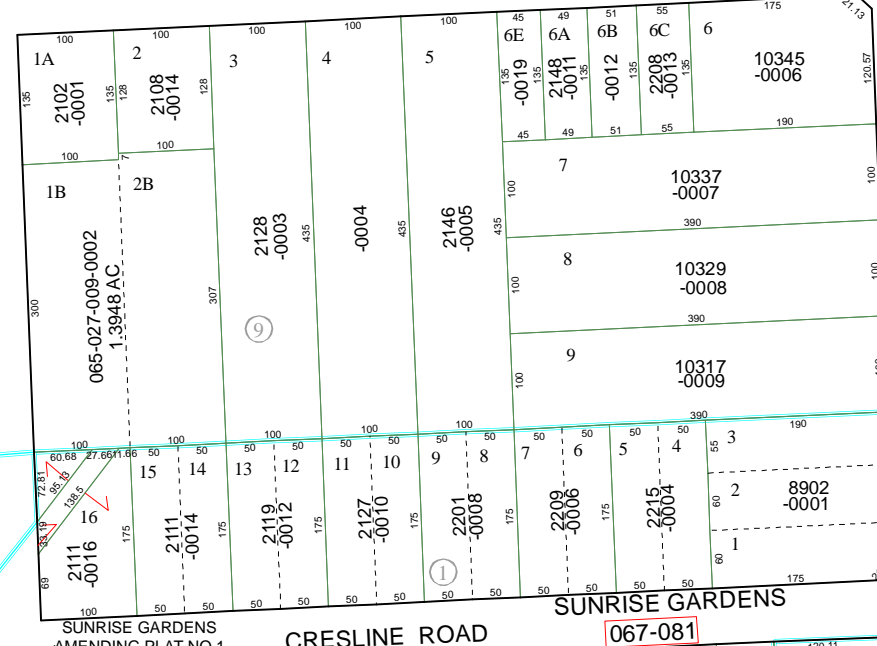
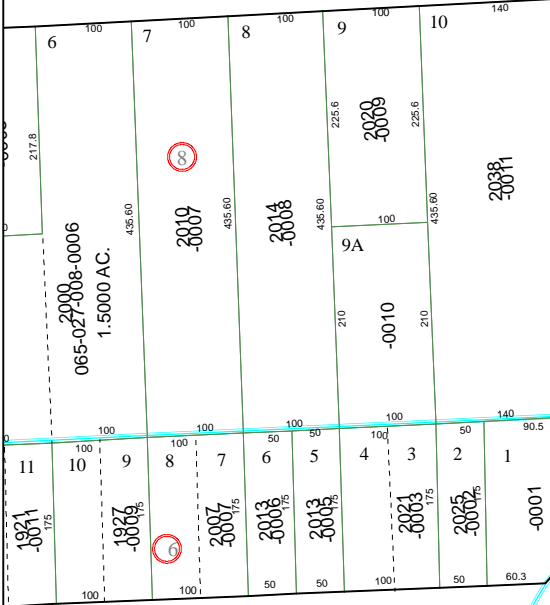


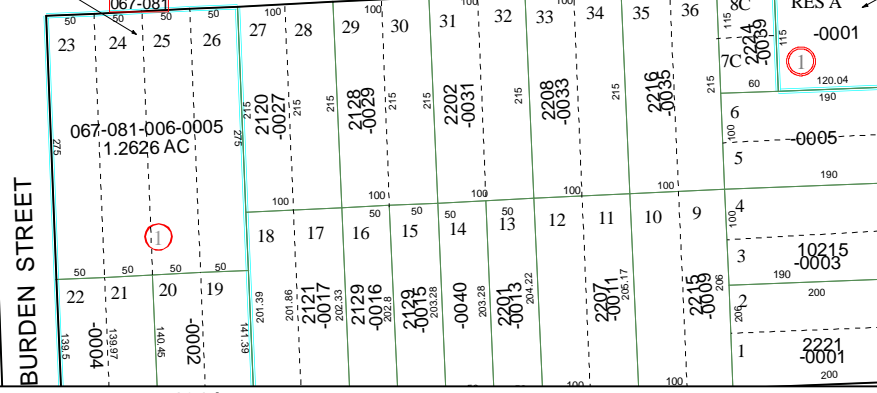
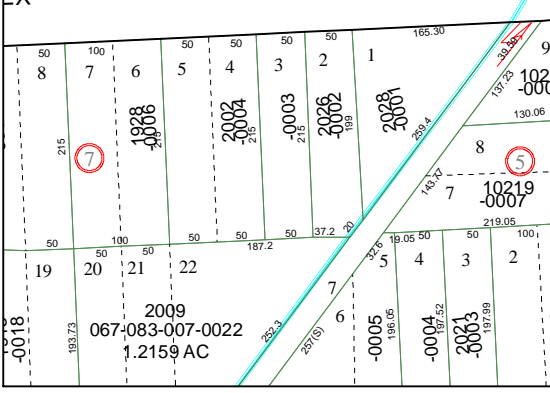
5462C11



CHARLES ROAD



CRESLINE ROAD



5461A7

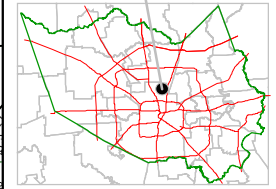
Harris County Appraisal District



PUBLICATION DATE: 8/15/2011

Geospatial or map data maintained by the Harris County Appraisal District is for informational purposes and may not be prepared for or be suitable for legal, engineering, or surveying purposes. It does not represent an on-the-ground survey and only represents the approximate location of property boundaries.

MAP LOCATION



FACET 5461A

1	2	3	4
5	6	7	8
9	10	11	12

5461A2

ALDINE-WESTFIELD ROAD

ALFARO BUSINESS PARK

