

5460B10

RES A

7501
125-448-001-0001
7.1780 AC

JAMES BOWIE ELEMENTARY SCHOOL
125-448

12A

7408
100-172-000-0004
2.6261 AC

FLAMINGO GARDENS
APTS & R/P
100-172

12

7491
100-172-000-0002
2.6363 AC

11B

7306
100-172-000-0001
2.8802 AC

10B

7305
096-246-000-0001
3.1000 AC.

FRIEDMAN APT.
096-246

11B

7114
-0230

11

7124
-0220

12

7130
-0235

12A

7116
-0248

11A

042-232-000-0225
6.0494 AC.

12B

61

3001
-0061

62

3003
-0062

63

3009
-0063

64

3063
-0064

65

3017
-0065

66

3083
-0066

67

3087
-0067

68

3111
-0068

69

3115
-0069

70

3178
-0070

71

3203
-0071

72

3205
-0072

73

3211
-0073

74

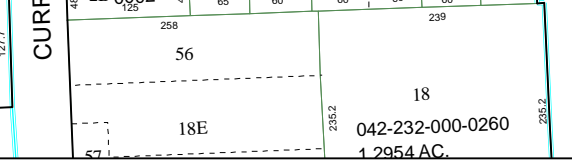
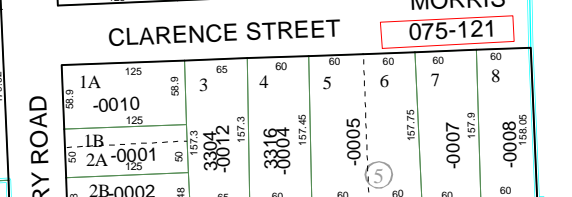
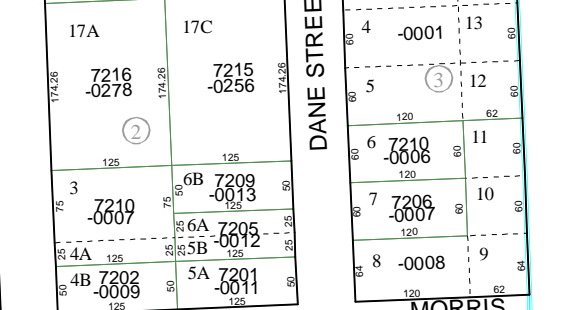
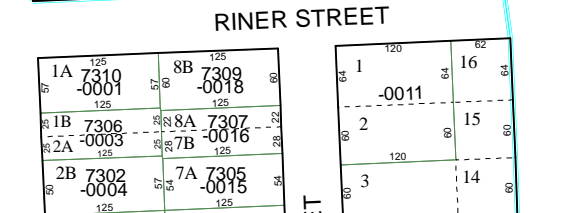
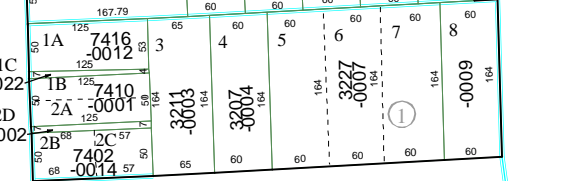
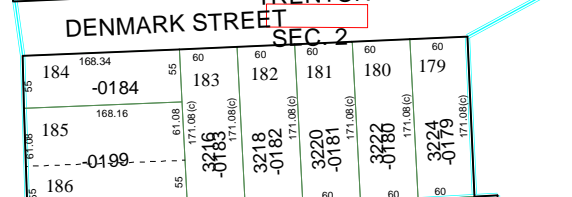
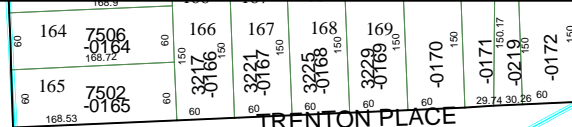
3215
-0074

75

3219
-0075

WOODWARD
075-226

5460D6



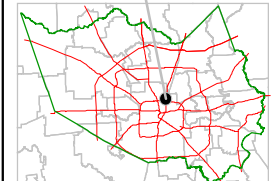
Harris County Appraisal District



0 100 200
PUBLICATION DATE:
8/15/2011

Geospatial or map data maintained by the Harris County Appraisal District is for informational purposes and may not be prepared for or be suitable for legal, engineering, or surveying purposes. It does not represent an on-the-ground survey and only represents the approximate location of property boundaries.

MAP LOCATION



FACET 5460D

1	2	3	4
5	6	7	8
9	10	11	12

5460D1

5460D3

