

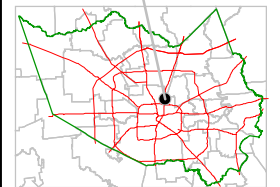
Harris County Appraisal District



0 100 200
PUBLICATION DATE:
 2/8/2012

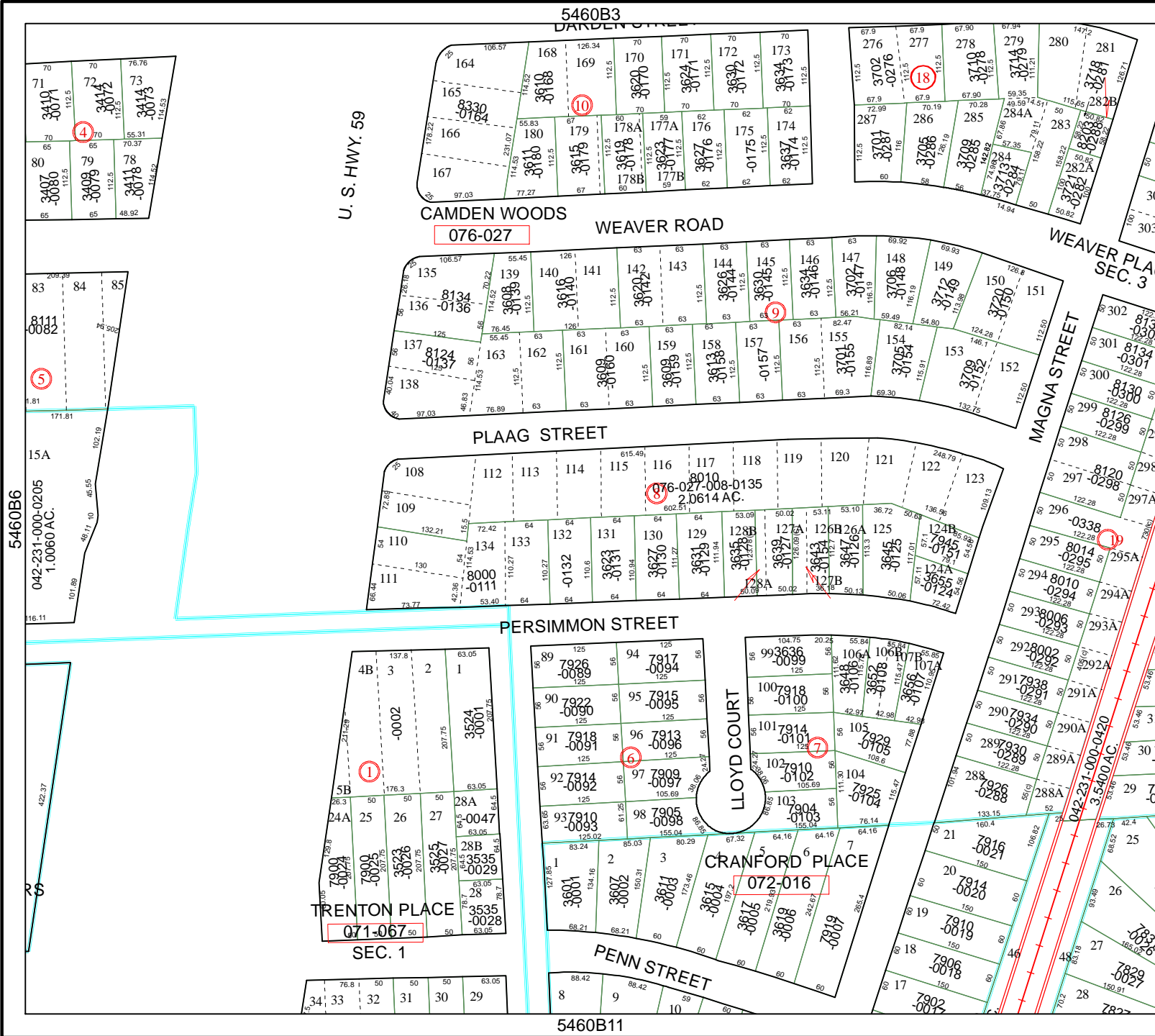
Geospatial or map data maintained by the Harris County Appraisal District is for informational purposes and may not have been prepared for or be suitable for legal, engineering, or surveying purposes. It does not represent an on-the-ground survey and only represents the approximate location of property boundaries.

MAP LOCATION



FACET 5460B

1	2	3	4
5	6	7	8
9	10	11	12



5460B3

U. S. HWY. 59

CAMDEN WOODS

WEAVER ROAD

076-027

WEAVER PLAZA SEC. 3

MAGNA STREET

PLAAG STREET

5460B6

042-231-000-0205
 1.0060 AC.

PERSIMMON STREET

LLOYD COURT

CRANFORD PLACE

PENN STREET

TRENTON PLACE

SEC. 1

5460B11