

5461D9

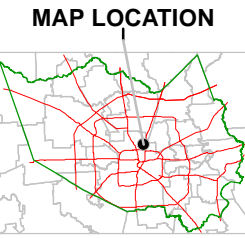
SC 8804
 5B 2815
 -0020 143.6
 -0025 153.3
 -0026 168.75
 -0027 173.5
 -0028 178.25
 -0029 183.0
 -0030 187.75
 -0031 192.5
 -0032 197.25
 -0033 202.0
 -0034 206.75
 -0035 211.5
 -0036 216.25
 -0037 221.0
 -0038 225.75
 -0039 230.5
 -0040 235.25
 -0041 240.0
 -0042 244.75
 -0043 249.5
 -0044 254.25
 -0045 259.0
 -0046 263.75
 -0047 268.5
 -0048 273.25
 -0049 278.0
 -0050 282.75
 -0051 287.5
 -0052 292.25
 -0053 297.0
 -0054 301.75
 -0055 306.5
 -0056 311.25
 -0057 316.0
 -0058 320.75
 -0059 325.5
 -0060 330.25
 -0061 335.0
 -0062 339.75
 -0063 344.5
 -0064 349.25
 -0065 354.0
 -0066 358.75
 -0067 363.5
 -0068 368.25
 -0069 373.0
 -0070 377.75
 -0071 382.5
 -0072 387.25
 -0073 392.0
 -0074 396.75
 -0075 401.5
 -0076 406.25
 -0077 411.0
 -0078 415.75
 -0079 420.5
 -0080 425.25
 -0081 430.0
 -0082 434.75
 -0083 439.5
 -0084 444.25
 -0085 449.0
 -0086 453.75
 -0087 458.5
 -0088 463.25
 -0089 468.0
 -0090 472.75
 -0091 477.5
 -0092 482.25
 -0093 487.0
 -0094 491.75
 -0095 496.5
 -0096 501.25
 -0097 506.0
 -0098 510.75
 -0099 515.5
 -0100 520.25

Harris County Appraisal District



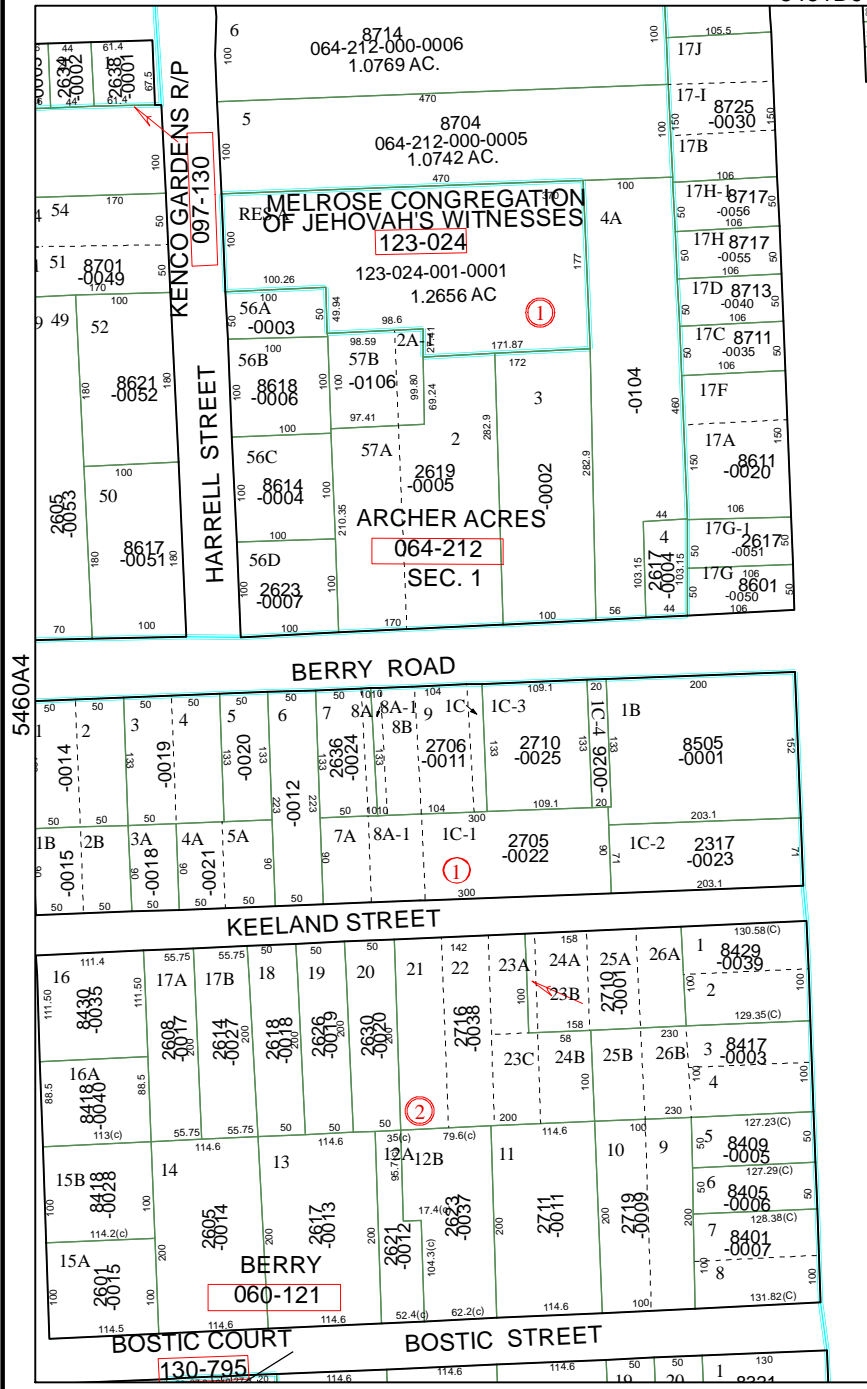
0 100 200
PUBLICATION DATE: 1/25/2012

Geospatial or map data maintained by the Harris County Appraisal District is for informational purposes and may not have been prepared for or be suitable for legal, engineering, or surveying purposes. It does not represent an on-the-ground survey and only represents the approximate location of property boundaries.



FACET 5460B

1	2	3	4
5	6	7	8
9	10	11	12



5460A4

5460B5

