

5461C9

KNIGHT STREET

DOVERSIDE STREET

PLYMOUTH PLACE EXTN;

070-118  
SEC. 1

DUFF LANE

LOUIS M WEBSTER PLAZA

132-619

IRVINGTON BOULEVARD

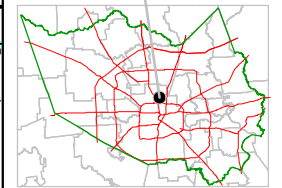
# Harris County Appraisal District



0 100 200  
PUBLICATION DATE:  
9/28/2011

Geospatial or map data maintained by the Harris County Appraisal District is for informational purposes and may not be suitable for legal, engineering, or surveying purposes. It does not represent an on-the-ground survey and only represents the approximate location of property boundaries.

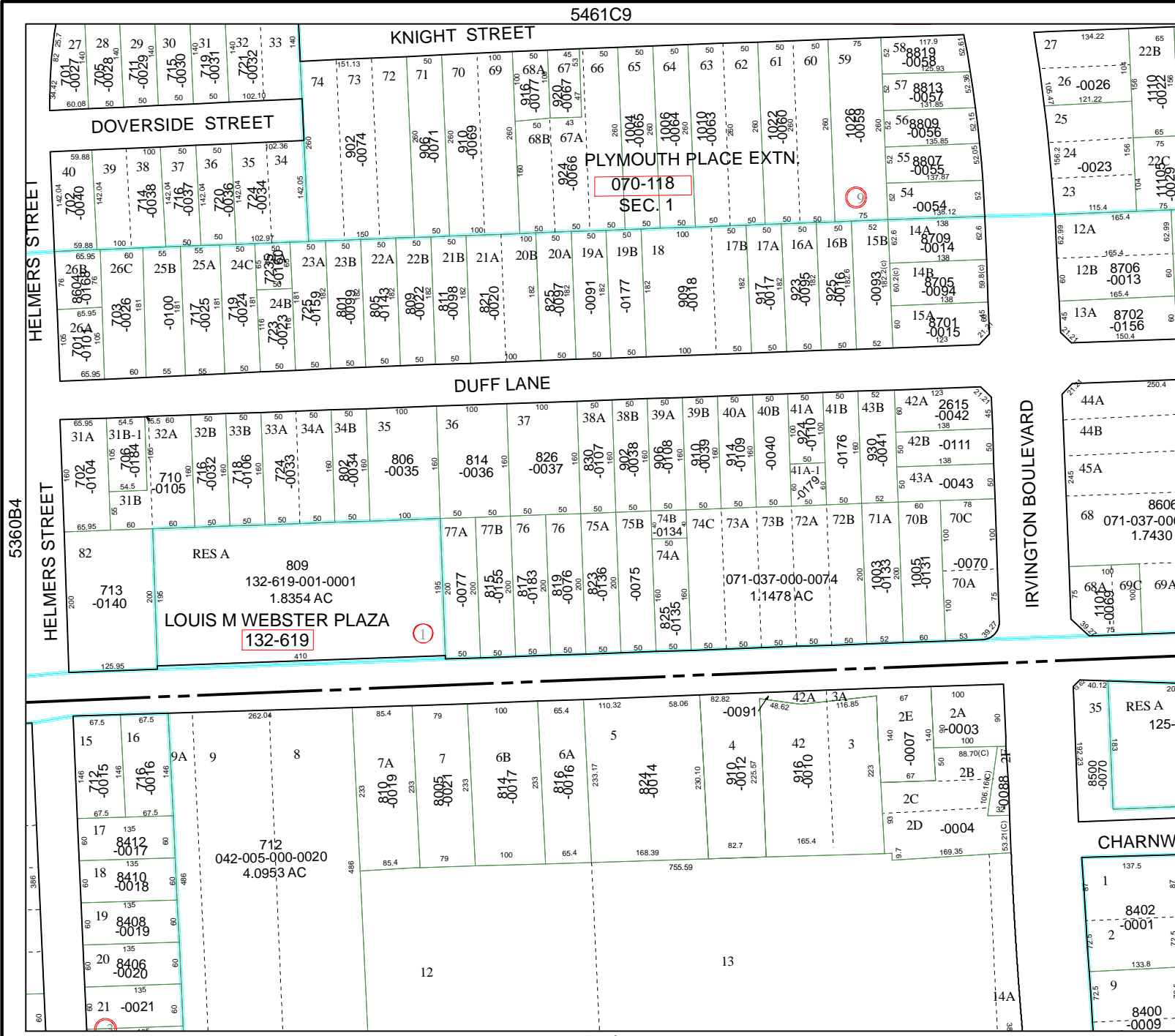
MAP LOCATION



## FACET 5460A

1	2	3	4
5	6	7	8
9	10	11	12

5460A5



5460A2

5460A3

5460A4

5460A5