

Harris County Appraisal District

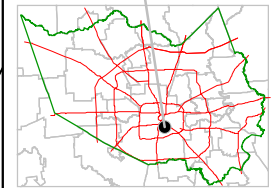


0 100 200
PUBLICATION DATE:
 8/15/2011

Geospatial or map data maintained by the Harris County Appraisal District is for informational purposes and may not have been prepared for or be suitable for legal, engineering, or surveying purposes. It does not represent an on-the-ground survey and only represents the approximate location of property boundaries.

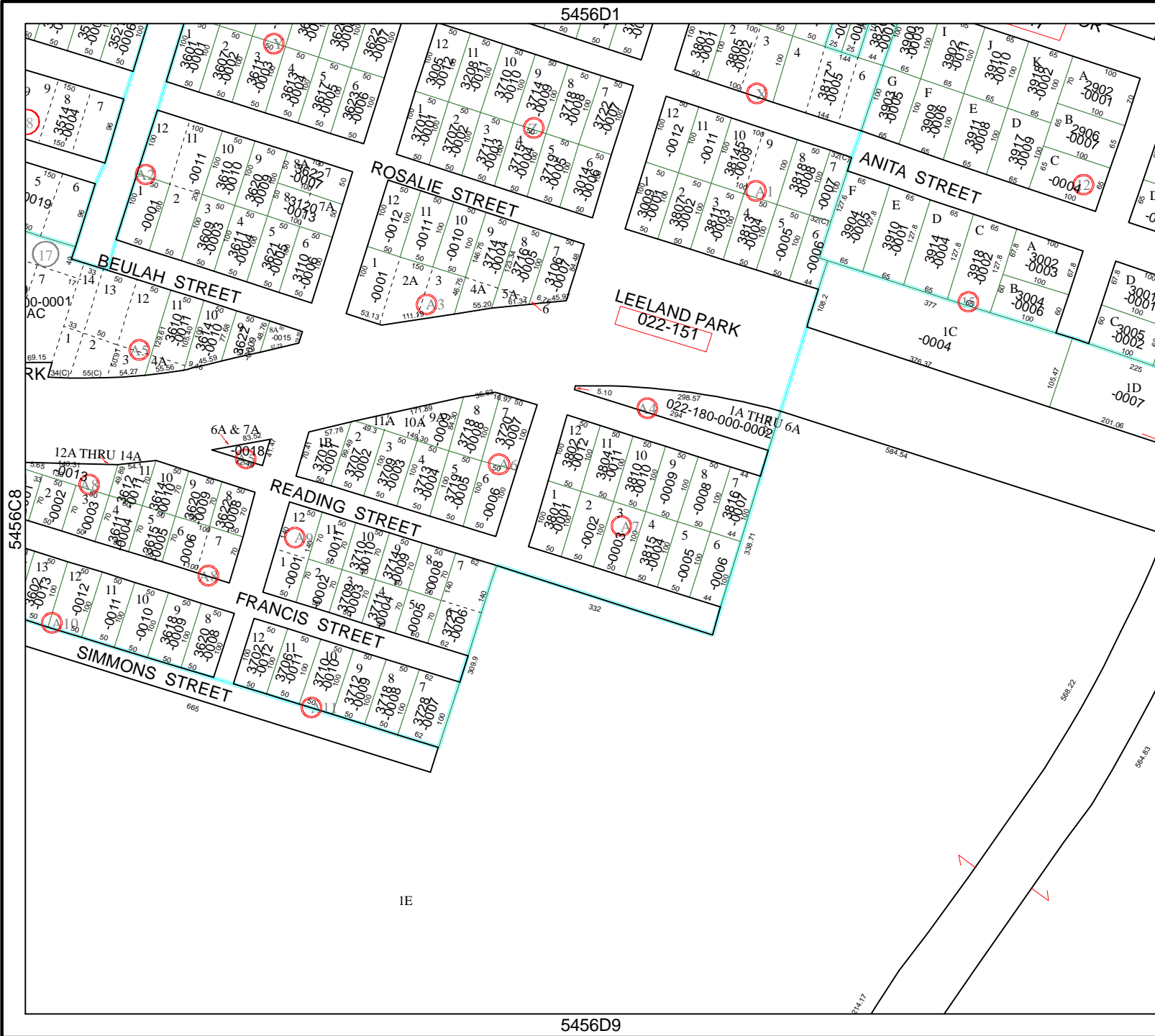


MAP LOCATION



FACET 5456D

1	2	3	4
5	6	7	8
9	10	11	12



5456D1

LEELAND PARK
 022-151

022-180-000-0002
 1A THRU 6A

5456C8

5456D8

5456D9

1E