

5368A7

T.B. UNRESTRICTED RES A
114-569

045-165-000-0027
6.9546 AC

126-477-001-0001
2.7673 AC

FM-1960 TREASCHWIG RET
126-477

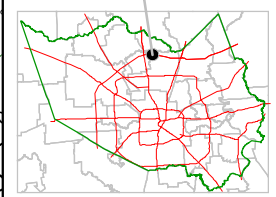
Harris County Appraisal District



0 100 200
PUBLICATION DATE:
8/15/2011

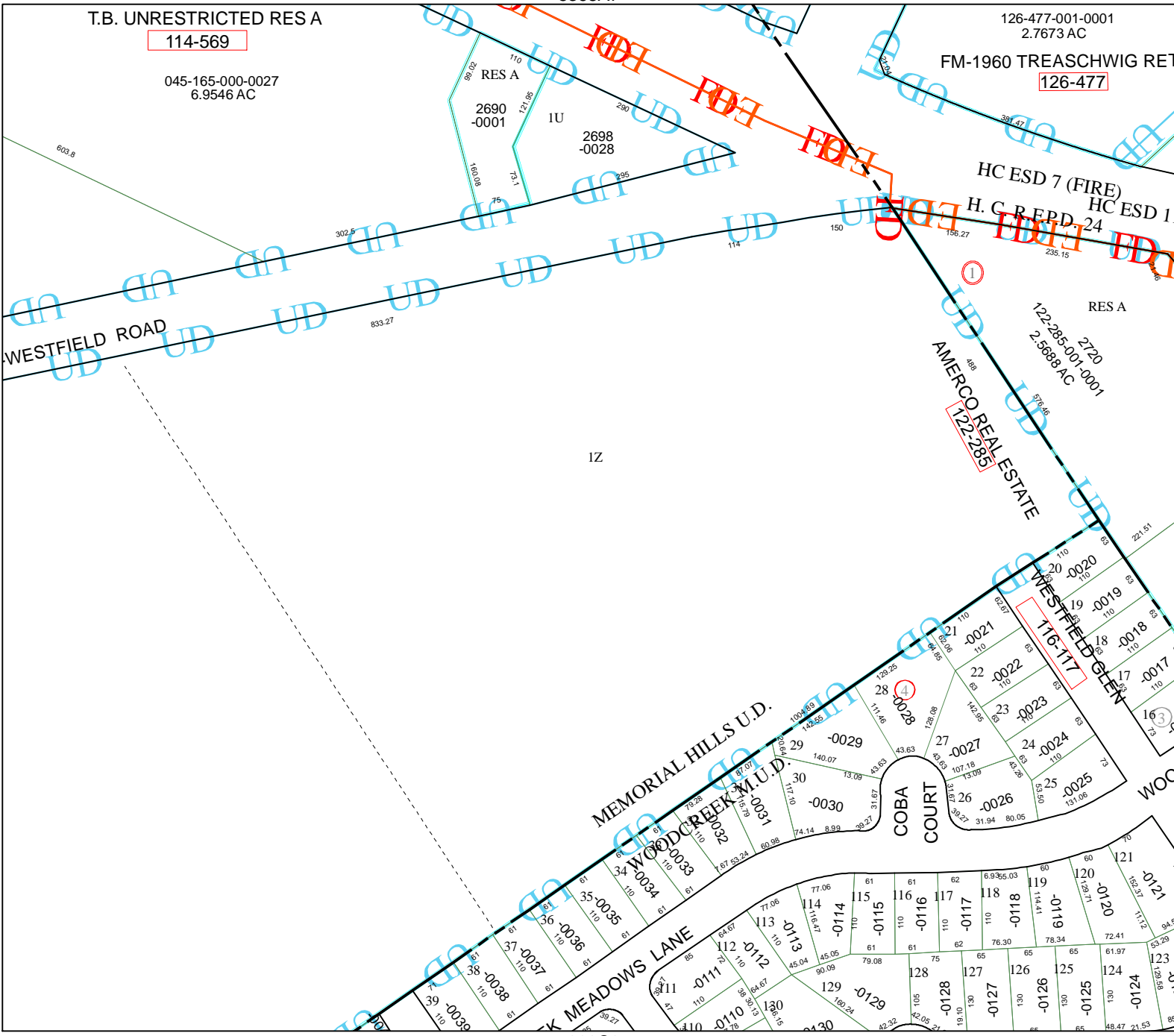
Geospatial or map data maintained by the Harris County Appraisal District is for informational purposes and may not be suitable for legal, engineering, or surveying purposes. It does not represent an on-the-ground survey and only represents the approximate location of property boundaries.

MAP LOCATION



FACET 5368A

1	2	3	4
5	6	7	8
9	10	11	12



5368A10

5368C3