

5367A5

046-083-000-0025
8.2408 AC

NORTHVIEW PARK

116-582

SEC 2

H.C.M.U.D. 221

RES B

116-582-002-0001

16.3340 AC

5267B12

794.72

RICHEY ROAD

740.28

RES G

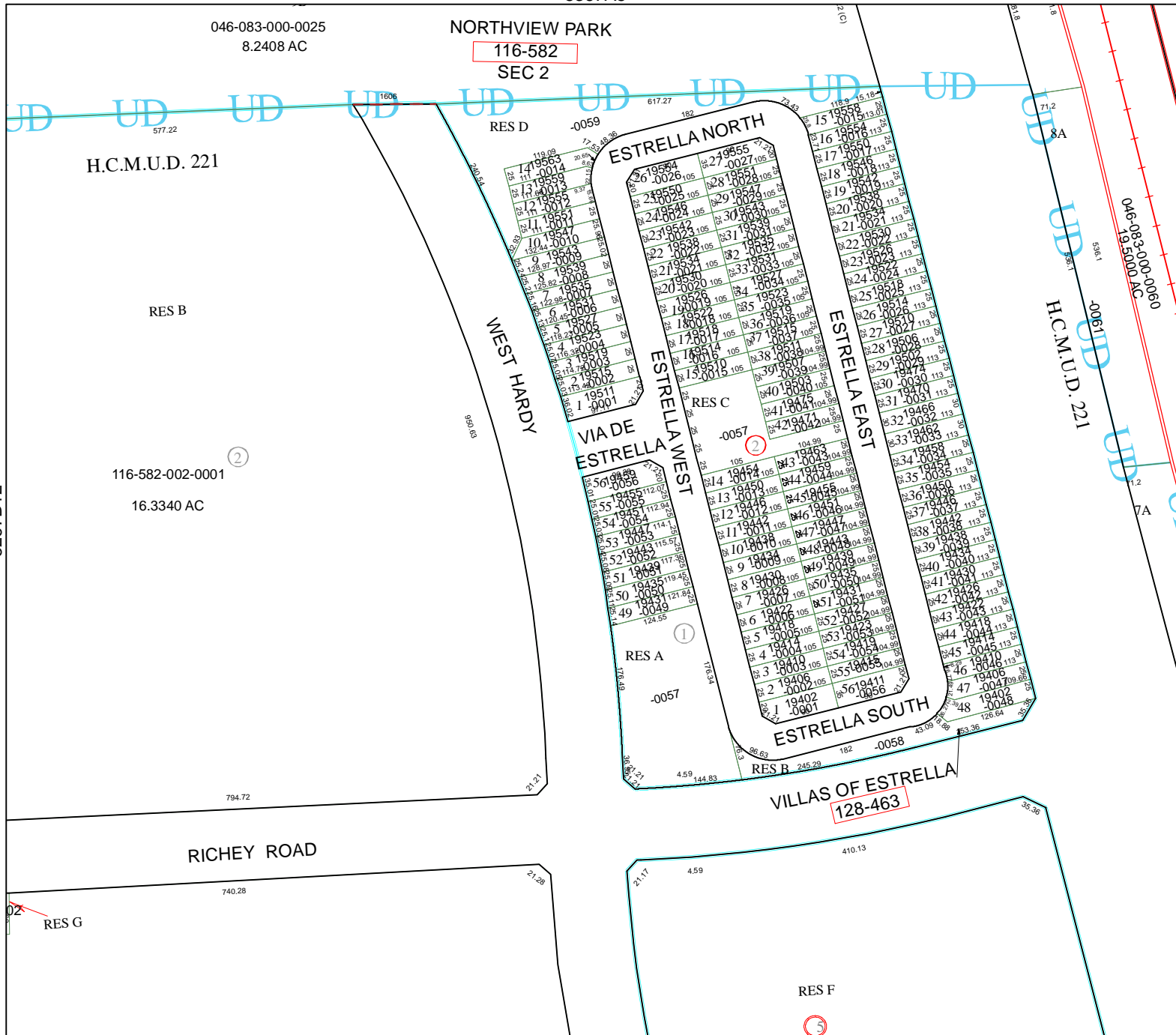
5367C1

4.59

RES F

128-463

VILLAS OF ESTRELLA



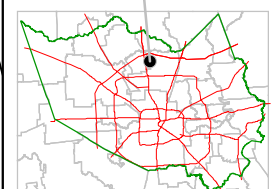
Harris County Appraisal District



0 100 200
PUBLICATION DATE:
 9/1/2011

Geospatial or map data maintained by the Harris County Appraisal District is for informational purposes and may **not** have been prepared for or be suitable for legal, engineering, or surveying purposes. It does **not** represent an on-the-ground survey and only represents the approximate location of property boundaries.

MAP LOCATION



FACET 5367A

1	2	3	4
5	6	7	8
9	10	11	12

5367A10

