

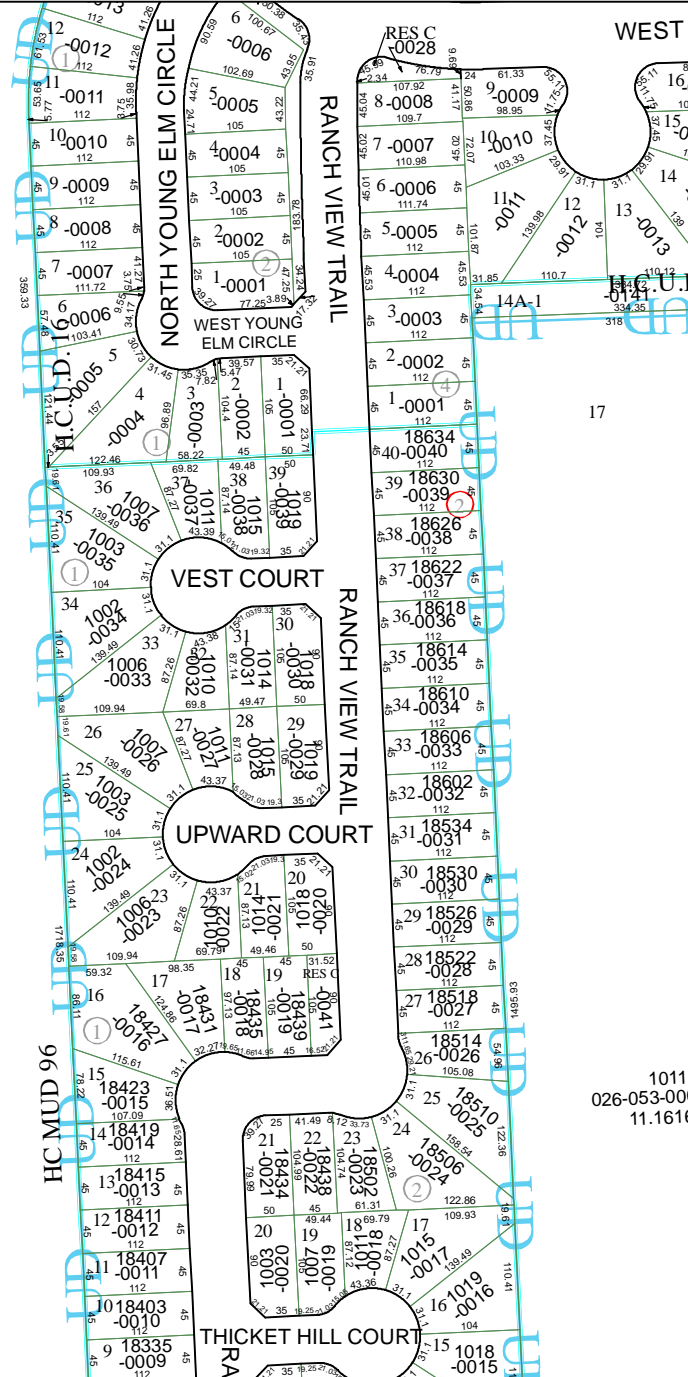
5366A10

RES A

5366C1

HC MUD 96

5366C6



# Harris County Appraisal District



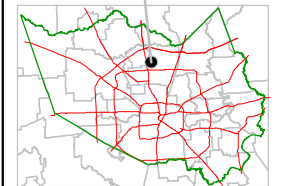
0 100 200

PUBLICATION DATE:  
8/12/2011

Geospatial or map data maintained by the Harris County Appraisal District is for informational purposes and may not have been prepared for or be suitable for legal, engineering, or surveying purposes. It does not represent an on-the-ground survey and only represents the approximate location of property boundaries.



MAP LOCATION



1011  
026-053-000  
11.1616

## FACET 5366C

1	2	3	4
5	6	7	8
9	10	11	12