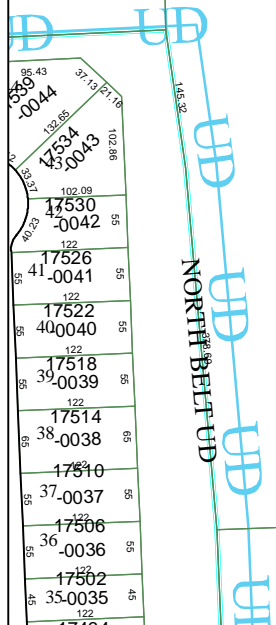


5366B6

10

044-014-000-0100  
96.3320 AC.

5366B9



1780.88

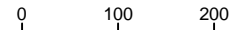
H.C.M.U.D. 271

1373.30(c)

8

5366D2

# Harris County Appraisal District



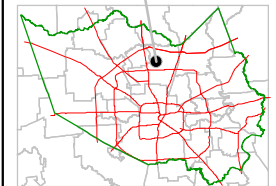
PUBLICATION DATE:  
2/3/2012

Geospatial or map data maintained by the Harris County Appraisal District is for informational purposes and may **not** have been prepared for or be suitable for legal, engineering, or surveying purposes. It does **not** represent an on-the-ground survey and only represents the approximate location of property boundaries.



5366B11

## MAP LOCATION



# FACET 5366B

1	2	3	4
5	6	7	8
9	10	11	12