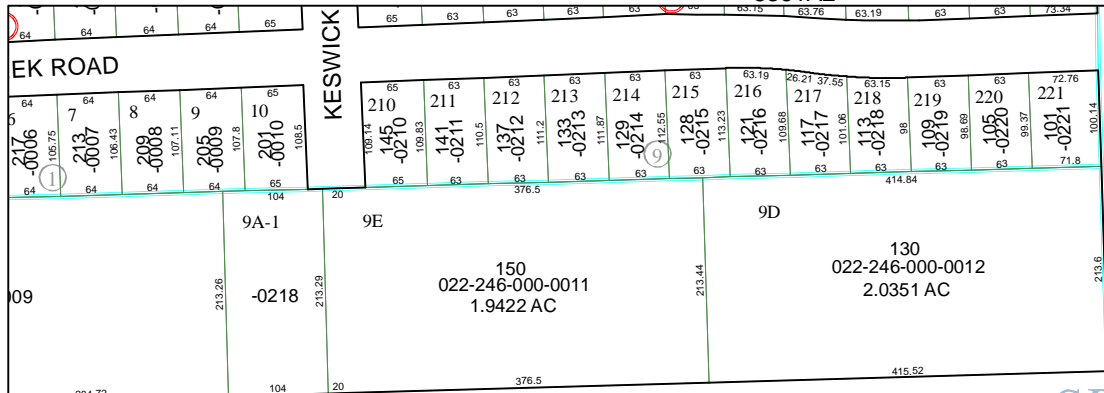
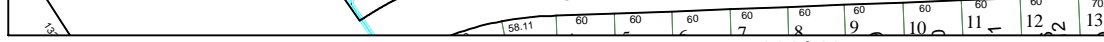
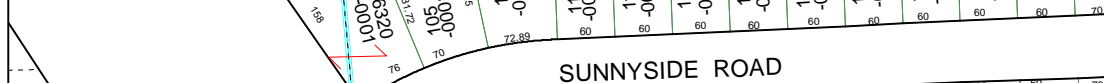
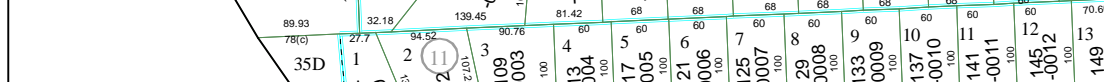
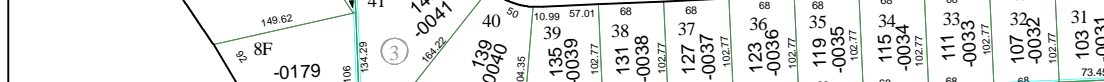
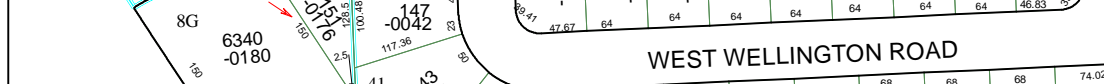
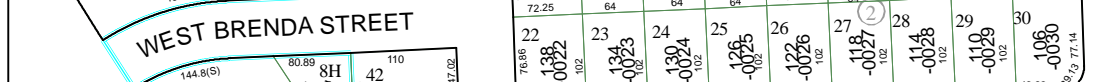
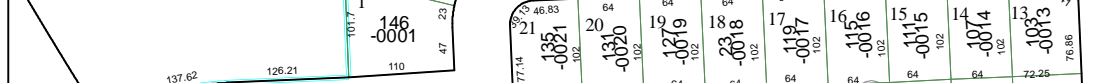
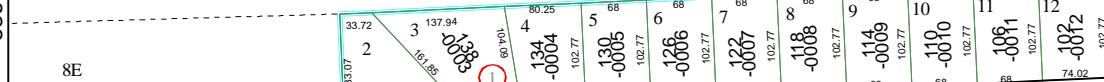
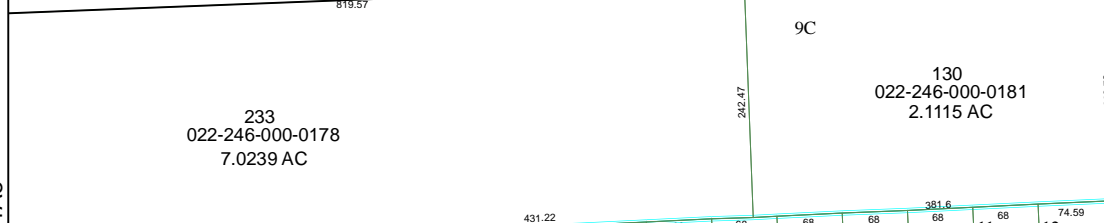


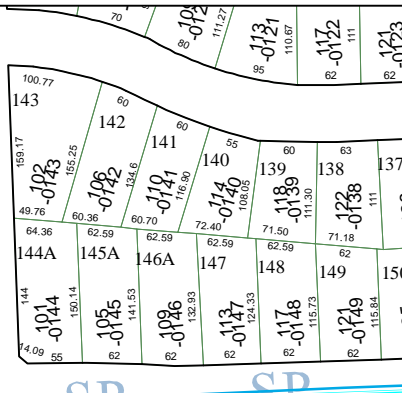
5361A2



SP WEST PARKER ROAD SP SP SP SP SP
 GREATER NORTHSIDE MGMT DIST



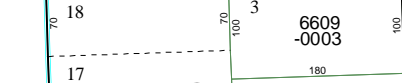
5361A10



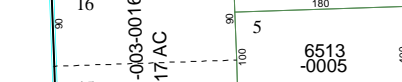
SP SP



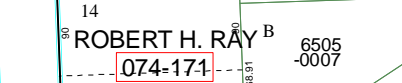
SP SP



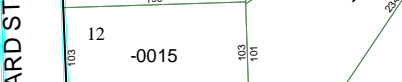
WARD STREET



WARD STREET



WARD STREET



WARD STREET



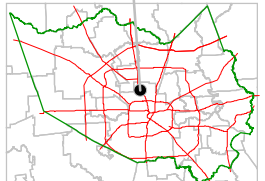
Harris County Appraisal District



0 100 200
 PUBLICATION DATE:
 8/15/2011

Geospatial or map data maintained by the Harris County Appraisal District is for informational purposes and may not have been prepared for or be suitable for legal, engineering, or surveying purposes. It does not represent an on-the-ground survey and only represents the approximate location of property boundaries.

MAP LOCATION



FACET 5361A

| | | | |
|---|----|----|----|
| 1 | 2 | 3 | 4 |
| 5 | 6 | 7 | 8 |
| 9 | 10 | 11 | 12 |

5361A5

5361A7



026-128
 4.06