

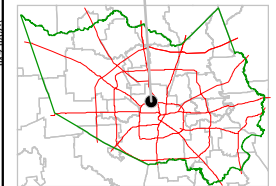
Harris County Appraisal District



0 100 200
PUBLICATION DATE:
 8/15/2011

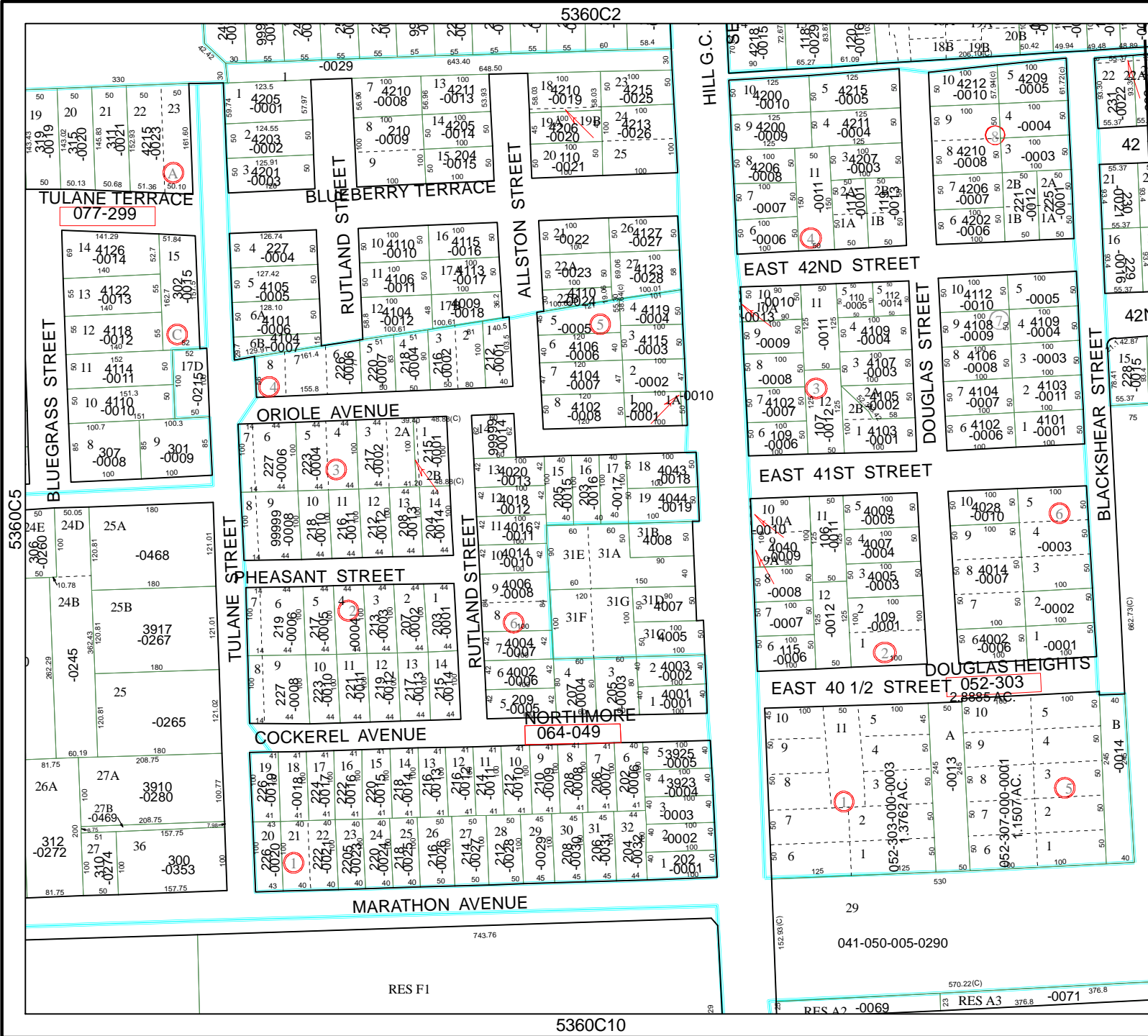
Geospatial or map data maintained by the Harris County Appraisal District is for informational purposes and may not be prepared for or be suitable for legal, engineering, or surveying purposes. It does not represent an on-the-ground survey and only represents the approximate location of property boundaries.

MAP LOCATION



FACET 5360C

1	2	3	4
5	6	7	8
9	10	11	12



5360C10

041-050-005-0290

RES A2 -0069

RES A3 376.8 -0071 376.8

RES F1