

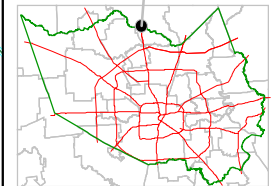
Harris County Appraisal District



0 100 200
 PUBLICATION DATE:
 8/15/2011

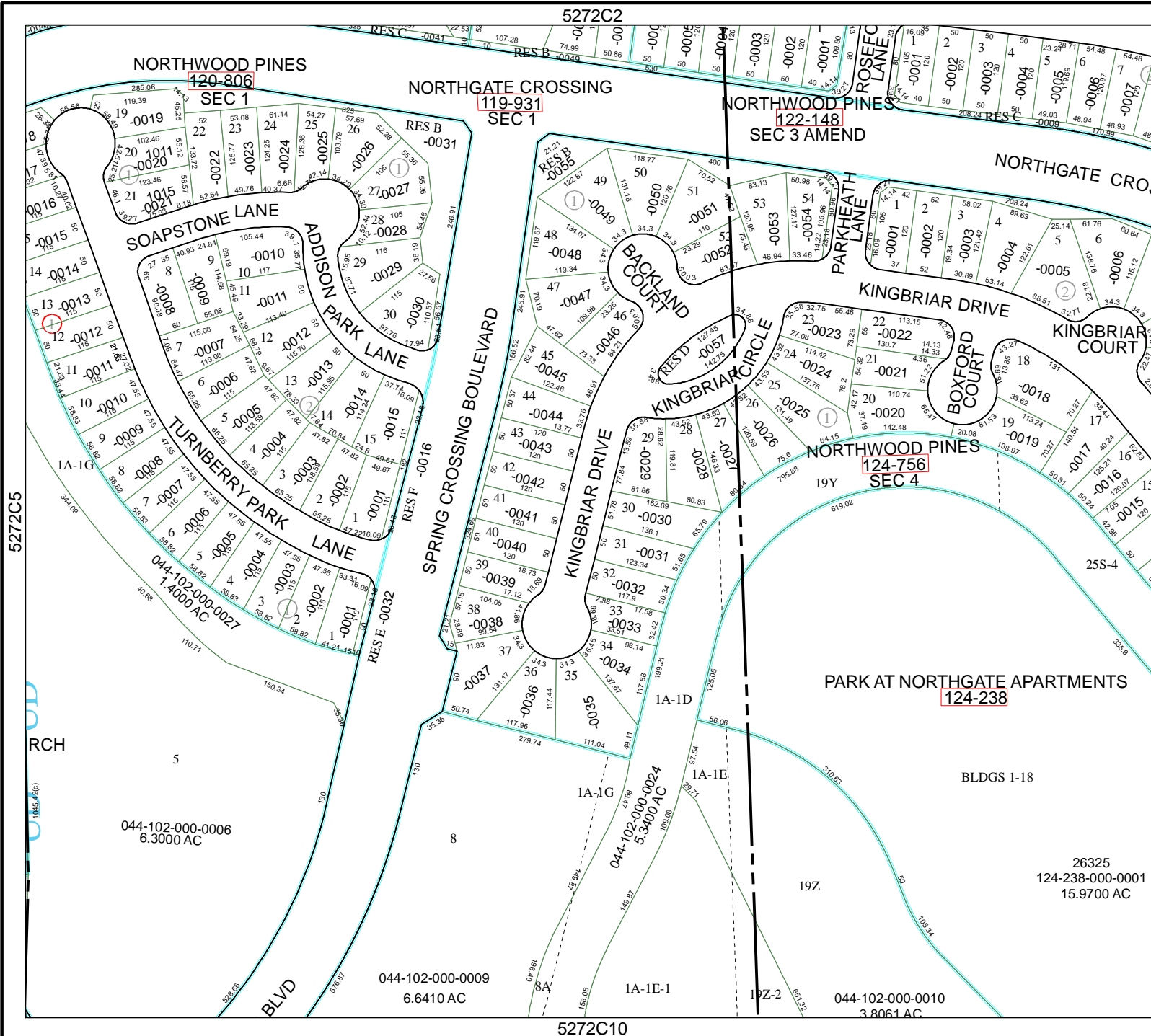
Geospatial or map data maintained by the Harris County Appraisal District is for informational purposes and may not have been prepared for or be suitable for legal, engineering, or surveying purposes. It does not represent an on-the-ground survey and only represents the approximate location of property boundaries.

MAP LOCATION



FACET 5272C

1	2	3	4
5	6	7	8
9	10	11	12



5272C10

5272C7

5272C5

5272C2

26325
 124-238-000-001
 15.9700 AC

19Z

PARK AT NORTHGATE APARTMENTS
 124-238

NORTHWOOD PINES
 SEC 4
 124-756

NORTHWOOD PINES
 SEC 3 AMEND
 122-148

NORTHGATE CROSSING
 SEC 1
 119-931

NORTHWOOD PINES
 SEC 1
 120-806

044-102-000-0006
 6.3000 AC

044-102-000-0009
 6.6410 AC

044-102-000-0024
 5.3400 AC

044-102-000-0010
 3.8061 AC

RCH

5

8

19Y

25S-4

1A-1G

1A-1E

1A-1E-1

1DZ-2

