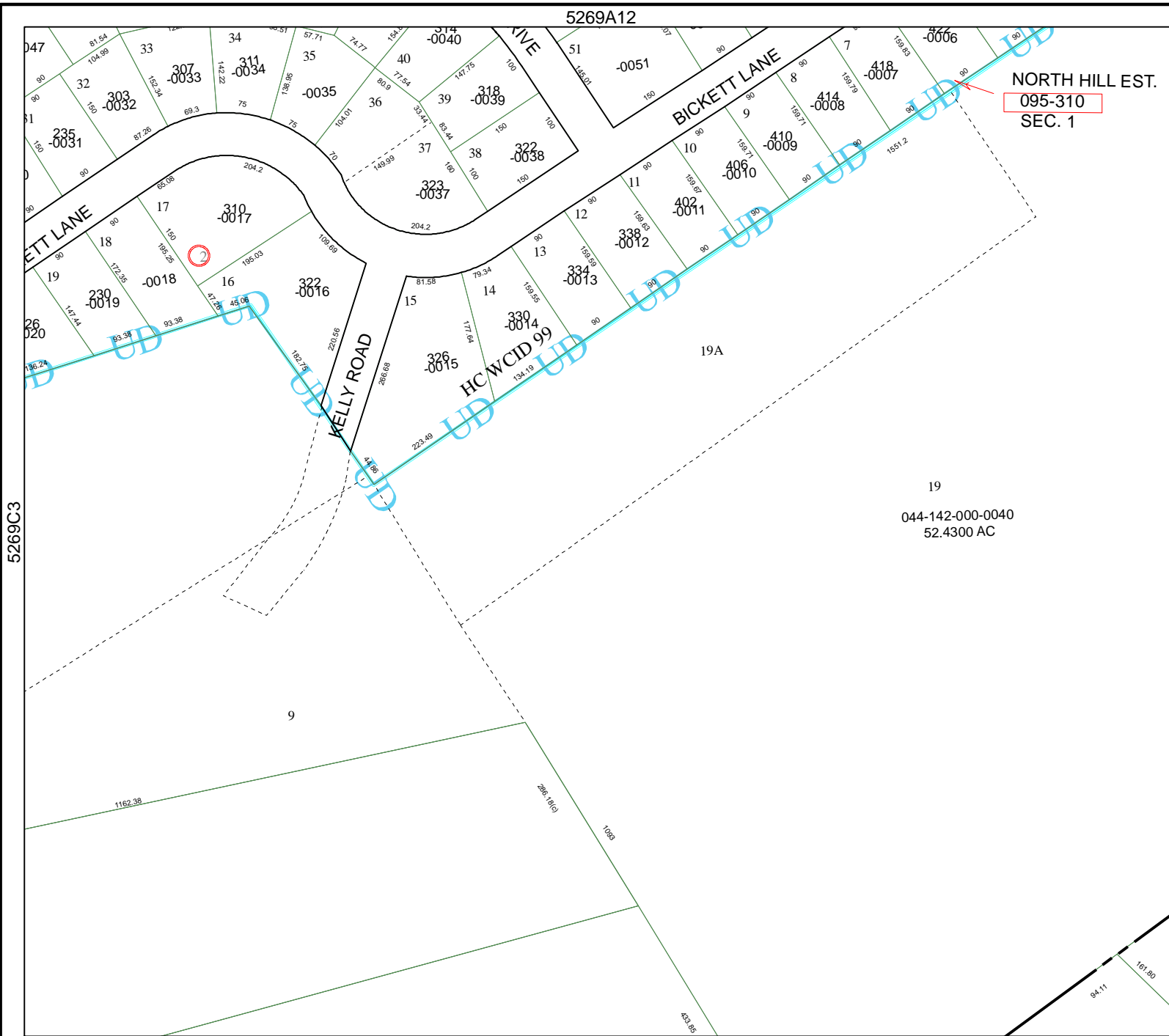


5269A12

5269C8



NORTH HILL EST.

095-310
SEC. 1

5269C3

Harris County Appraisal District



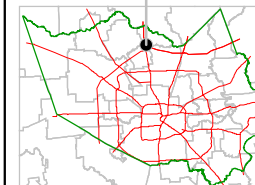
0 100 200

PUBLICATION DATE:
8/15/2011

Geospatial or map data maintained by the Harris County Appraisal District is for informational purposes and may **not** have been prepared for or be suitable for legal, engineering, or surveying purposes. It does **not** represent an on-the-ground survey and only represents the approximate location of property boundaries.



MAP LOCATION



5269D1

FACET 5269C

1	2	3	4
5	6	7	8
9	10	11	12

19
044-142-000-0040
52.4300 AC

94.11 161.80