

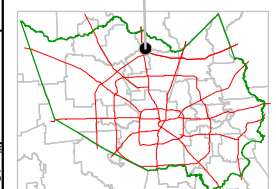
Harris County Appraisal District



0 100 200
PUBLICATION DATE:
 9/1/2011

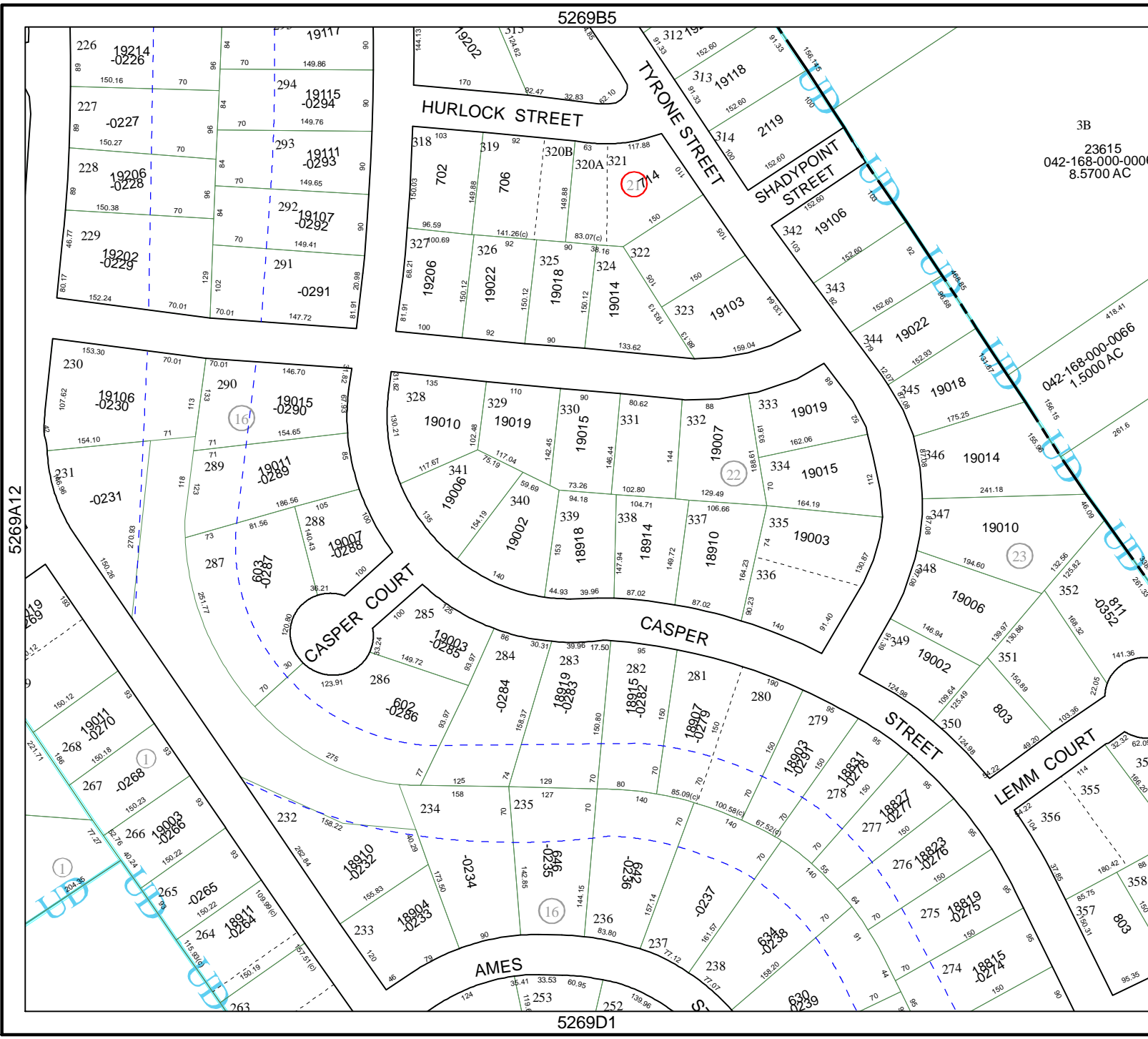
Geospatial or map data maintained by the Harris County Appraisal District is for informational purposes and may **not** have been prepared for or be suitable for legal, engineering, or surveying purposes. It does **not** represent an on-the-ground survey and only represents the approximate location of property boundaries.

MAP LOCATION



FACET 5269B

1	2	3	4
5	6	7	8
9	10	11	12



3B
 23615
 042-168-000-0006
 8.5700 AC

042-168-000-0066
 1.5000 AC

5269A12

5269B10

5269B5

5269D1