

5268D8

RES A

126-833-004-0037
18.3406 AC

ERINWILDE
116-200
SEC. 1

IMPERIAL TRACE
126-833
SEC 1

5267B4

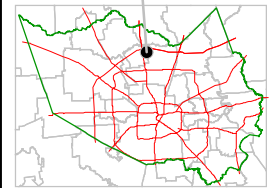
Harris County Appraisal District



0 100 200
PUBLICATION DATE:
6/13/2011

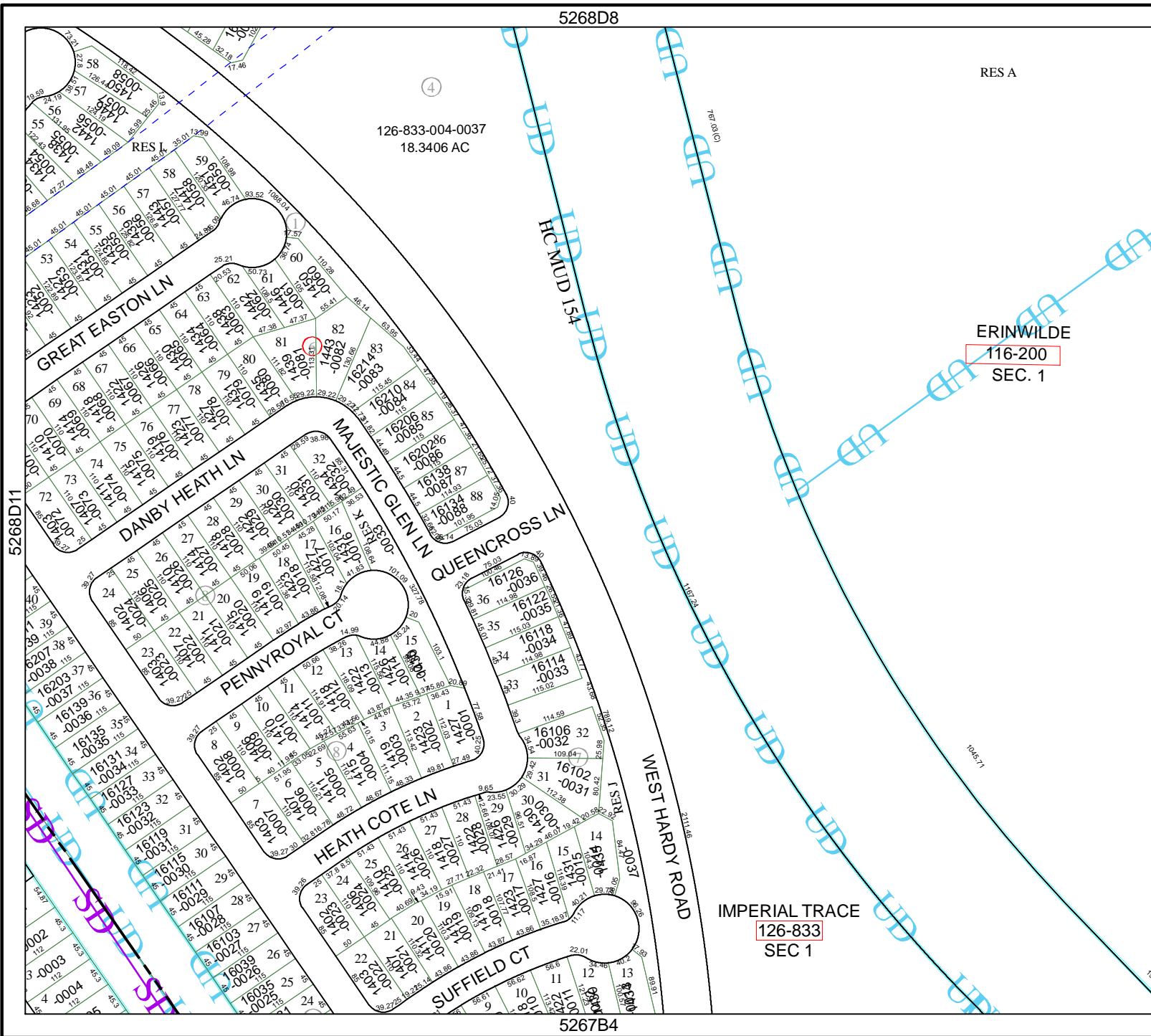
Geospatial or map data maintained by the Harris County Appraisal District is for informational purposes and may not be suitable for legal, engineering, or surveying purposes. It does not represent an on-the-ground survey and only represents the approximate location of property boundaries.

MAP LOCATION



FACET 5268D

| | | | |
|---|----|----|----|
| 1 | 2 | 3 | 4 |
| 5 | 6 | 7 | 8 |
| 9 | 10 | 11 | 12 |



5268D11

5368C9

