

5267B9

Harris County Appraisal District



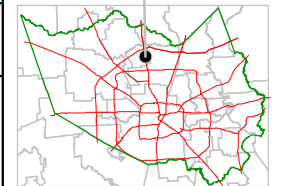
0 100 200

PUBLICATION DATE:
10/7/2011

Geospatial or map data maintained by the Harris County Appraisal District is for informational purposes and may **not** have been prepared for or be suitable for legal, engineering, or surveying purposes. It does **not** represent an on-the-ground survey and only represents the approximate location of property boundaries.



MAP LOCATION



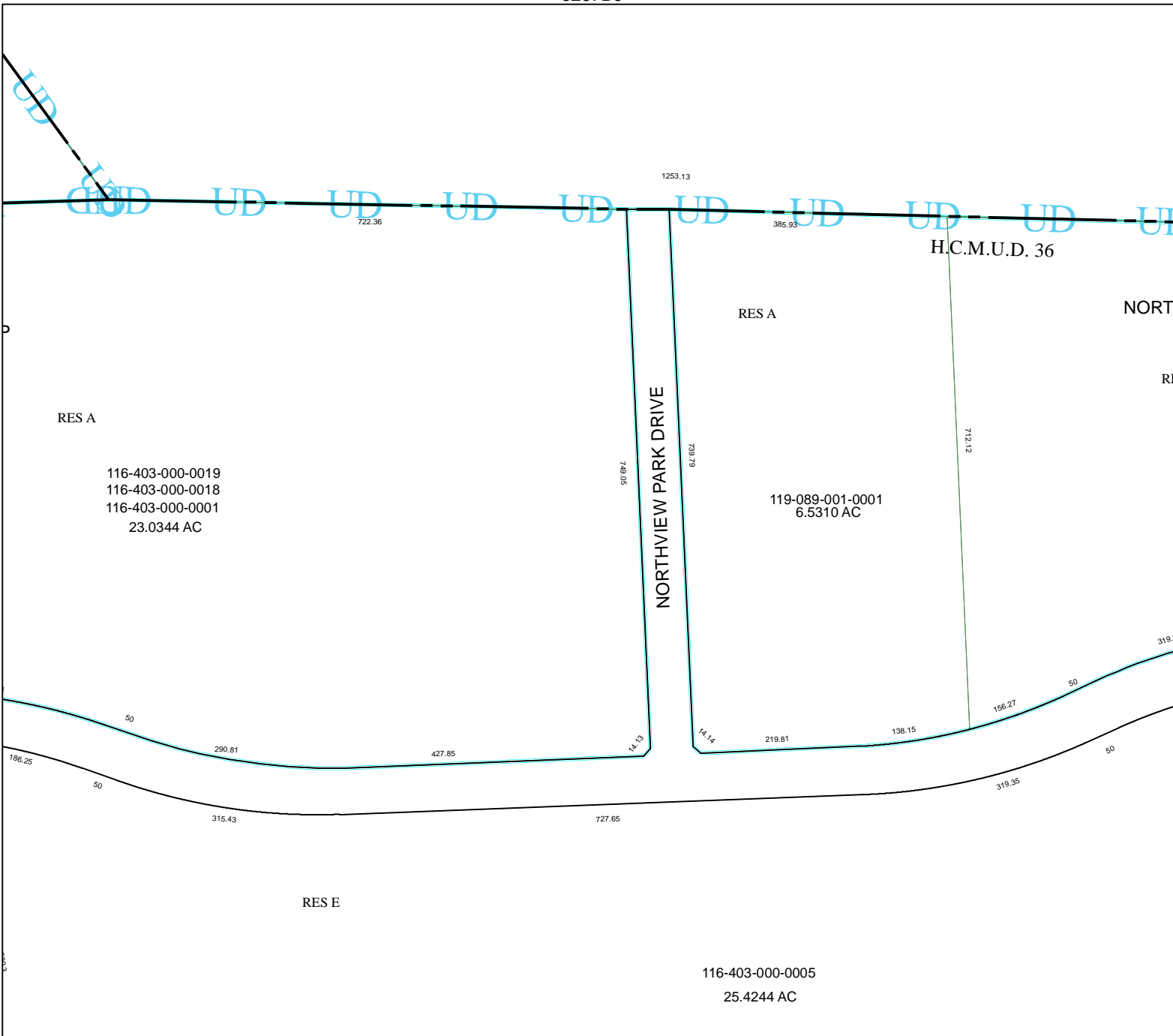
FACET 5267D

1	2	3	4
5	6	7	8
9	10	11	12

5267C4

5267D2

5267D5



RES A

116-403-000-0019
116-403-000-0018
116-403-000-0001
23.0344 AC

RES A

119-089-001-0001
6.5310 AC

RES E

116-403-000-0005
25.4244 AC

H.C.M.U.D. 36

NORTHVIEW PARK DRIVE

NORTH

RE

186.25
50
315.43
290.81
427.85
14.73

727.65

1253.13

385.93

507.84

739.79

712.12

14.14

219.81

138.15

156.27

50

319.35

50

319.35

0

5.00

UD

UD

UD

UD

UD

UD

UD

UD

UD

UD

UD

UD

UD