

5266D5

RANKIN PLAZA  
118-901

RES A2  
118-901-001-0003  
2.0888 AC

SAXONY PLACE  
124-383

RES F4-A  
13401  
114-585-000-0019  
5.9790 AC

RES F5

RES F4  
-0012

RES F

114-585-000-0001  
11.6307 AC

RES F8

114-585-000-0021  
10.1300 AC

NORTHBOROUGH  
114-585  
SEC 2

5265B1

# Harris County Appraisal District

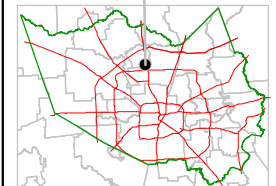


0 100 200

PUBLICATION DATE:  
2/6/2012

Geospatial or map data maintained by the Harris County Appraisal District is for informational purposes and may not have been prepared for or be suitable for legal, engineering, or surveying purposes. It does not represent an on-the-ground survey and only represents the approximate location of property boundaries.

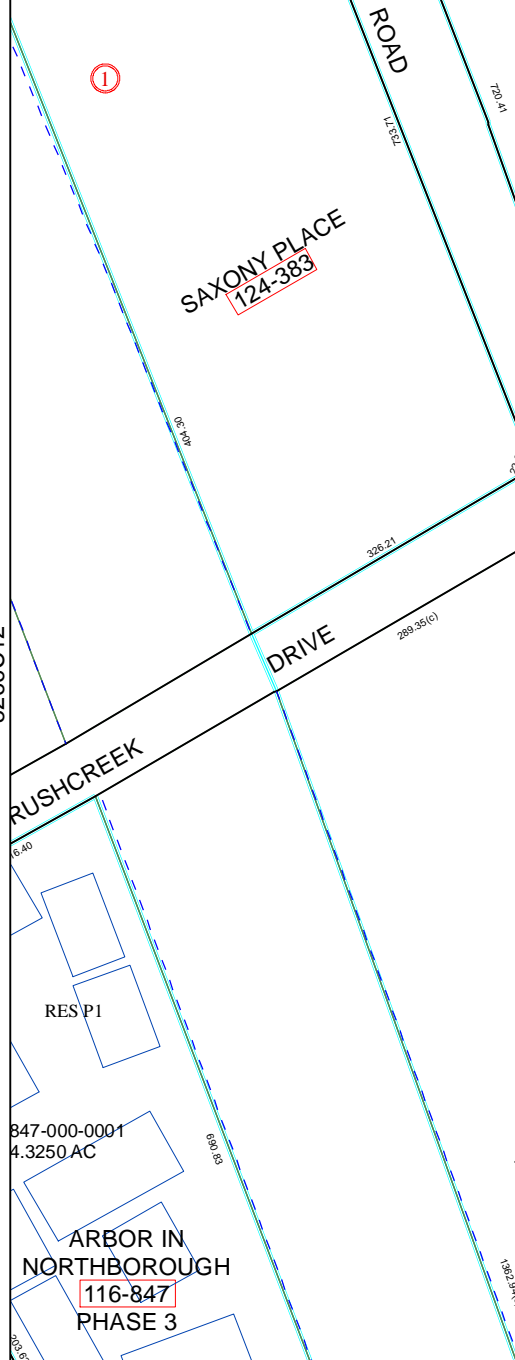
MAP LOCATION



## FACET 5266D

1	2	3	4
5	6	7	8
9	10	11	12

5266C12



5266D10