

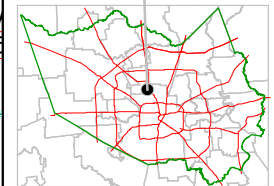
# Harris County Appraisal District



0 100 200  
**PUBLICATION DATE:**  
 8/15/2011

Geospatial or map data maintained by the Harris County Appraisal District is for informational purposes and may not be prepared for or be suitable for legal, engineering, or surveying purposes. It does not represent an on-the-ground survey and only represents the approximate location of property boundaries.

### MAP LOCATION



# FACET 5262D

1	2	3	4
5	6	7	8
9	10	11	12

5262D7

APARTMENTS R/P 1  
 9-469

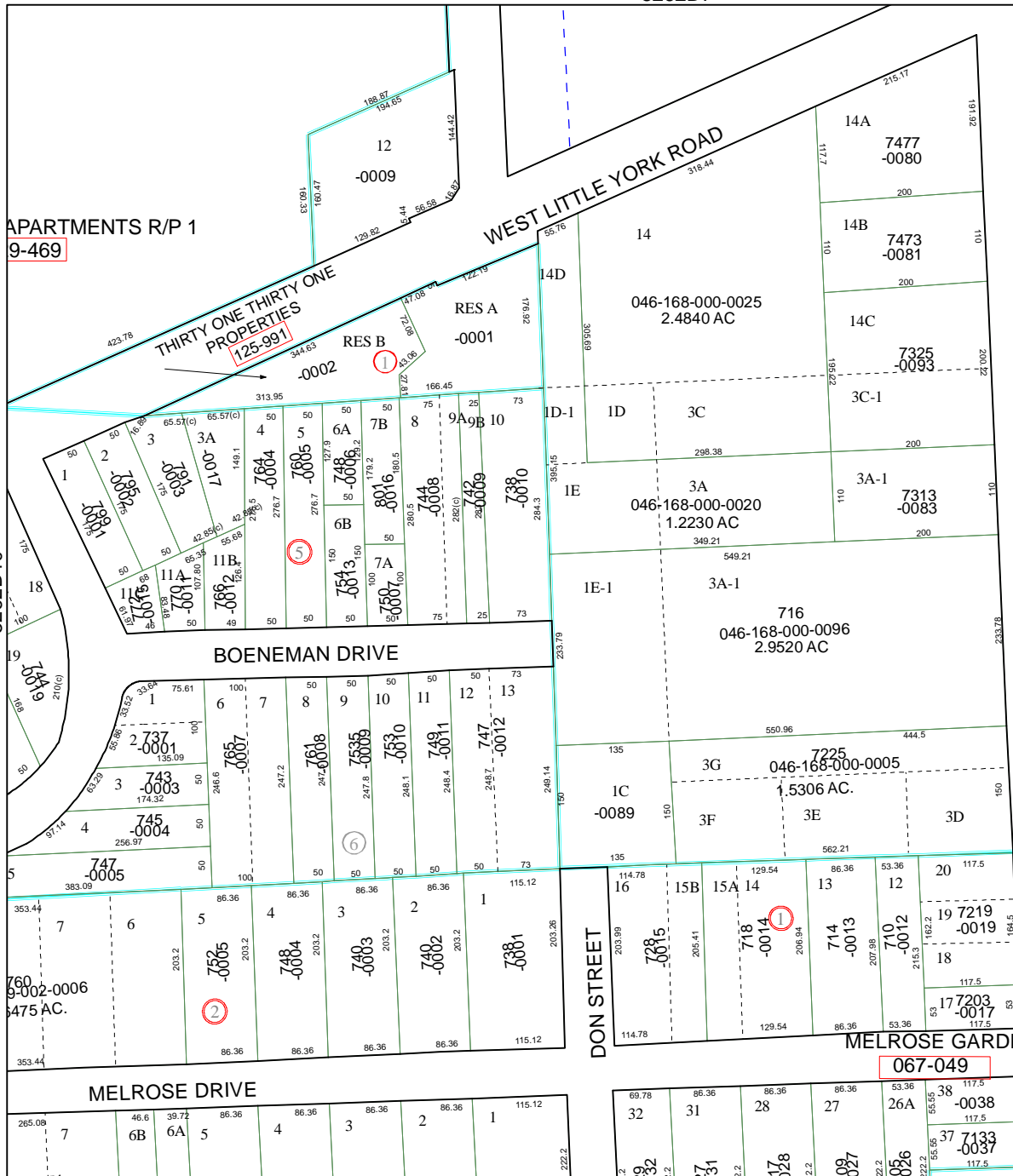
THIRTY ONE THIRTY ONE PROPERTIES  
 125-991

WEST LITTLE YORK ROAD

NORTH SHEPHERD DRIVE

5262D10

5262D12



MAYFAIR PARK  
 125-124

JOHN O. SUBIK  
 072-098

HOUSTON DRIVE  
 124-258

DARLAND PARTNERS RESERVE  
 129-385

MELROSE GARDENS  
 067-049

SE GARDEN R/P NO 2  
 7-049

5261B3