

# Harris County Appraisal District

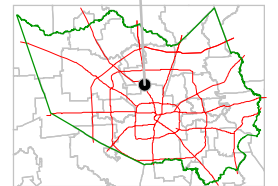


0 100 200  
**PUBLICATION DATE:**  
 8/15/2011

Geospatial or map data maintained by the Harris County Appraisal District is for informational purposes and may not have been prepared for or be suitable for legal, engineering, or surveying purposes. It does not represent an on-the-ground survey and only represents the approximate location of property boundaries.



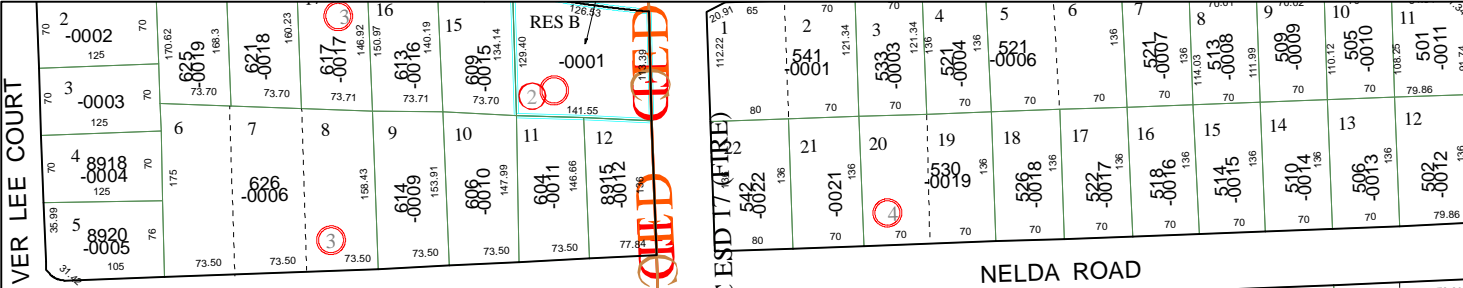
## MAP LOCATION



# FACET 5262B

|   |    |    |    |
|---|----|----|----|
| 1 | 2  | 3  | 4  |
| 5 | 6  | 7  | 8  |
| 9 | 10 | 11 | 12 |

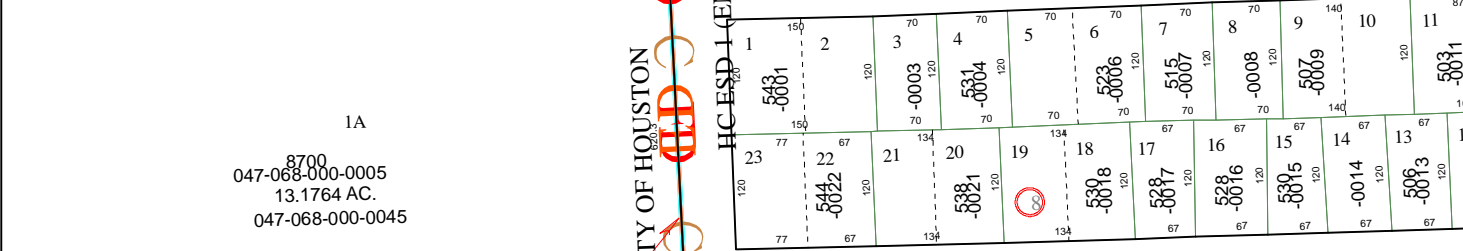
5263D12



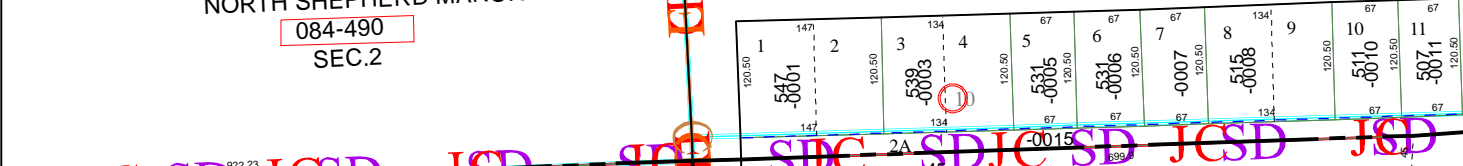
NELDA ROAD



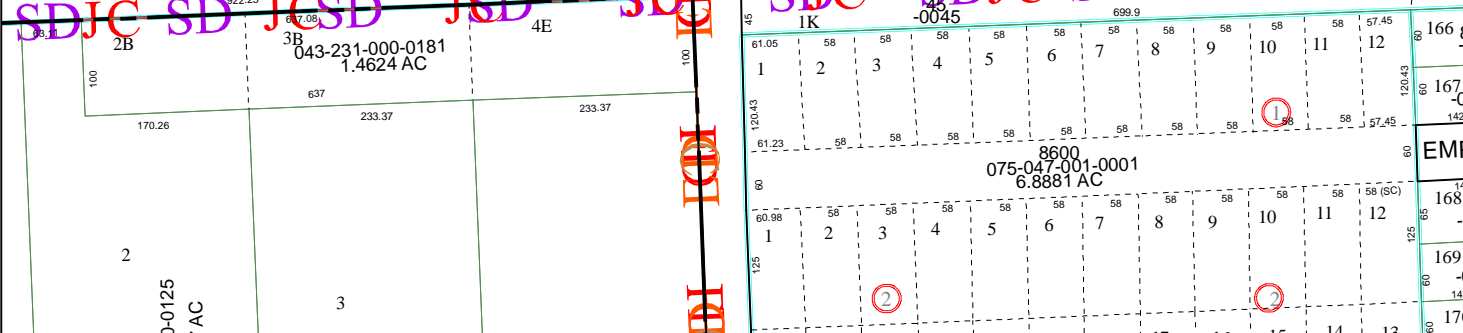
MIRIANNE STREET



BERTRAND STREET



075-047-001-0001  
 6.8881 AC



5262B8

5262B3

5362A1

CITY OF HOUSTON

1A  
 8700  
 047-068-000-0005  
 13.1764 AC.  
 047-068-000-0045

NORTH SHEPHERD MANOR  
 084-490  
 SEC. 2

D-0125  
 1 AC

043-231-000-0181  
 1.4624 AC