

5263D11

RES A1

129-229-001-0002
1.1710 AC

129-229-001-0001
8.3550 AC

GULF BANK COMMERCIAL CENTER
129-229

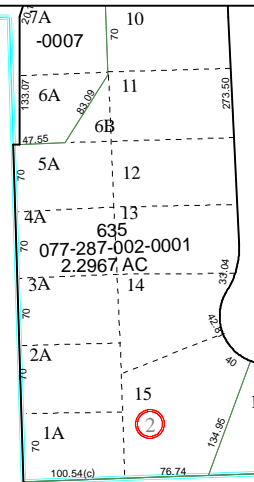
047-068-000-0001
2.9468 AC

IB
047-068-000-0010
1.7400 AC.

RES B
HALLIEJO
-0001
125-906

5262B7

I-45



Harris County Appraisal District



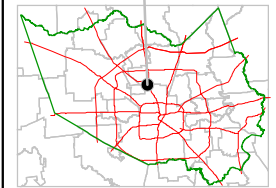
0 100 200

PUBLICATION DATE:
8/15/2011

Geospatial or map data maintained by the Harris County Appraisal District is for informational purposes and may **not** have been prepared for or be suitable for legal, engineering, or surveying purposes. It does **not** represent an on-the-ground survey and only represents the approximate location of property boundaries.

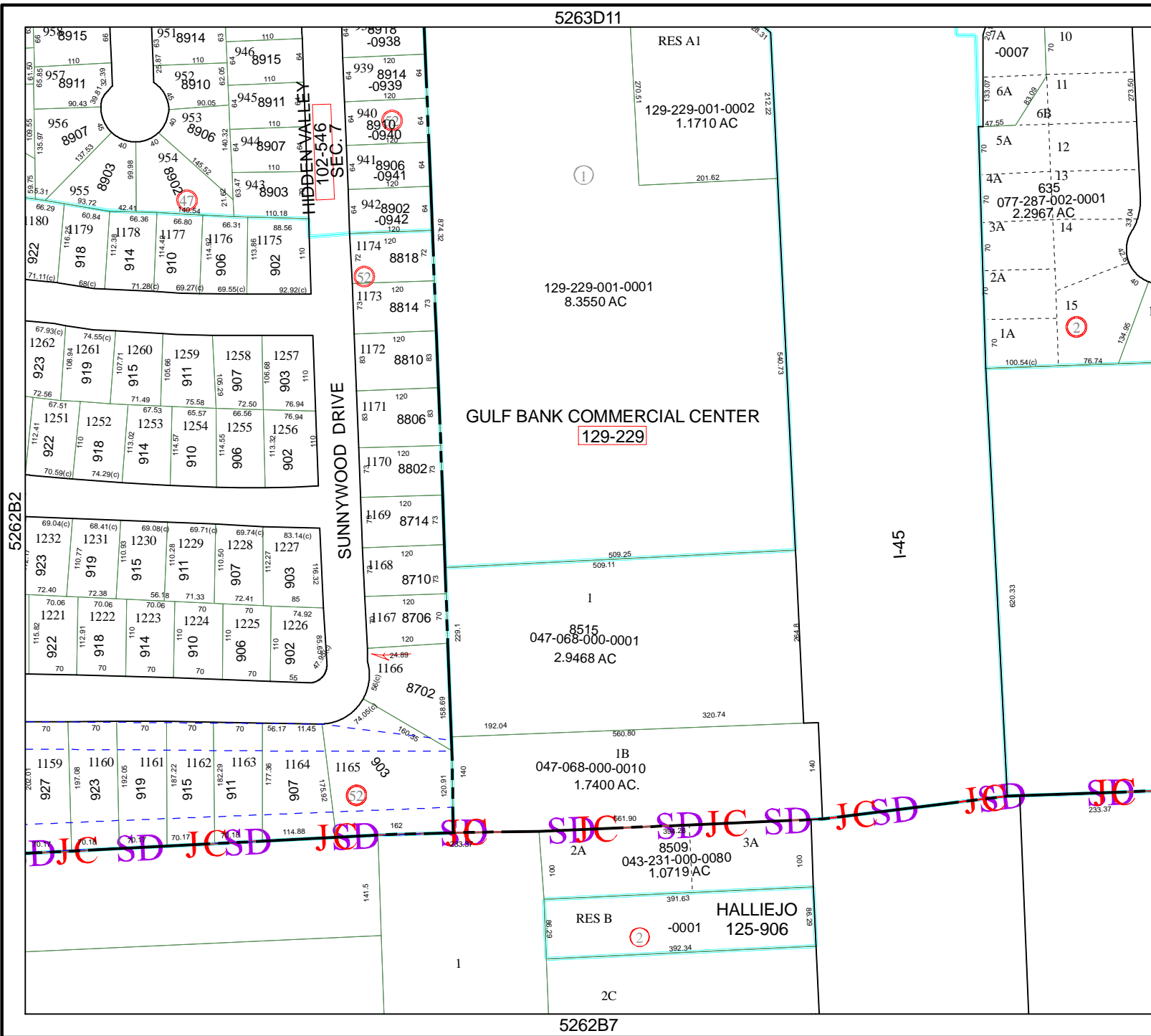


MAP LOCATION



FACET 5262B

1	2	3	4
5	6	7	8
9	10	11	12



5262B2

5262B4

