

5261C5

RES A

TAINS AT TIDWELL RECREATION CENTER  
123-630

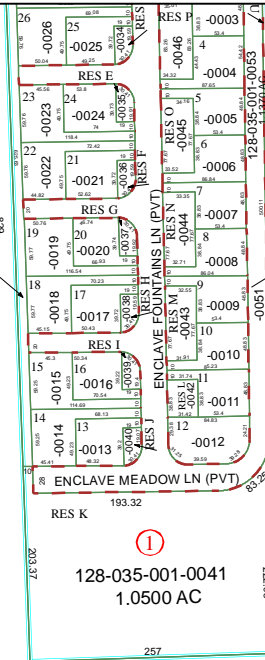
8B

043-210-000-0059  
10.4126 AC

123-124-000-0001  
22.7796 AC

FOUNTAINS AT TIDWELL APTS.  
123-124

ENCLAVE AT FOUNTAIN  
128-035



043-210-000-0155  
3.0000 AC

043-210-000-0371  
2.0000 AC.

043-210-000-0370  
2.0000 AC.

043-210-000-0066  
5.2892 AC.

039-215-001-0017

039-215-001-0019  
1.0000 AC.

039-215-001-0020  
1.0295 AC.

039-215-001-0021  
1.2487 AC.

22C

22A

039-215-001-0022  
1.4583 AC.

039-215-001-0024  
1.4583 AC.

039-215-001-0025  
1.0000 AC.

039-215-001-0026  
1.0000 AC.

039-215-001-0027  
2.5000 AC.

039-215-001-0028  
2.5000 AC.

039-215-001-0030  
1.0000 AC.

5260A1

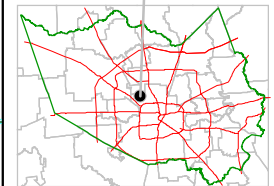
# Harris County Appraisal District



0 100 200  
PUBLICATION DATE:  
12/19/2011

Geospatial or map data maintained by the Harris County Appraisal District is for informational purposes and may not have been prepared for or be suitable for legal, engineering, or surveying purposes. It does not represent an on-the-ground survey and only represents the approximate location of property boundaries.

## MAP LOCATION



# FACET 5261C

1	2	3	4
5	6	7	8
9	10	11	12

5161D12

5261C10

