

Harris County Appraisal District

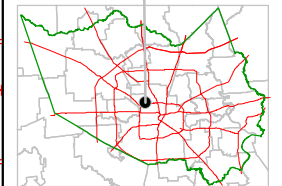


0 100 200

PUBLICATION DATE:
12/31/2011

Geospatial or map data maintained by the Harris County Appraisal District is for informational purposes and may not have been prepared for or be suitable for legal, engineering, or surveying purposes. It does not represent an on-the-ground survey and only represents the approximate location of property boundaries.

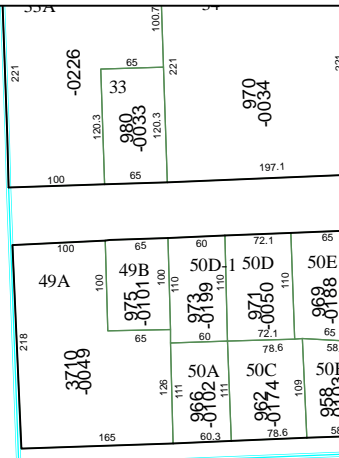
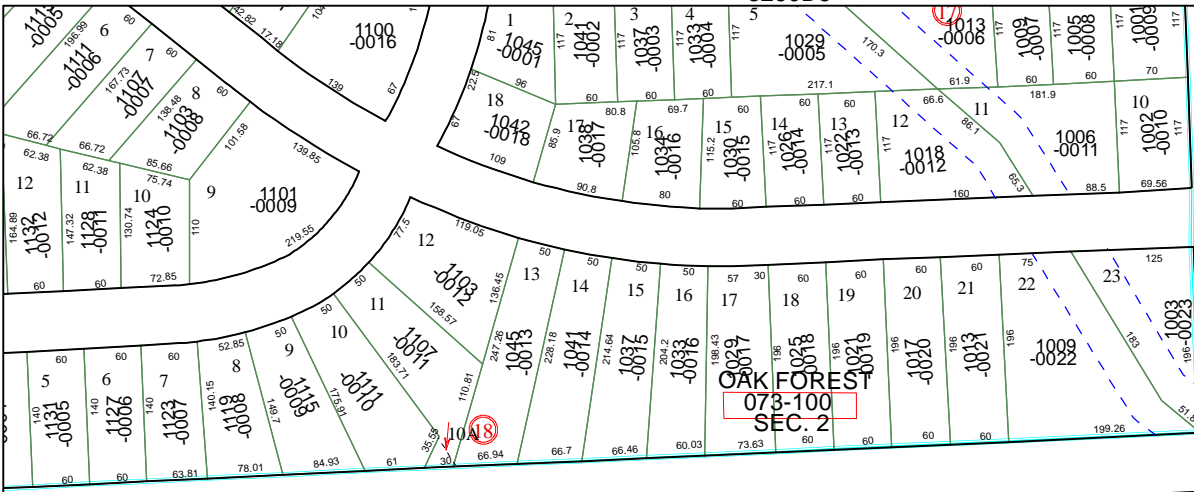
MAP LOCATION



FACET 5260D

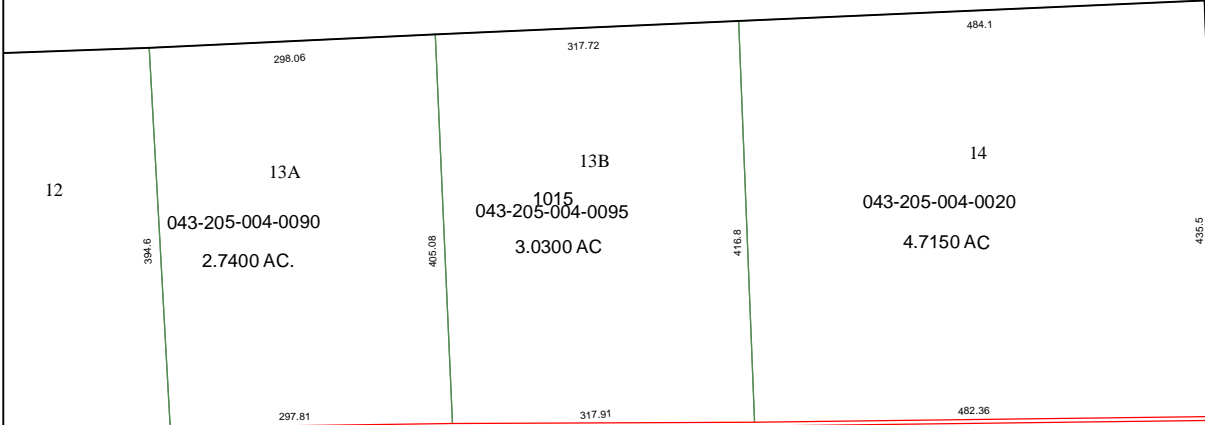
| | | | |
|---|----|----|----|
| 1 | 2 | 3 | 4 |
| 5 | 6 | 7 | 8 |
| 9 | 10 | 11 | 12 |

5260D5

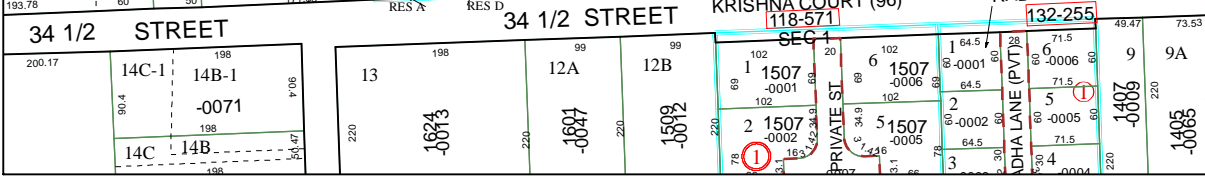
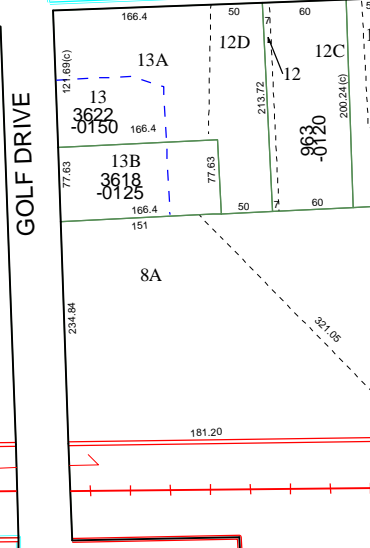
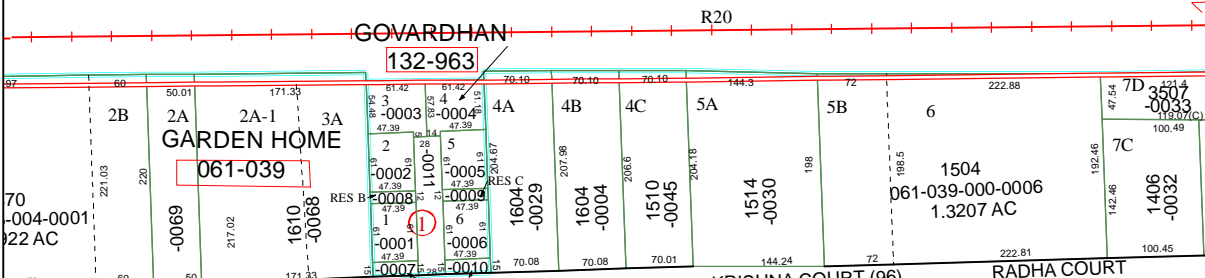


OAK FOREST
073-100
SEC. 2

5260C12



GOLF DRIVE



5259B1

GOLF ROAD

HARE KR

RES A

132-554
3.54