

5260D3

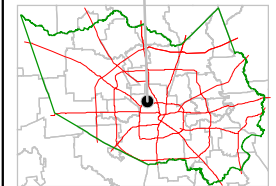
Harris County Appraisal District



0 100 200
PUBLICATION DATE:
8/18/2011

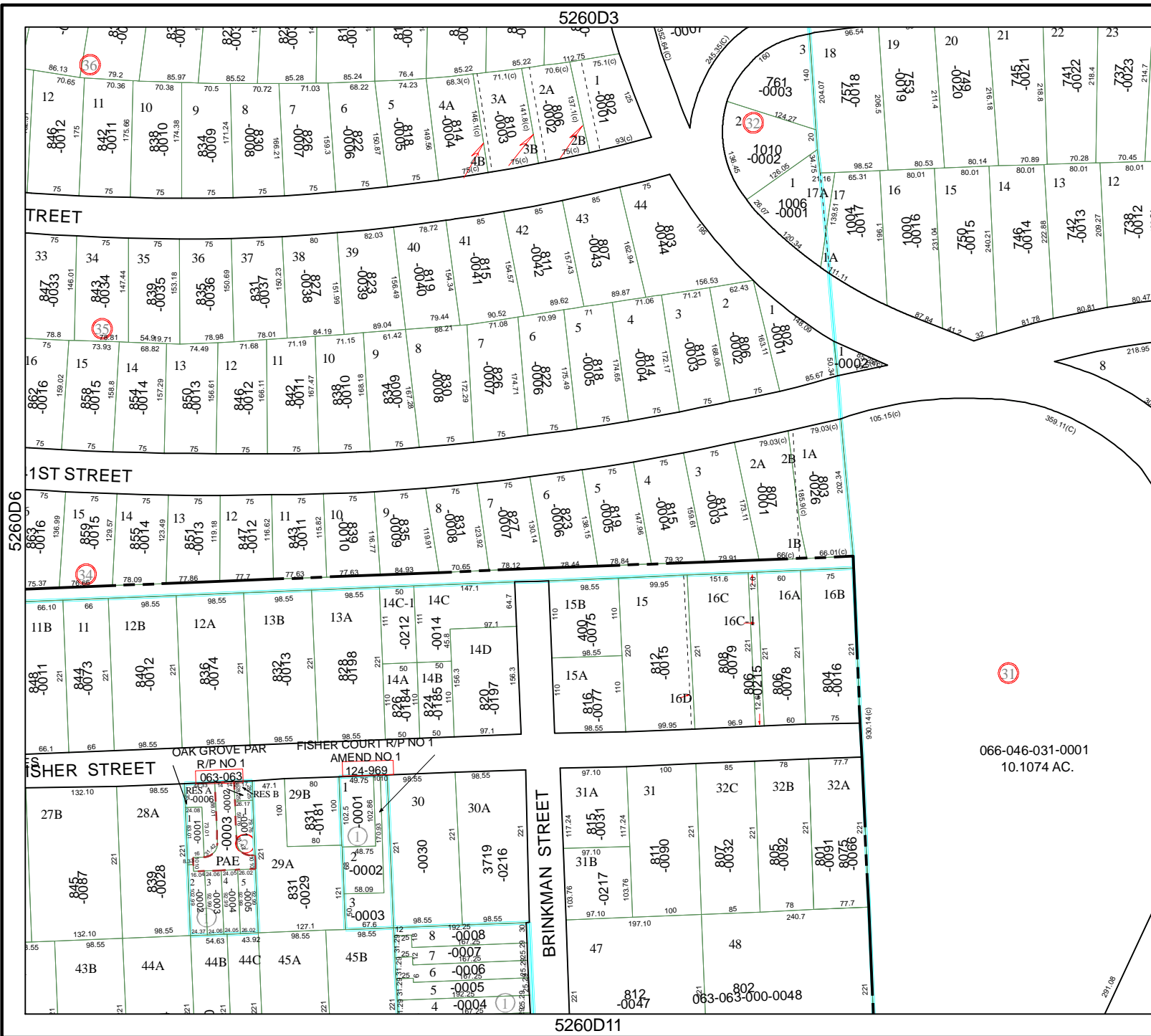
Geospatial or map data maintained by the Harris County Appraisal District is for informational purposes and may not have been prepared for or be suitable for legal, engineering, or surveying purposes. It does not represent an on-the-ground survey and only represents the approximate location of property boundaries.

MAP LOCATION



FACET 5260D

1	2	3	4
5	6	7	8
9	10	11	12



5260D6

5260D8

5260D11

066-046-031-0001
10.1074 AC.

