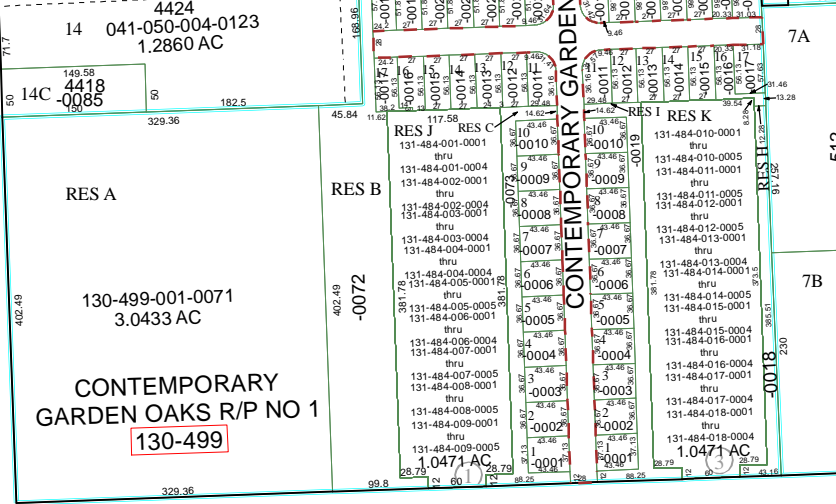
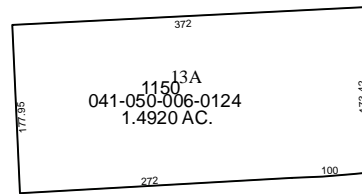


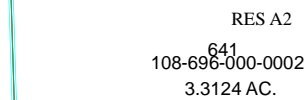
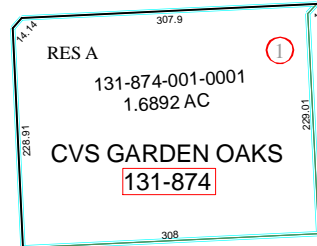
5260B12



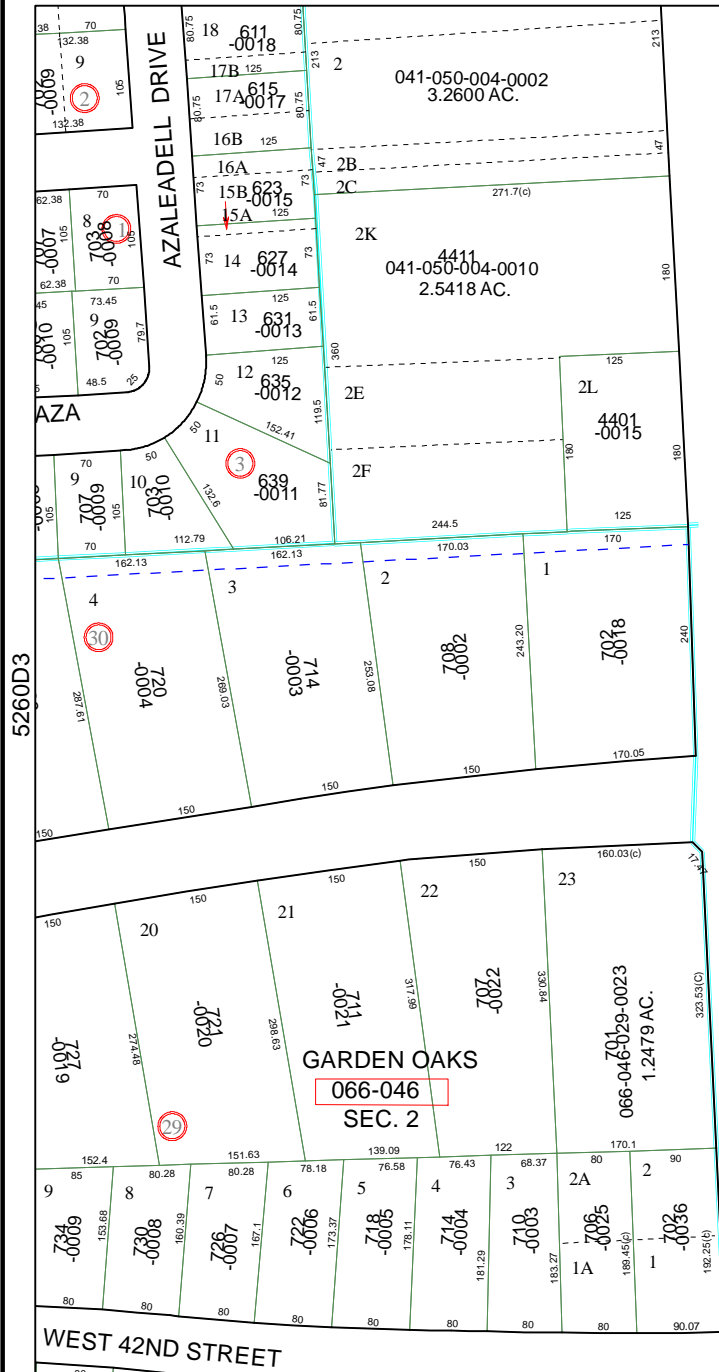
WESTCROSS STREET



WEST CROSSTIMBERS STREET



5260D8



5260D3

WEST 42ND STREET

# Harris County Appraisal District

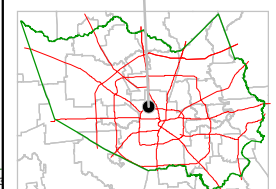


0 100 200  
 PUBLICATION DATE:  
 8/15/2011

Geospatial or map data maintained by the Harris County Appraisal District is for informational purposes and may not have been prepared for or be suitable for legal, engineering, or surveying purposes. It does not represent an on-the-ground survey and only represents the approximate location of property boundaries.



MAP LOCATION



## FACET 5260D

1	2	3	4
5	6	7	8
9	10	11	12

WEST BUSINESS PARK  
108-696

5360C1